

# Infra Guard

Rack Sensor System



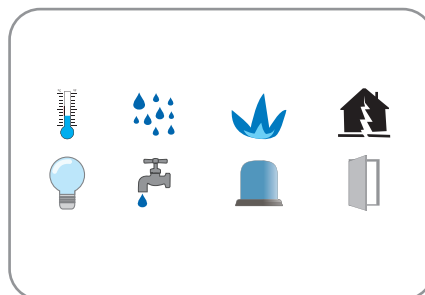
For mission critical data centers, the ability to remotely manage the IT rack environment is vital. Environmental issues to your racks, including high temperature & humidity, smoke, water leakage, physical threats, unauthorized door access, power and cooling inefficiencies can have a significant impact on the performance of the operations.

**InfraGuard** provides an environmental monitoring solution to secure high levels of data center operational stability and flexibility. It also gives a free integrated platform for today's data centers. User can remotely manage the environment and conditions in racks via IP. This can help reducing manpower and travel costs by negating the need for staff to actually be at the rack location.

## Key Benefits

### >>> Variety of Sensors / Peripherals

Getting instant notification of various environmental fluctuations, InfraGuard offers a variety of environmental sensors.



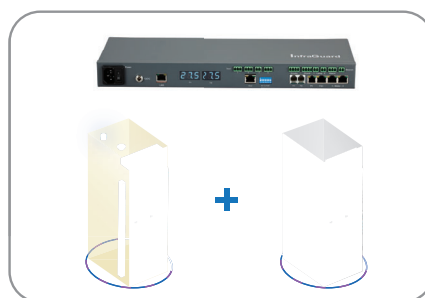
### >>> Integrated PDUs / Fan Units

In order to enhance the functionality, the InfraGuard remote management supports the integration to intelligent Switched / Monitored PDUs and Fan Units. Up to 1920 x kWh PDU and same quantity of Fan Units can be remotely managed by the management software.



### >>> Scalable Flexibility

Multi ports for some critical sensors / peripherals / devices on control box are available. Users can apply "One Box One Rack" in order to achieve the optimum environmental management, or "One Box Two Racks" for cost efficient setup.

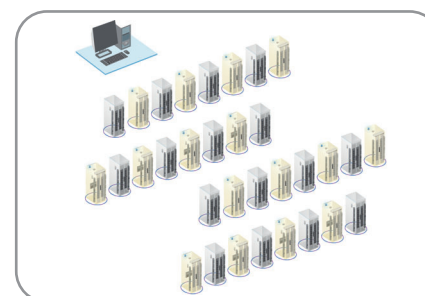


### >>> High Density of Environmental Management

The free management software IGM-03 supports up to 30 x IP.

Up to 16 x InfraGuard control box can be connected by daisy chain and remotely access by one single IP.

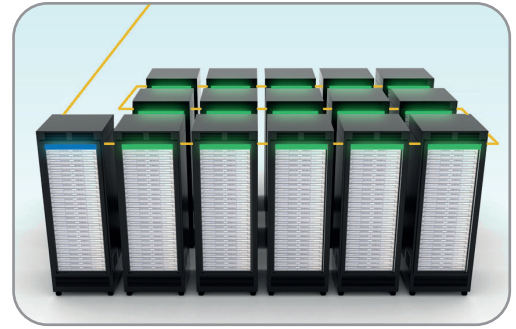
Under "One Box Two Racks" scenario, environmental remote management up to 960 racks can be achieved.



Control box consolidates the integrated sensors and devices.

Up to 16 x Control box can be connected by daisy chain for IP remote access.

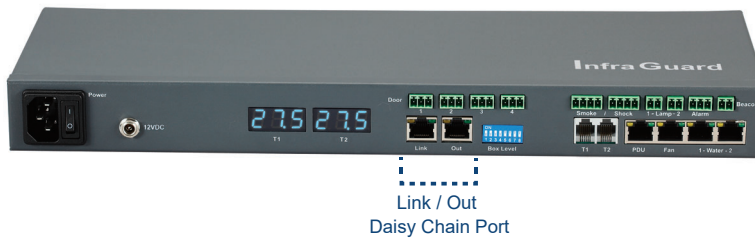
InfraGuard offers two control box models with same integrated sensor and device I/O.



## EC Box 300M - Master IP control box ( 1st Level )



## EC Box 300 - Expansion Serial control box ( 2nd - 16th Level )

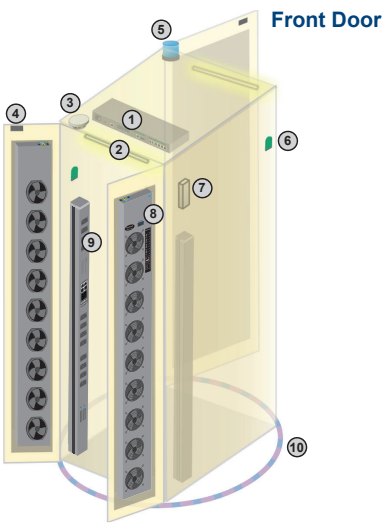


	EC-300M ( Master IP Box )	EC-300 ( Expansion Serial Box )
Daisy Chain	1st Level	2nd - 16th Level via Master IP Box
SNMP	✓	
LAN Port	✓	✗
Daisy Chain Port - LINK	✗	✓
Daisy Chain Port - OUT	✓	✓
Dual Power Input Option	✓	✓
Temperature LED	✓	✓
Temp-Humid Sensor	2	2
Smoke / Shock Sensor	2	2
Water Sensor	2	2
Door Sensor	4	4
LED Light Bar	2	2
LED Flashing Beacon	1	1
Alarm Board	1	1
Integrated PDU	4 ( daisy chain )	4 ( daisy chain )
Integrated Fan Unit	4 ( daisy chain )	4 ( daisy chain )
Product Dimension ( W x D x H )	400 x 135 x 39.7 mm / 15.7 x 5.3 x 1.6 inch	
Packing Dimension ( W x D x H )	557 x 367 x 98 mm / 21.9 x 14.4 x 3.9 inch	
Net Weight	1.06 kgs / 2.3 lbs	
Gross Weight	2.2 kgs / 4.8 lbs	
Power Consumption	Auto-sensing 100 to 240VAC, 50 / 60Hz, Max. 48 Watt	
Operating Temperature	0 to 55°C Degree	
Storage Temperature	-5 to 60°C Degree	
Relative Humidity	5~90%, non-condensing	
Mounting	1U Rackmount	
Safety Regulatory	FCC & CE certified	
Environmental	RoHS3 & Reach compliant	

In One Box - One Rack connection, complete range of integrated sensors and devices can be applied to the rack. Multiple sensors / integrated devices can be applied to one single rack in order to achieve the optimum environmental monitoring conditions.



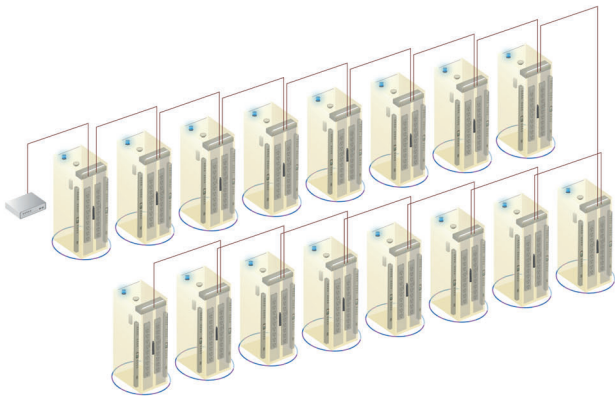
Suggested Sensors / Devices Allocation



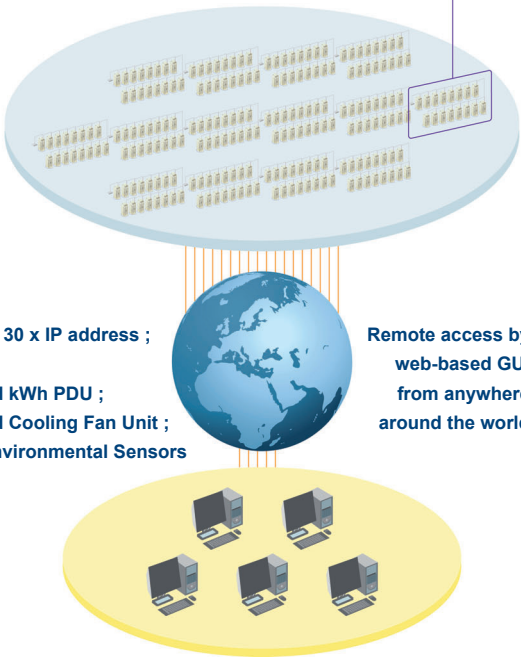
Item	Rack
① EC Box	1
② LED Light Bar	2
③ Smoke Sensor	1
④ Door Sensor	2
⑤ Flashing LED Beacon	1
⑥ Temp. & Humid. Sensor	2
⑦ Shock Sensor	1
⑧ Fan Unit	2
⑨ PDU	2
⑩ Water Sensor	1

Rack Level Connection

- EC 300M as the 1st level Master IP EC box
- The EC box can be cascaded up to 16 levels
- Only 1 x IP for 16 x EC box remote access



- Daisy chain by Cat5/6 cable
- Max. distance between 2 EC box is 20M
- Max. distance in a daisy chain group up to 300M



IGM-03 supports 30 x IP address ;  
480 x EC box ;  
1920 x Integrated kWh PDU ;  
1920 x Integrated Cooling Fan Unit ;  
Thousands of Environmental Sensors

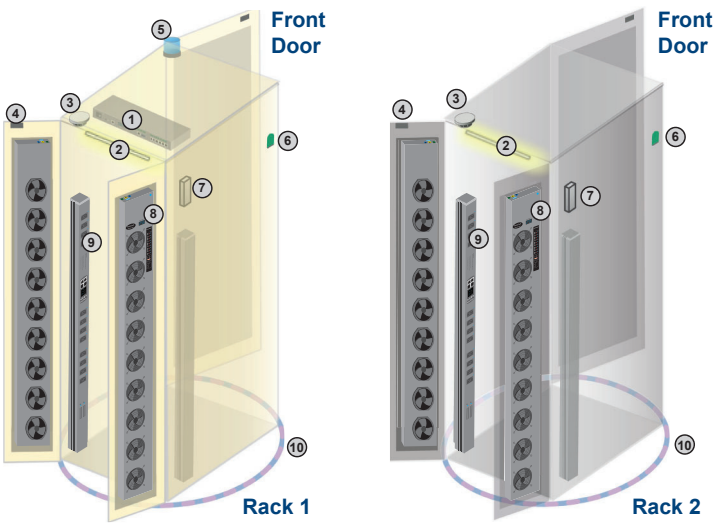
Remote access by  
web-based GUI  
from anywhere  
around the world

5 x concurrent user for remote management

EC Box provides multi-ports for some critical sensors / devices. It means that enables user to share the control box and some duplicated sensors / devices to two racks. A cost efficient environmental management can be achieved.



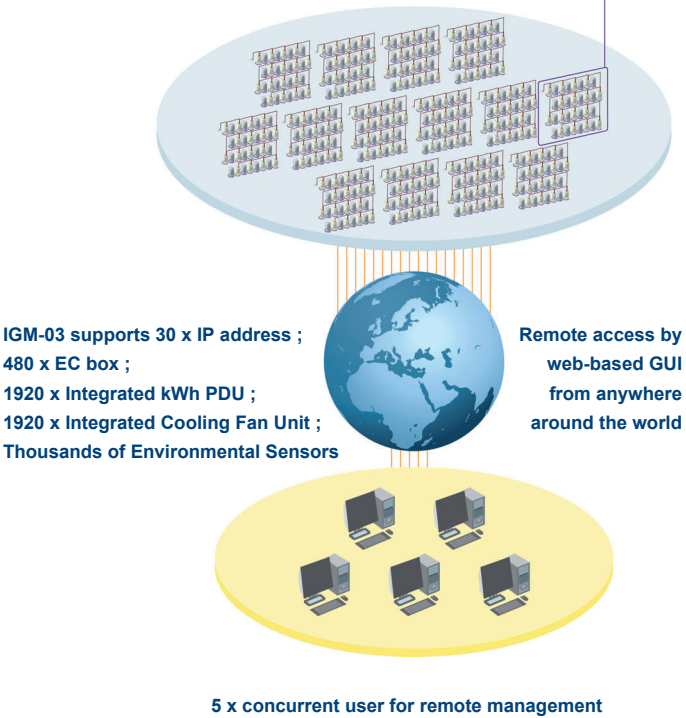
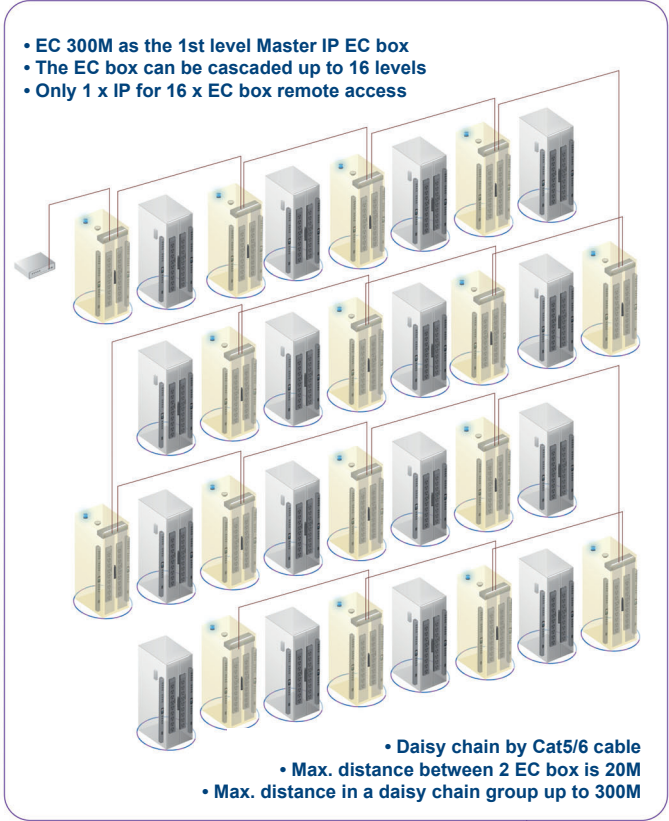
Suggested Sensors / Devices Allocation



Item	Rack 1	Rack 2
① EC Box	1	-
② LED Light Bar	1	1
③ Smoke Sensor	1 *	1 *
④ Door Sensor	2	2
⑤ Flashing LED Beacon	1	-
⑥ Temp. & Humid. Sensor	1	1
⑦ Shock Sensor	1 *	1 *
⑧ Fan Unit	2	2
⑨ PDU	2	2
⑩ Water Sensor	1	1

\* either smoke sensor or shock sensor

Rack Level Connection





To maintain optimum operational conditions in data centers, getting instant notification of various environmental fluctuations is vital.

**InfraGuard** offers a wide range of sensors for complete environmental monitoring, including temperature, humidity, smoke, shock and water leakage.

Peripherals such as LED light bars and flashing LED beacons, are designed for use with the sensors for a comprehensive local environmental monitoring solution.



## Temp. + Humid. Sensor



- One sensor for temperature & humidity
- Low profile and light weight design with a magnetic base for easy affixing to rack

**Part no. :**

**IG-TH01-2M** with 2M cord

**IG-TH01-4M** with 4M cord

## Temp. Sensor



- Detection for temperature
- Low profile and light weight design with a magnetic base for easy affixing to rack

**Part no. :**

**IG-T01-2M** with 2M cord

**IG-T01-4M** with 4M cord

## Water Sensor



- Fluid leakage detection
- 5M rope round the rack bottom to detect any fluid flowing to the rack area
- IP65 cable joint connectors provided

**Part no. :**

**IG-W01-3M** with 3M cord

## Smoke Sensor



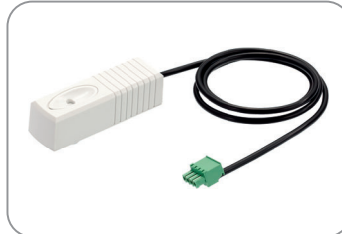
- Safely operated smoke detection

**Part no. :**

**IG-S01-1M** with 1M cord

**IG-S01-3M** with 3M cord

## Shock Sensor



- Alert the physical vibration on the rack

**Part no. :**

**IG-V01-1M** with 1M cord

**IG-V01-3M** with 3M cord

## LED Beacon



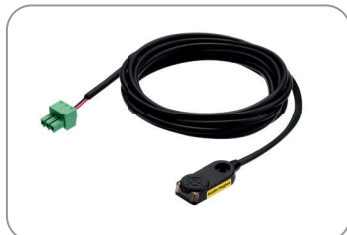
- Highly visible for alerting user to alarm status

**Part no. :**

**IG-FB03-1M** with 1M cord

**IG-FB03-3M** with 3M cord

## Inductive Door Sensor



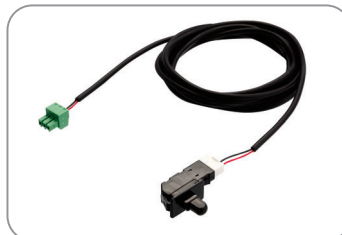
- Light weight, mini size & adhesive
- No custom cutting required on doors
- Easy for existing rack retrofit or integration to new rack

**Part no. :**

**IG-DSI-2M** with 2M cord

**IG-DSI-4M** with 4M cord

## Mechanical Door Sensor



- Low cost
- Precise
- Cost efficient integration to new rack
- Custom cutting required on door

**Part no. :**

**IG-DSW-2M** with 2M cord

**IG-DSW-4M** with 4M cord

## LED Light Bar



- Auto ON / OFF by door sensor detection
- Manual ON / OFF by software remote
- Magnetic base for easy affixing to rack
- Dimension ( W x D x H ) : 20 x 300 x 12 mm

**Part no. :**

**CLB-IX-002** with 2M cord

**CLB-IX-003** with 3M cord

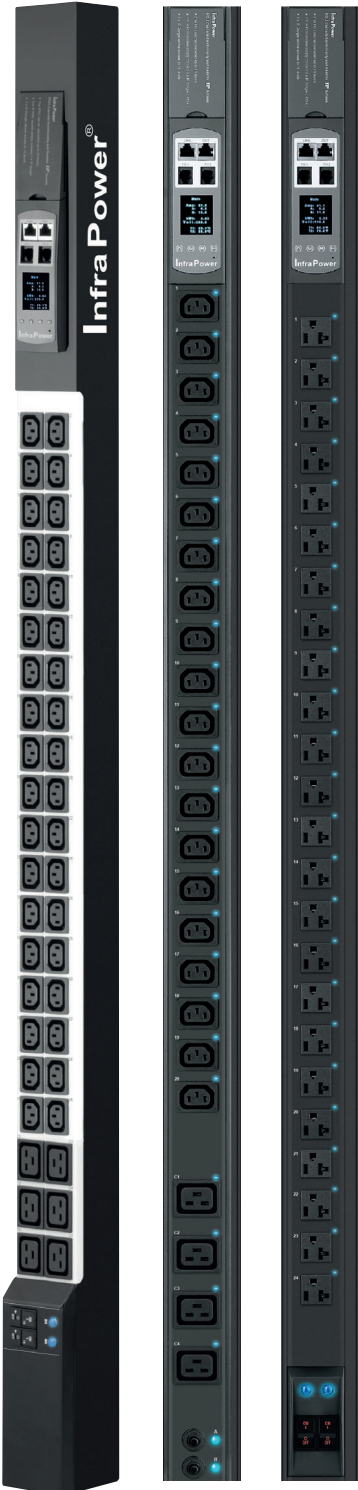
With today's increasing demand for power management solution, a complete suite of rack PDU models is required specifically to help data center IT managers meet their rapidly escalating power requirements.

**InfraPower®** intelligent PDU can be integrated to provide a power management solution from PDU Level to Outlet Level kWh monitoring. Switched models are also available for remote outlet switching on / off. Our PDUs are also offered in many sizes and configurations depending on voltage, current, outlet number and type of connections.



cUL certified for specific configurations

[Details](#)



### W Intelligent PDU series

	Monitored		Switched	
	W	Wi	WS	WSi
Outlet AMP - kWh Measurement		✓		✓
Outlet Switch ON / OFF			✓	✓
Hot-Swap Meter	✓	✓	✓	✓
1.8" Color LCD	✓	✓	✓	✓
Circuit Amp - kWh Measurement	✓	✓	✓	✓
Temp-Humid Sensor port x 2	✓	✓	✓	✓
Daisy-chained PDU x 4 via EC Box	✓	✓	✓	✓
SNMP Capability v1 / v2	✓	✓	✓	✓
Free Management Software	✓	✓	✓	✓
Lockable IEC Outlet Model	✓	✓	✓	✓
Individually Fused Outlet Model	✓	✓	✓	✓
63A Model ( only for 230V PDU )	✓	✓	✓	✓
Local Meter	✓	✓	✓	✓
Tool-less Mounting for Vertical PDU	✓	✓	✓	✓
0U / 1U / 2U Form Factors	✓	✓	✓	✓
Voltage 230V / 208V / 110V	✓	✓	✓	✓
Hydraulic Magnetic Circuit Breaker	✓	✓	✓	✓
Operating Temperature Range -5°C to 60°C	✓	✓	✓	✓
Outlet Types : IEC C13	✓	✓	✓	✓
IEC C19	✓	✓	✓	✓
IEC C13 + C19	✓	✓	✓	✓
IEC Lockable	✓	✓	✓	✓
IEC Individually Fused	✓	✓	✓	✓
NEMA	✓	✓	✓	✓
UK / UK + IEC	✓	✓	✓	✓
SCH / SCH + IEC	✓	✓	✓	✓



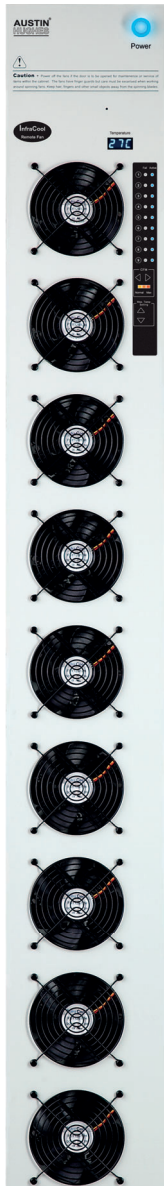
If intelligent PDU is not required, you may select Basic or Metered series.

[Details](#)

<http://www.austin-hughes.com/infrapower/single-phase/pdu/metered-pdu>

The biggest challenge in today's data center is thermal management. Cooling the equipment in an enclosed rack has always been important.

**InfraCool®** intelligent cooling fan units can be integrated to have both local & remote management capabilities. Front panel LED and buttons allow the local monitoring and individual fan kit switch on / off. Moreover, fan speed can be adjusted automatically according to the temperature detected by the sensor. It provides adequate airflow and minimizes the operation cost for data center energy consumption.


[Details](#)


Intelligent Fan Unit	Door Mount Fan Panel	1U Rackmount Fan Tray	
Part No.	RF-33.9	RF-1.6	RF-1.9
Fan Number	9	6	9
Total CFM	972	648	972
Airflow	<div> <p><i>Front Door</i> Cool Air In</p> <p><i>Rear Door</i> Hot Air Out</p> </div>		
Daisy-chained Fan x 2 via EC Box	✓	✓	
Temp. Port	✓	✓	
Temp. Sensor	✓	✓	
Automatic Fan Speed Control	✓	✓	
Control Panel :	✓	✓	
• Individual Fan On / Off	✓	✓	
• Alarm Temp. Setting	✓	✓	
• Unit CFM ( fan speed ) Setting	✓	✓	
• Temperature LED	✓	✓	
• Fan Status LED	✓	✓	
• CFM Status LED	✓	✓	

## Rackmount Fan Trays



## Auto Fan Speed Control



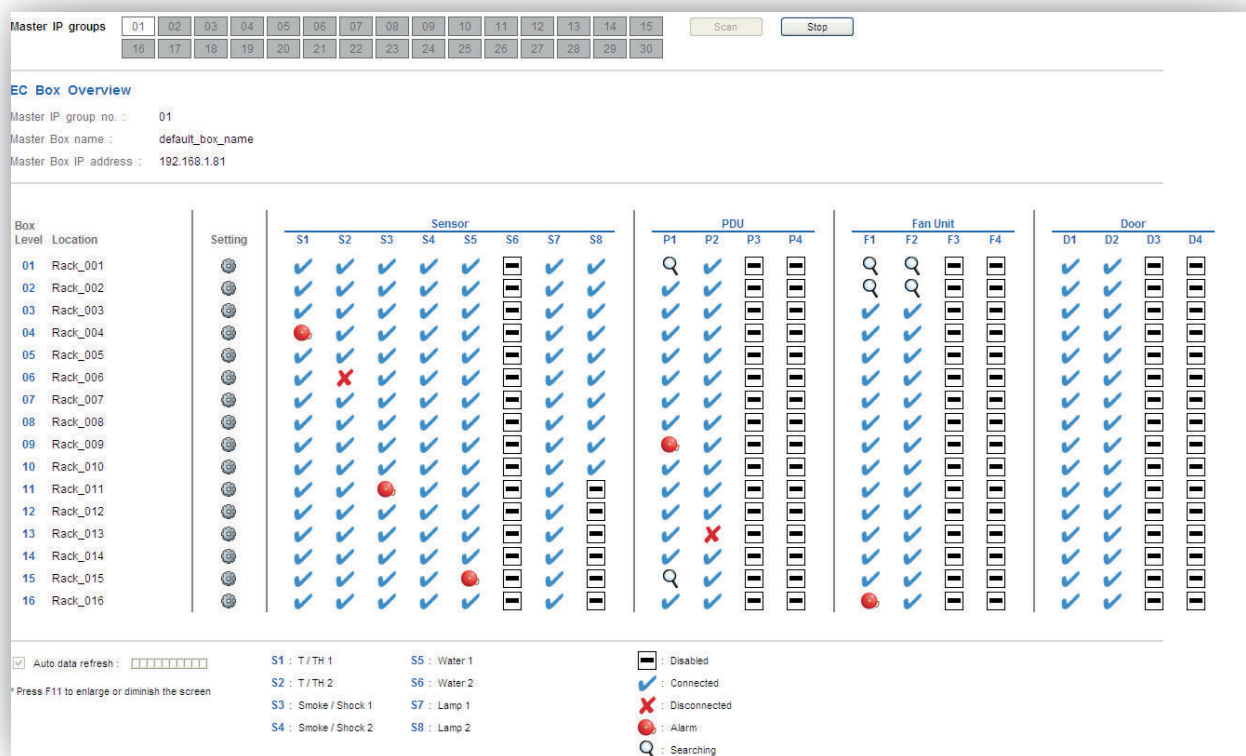
## Temp. Sensor Port x 1





**InfraGuard Manager IGM-03** is a FREE environmental sensor management software to monitor up to 30 Master IP Groups remotely ( max. 16 EC box levels in each Master IP Group ), total 480 EC boxes. Each EC box can connect a variety of sensors to provide an environmental monitoring solution to secure high levels of data center operational stability and flexibility.

To enhance the functionality, up to 1920 x kWh PDU / Remote Fan Unit can be monitored through **IGM-03** GUI as well. 5 concurrent user access are bundled for achieving the demand of multi-user / multi-tasking in nowadays' time-sharing data center operation.

[Details](#)


Features	IGM-03
<b>Capacity</b>	
Master IP Group ( just 1 for 16 EC box levels )	30
EC Box Number	480
Concurrent User	5
<b>Device Overview</b>	
Status of Sensor, PDU, Fan Unit & Door	✓
Device Setting / Audio and Visual Output Setting	✓
<b>Sensor Peripheral</b>	
Status Monitoring	✓
Location of Sensor / Peripheral	✓
Temp-Humid Alarm Setting / Rising Alert Threshold Setting	✓
<b>PDU</b>	
Energy Consumption kWh / Amp Monitoring	✓
Outlet Level Measurement	✓
PDU Outlet Schedule	✓
Outlet Switch ON / OFF	✓
Amp Alarm Threshold Setting	✓
Amp Rising / Low Alert Threshold Setting	✓
Temp-Humid / Circuit Breaker Monitoring	✓
<b>Fan Unit</b>	
CFM & Temp. Monitoring	✓
Unit CFM ( fan speed ) Setting	✓
Auto CFM Control Setting	✓
Individual Fan Kit ON / OFF	✓
Fan Unit ON / OFF	✓
<b>Event Log / Report</b>	
System & Device Event	✓
Device Log / Reporting	✓

## Sensors

- >> Sensor Status
- >> Sensor Setting
- >> Door Status
- >> Door Setting

**Sensor Status**  
Master IP group No.: 01

Page: 1 | 2

Box Level	Location	Setting	Location	Temp. °C	Humid. %	Location	Smoke / Shock Status	Location	Water Status	Location	Lamp Status
01	Rack_001	⊕	S1 Front bottom	24.9	55	S3 Rear inside top	Connected	S5 Bottom surrounded	Connected	S7 Fronttop	OFF
02	Rack_002	⊕	S2 Rear top	22.1	60	S4 Upper inside	Connected	S6 -	-	S8 Rear top	OFF
03	Rack_003	⊕	S1 Front bottom	24.0	57	S3 Rear inside top	Connected	S5 Bottom surrounded	Connected	S7 Fronttop	OFF
04	Rack_004	⊕	S2 Rear top	25.0	55	S4 Upper inside	Connected	S6 -	-	S8 Rear top	OFF
05	Rack_005	⊕	S1 Front bottom	24.1	57	S3 Rear inside top	Connected	S5 Bottom surrounded	Connected	S7 Fronttop	ON
06	Rack_006	⊕	S2 Rear top	23.5	59	S4 Upper inside	Connected	S6 -	-	S8 Rear top	OFF
07	Rack_007	⊕	S1 Front bottom	26.3	50	S3 Rear inside top	Connected	S5 Bottom surrounded	Connected	S7 Fronttop	OFF
08	Rack_008	⊕	S2 Rear top	23.1	63	S4 Upper inside	Connected	S6 -	-	S8 Rear top	OFF
09	Rack_009	⊕	S1 Front bottom	23.8	58	S3 Rear inside top	Connected	S5 Bottom surrounded	Connected	S7 Fronttop	ON
10	Rack_010	⊕	S2 Rear top	25.2	53	S4 Upper inside	Connected	S6 -	-	S8 Rear top	ON
11	Rack_011	⊕	S1 Front bottom	23.8	58	S3 Rear inside top	Connected	S5 Bottom surrounded	Connected	S7 Fronttop	OFF
12	Rack_012	⊕	S2 Rear top	23.1	61	S4 Upper inside	Connected	S6 -	-	S8 Rear top	ON
13	Rack_013	⊕	S1 Front bottom	23.1	60	S3 Rear inside top	Connected	S5 Bottom surrounded	Connected	S7 Fronttop	OFF
14	Rack_014	⊕	S2 Rear top	22.9	61	S4 Upper inside	Connected	S6 -	-	S8 Rear top	OFF
15	Rack_015	⊕	S1 Front bottom	23.9	57	S3 Rear inside top	Connected	S5 Bottom surrounded	Connected	S7 Fronttop	ON
16	Rack_016	⊕	S2 Rear top	23.2	61	S4 Upper inside	Connected	S6 -	-	S8 Rear top	OFF

☒ Auto data refresh:

\* Press F11 to enlarge or diminish the screen

## PDU

- >> Status
- >> PDU / Temp + Humid Setting
- >> Outlet Schedule
- >> PDU Log
- >> Outlet kWh Log
- >> Outlet Switch ON / OFF

**PDU Setting**  
Box level: 01  
Status: Connected  
Name: Rack\_001  
Location: Rack\_001

PDU: 01 V24C15-32A-VIS  
Status: Connected  
Name: PDU\_default\_name  
Location: PDU\_default\_loc

PDU kWh: 0.00  
PDU load amp: 0.0  
Power factor: 0.07  
Apparent power (kVA): 0.00

TH 01 { °C / % }  
Temp: 22.5 Humid: 62.9

TH 02 { °C / % }  
Temp: - Humid: -

**Circuit A** Max amp: 16.0 Alarm amp: 13.0  
Load amp: 0.0 Rising alert amp: 0.0  
Low alert amp: 0.0

Peak amp: 0.0 2013/03/15 00:00:00  
kWh: 0.00 2013/03/15 00:00:00

**Circuit B** Max amp: 16.0 Alarm amp: 13.0  
Load amp: 0.0 Rising alert amp: 0.0  
Low alert amp: 0.0

Peak amp: 0.0 2013/03/15 00:00:00  
kWh: 0.00 2013/03/15 00:00:00

Outlet	Name	Amp	kWh	Status	Switch
01	outlet_name_01	0.0 / 10.0 / 0.0 / 0.0	0.00	ON	OFF
02	outlet_name_02	0.0 / 10.0 / 0.0 / 0.0	0.00	OFF	ON
03	outlet_name_03	0.0 / 10.0 / 0.0 / 0.0	0.00	OFF	ON
04	outlet_name_04	0.0 / 10.0 / 0.0 / 0.0	0.00	OFF	ON
05	outlet_name_05	0.0 / 10.0 / 0.0 / 0.0	0.00	OFF	ON
06	outlet_name_06	0.0 / 10.0 / 0.0 / 0.0	0.00	OFF	ON
07	outlet_name_07	0.0 / 10.0 / 0.0 / 0.0	0.00	OFF	ON
08	outlet_name_08	0.0 / 10.0 / 0.0 / 0.0	0.00	OFF	ON
09	outlet_name_09	0.0 / 10.0 / 0.0 / 0.0	0.00	OFF	ON
10	outlet_name_10	0.0 / 10.0 / 0.0 / 0.0	0.00	OFF	ON
11	outlet_name_11	0.0 / 10.0 / 0.0 / 0.0	0.00	OFF	ON
12	outlet_name_12	0.0 / 10.0 / 0.0 / 0.0	0.00	OFF	ON
13	outlet_name_13	0.0 / 10.0 / 0.0 / 0.0	0.00	OFF	ON
14	outlet_name_14	0.0 / 10.0 / 0.0 / 0.0	0.00	OFF	ON
15	outlet_name_15	0.0 / 10.0 / 0.0 / 0.0	0.00	OFF	ON
16	outlet_name_16	0.0 / 10.0 / 0.0 / 0.0	0.00	OFF	ON
17	outlet_name_17	0.0 / 10.0 / 0.0 / 0.0	0.00	OFF	ON
18	outlet_name_18	0.0 / 10.0 / 0.0 / 0.0	0.00	OFF	ON
19	outlet_name_19	0.0 / 10.0 / 0.0 / 0.0	0.00	OFF	ON
20	outlet_name_20	0.0 / 10.0 / 0.0 / 0.0	0.00	OFF	ON
21	outlet_name_21	0.0 / 10.0 / 0.0 / 0.0	0.00	OFF	ON
22	outlet_name_22	0.0 / 10.0 / 0.0 / 0.0	0.00	OFF	ON
23	outlet_name_23	0.0 / 10.0 / 0.0 / 0.0	0.00	OFF	ON
24	outlet_name_24	0.0 / 10.0 / 0.0 / 0.0	0.00	OFF	ON

☒ Auto data refresh:

\* Press F11 to enlarge or diminish the screen

## Fan

- >> Status
- >> Fan Unit Setting
- >> Temp. Setting

**Fan Unit Setting**  
Box level: 02  
Status: Connected  
Name: Rack\_002  
Location: Rack\_002

Fan unit: 01 RF-13.1U Fan Tray  
Status: Connected  
Name: FanName03  
Location: FanLocation03

Unit switch:

Unit CFM:

Temp. Sensor (°C)  
Temp: -

Fan Status Switch

01 OFF

02 OFF

03 OFF

Front

☒ Auto data refresh:

\* Press F11 to enlarge or diminish the screen

## Control Box

<b>EC-300M</b>	Master IP control box - LAN port x 1 for remote over IP - Built-in SNMP - Daisy chain : 1st level
<b>EC-300</b>	Expansion Serial control box - Daisy chain : 2nd - 16th level
<b>ECP-4A</b>	Dual power input option, 4A@12V

## Management Software

<b>IGM-03</b>	InfraGuard management software - Max. 30 master IP groups ( just 1 for 16 EC box levels ) - Max. 480 EC boxes - Max. 5 concurrent users - Package including CD key  * Free of charge
---------------	--

## Sensor / Peripheral

<b>IG-TH01-2M</b>	Temp. + Humid. sensor	w/ 2m cord
<b>IG-TH01-4M</b>	Temp. + Humid. sensor	w/ 4m cord
<b>IG-T01-2M</b>	Temp. sensor	w/ 2m cord
<b>IG-T01-4M</b>	Temp. sensor	w/ 4m cord
<b>IG-S01-1M</b>	Smoke sensor	w/ 1m cord
<b>IG-S01-3M</b>	Smoke sensor	w/ 3m cord
<b>IG-V01-1M</b>	Shock sensor	w/ 1m cord
<b>IG-V01-3M</b>	Shock sensor	w/ 3m cord
<b>IG-W01-3M</b>	Water sensor	w/ 3m Cat6 cable
<b>IG-DSI-2M</b>	Inductive door sensor, pair	w/ 2m cord
<b>IG-DSI-4M</b>	Inductive door sensor, pair	w/ 4m cord
<b>IG-DSW-2M</b>	Mechanical door sensor, pair	w/ 2m cord
<b>IG-DSW-4M</b>	Mechanical door sensor, pair	w/ 4m cord
<b>CLB-IX-002</b>	LED light bar	w/ 2m cord
<b>CLB-IX-003</b>	LED light bar	w/ 3m cord
<b>IG-FB03-1M</b>	LED beacon	w/ 1m cord
<b>IG-FB03-3M</b>	LED beacon	w/ 3m cord

## PDU

<b>InfraPower Intelligent PDU :</b>	
<b>WSi</b>	kWh switched PDU, outlet measurement
<b>WS</b>	kWh switched PDU
<b>W</b>	kWh monitored PDU

\* All PDUs above come with Temp. + Humid. sensor port x 2

<b>Outlet :</b>	<b>Voltage :</b>
US Nema	100-120VAC
IEC C13 / C19	200-250VAC / 208VAC
UK BS1363 + IEC	200-250VAC
GR Schuko + IEC	200-250VAC
FR French + IEC	200-250VAC

## Fan Unit

<b>InfraCool Intelligent Expansion Serial Fan :</b>	
<b>RF-33.9</b>	33U Intelligent door mount fan panel w/ 9 fans
<b>RF-1.6</b>	1U Intelligent rackmount remote fan tray w/ 6 fans
<b>RF-1.9</b>	1U Intelligent rackmount remote fan tray w/ 9 fans

\* All Expansion Serial fan above come with Temp. sensor x 1

For details, please refer to  
<http://www.austin-hughes.com/infraGuard>



Founded in 1995, Austin Hughes is a design and manufacturing group that offers a broad range of solutions based around 19-inch rack mount technology. These solutions include UltraRack IT server rack, InfraRack smart rack, InfraPower rack PDU & ATS, InfraCool rack cooling systems, InfraGuard rack sensors and peripherals, InfraSolution rack access control and CyberView rack LCD KVM switches. We also offer industrial & commercial IT products, such as UltraView professional displays and Mini IP solutions.

Austin Hughes has ISO14001 and ISO9001 approved design, manufacturing, assembly, and test facilities. We support a worldwide customer base through our global locations.



As a leading global IT manufacturer, Austin Hughes provides TAA-compliant data center solutions, manufactures and assembles products in strategic TAA-certified locations.



Visit our Website ▶



**Americas**

**Austin Hughes Solutions Inc.**  
21375 Cabot Blvd  
Hayward, CA 94545  
United States

[inquiry-americas@austin-hughes.com](mailto:inquiry-americas@austin-hughes.com)

**EMEA**

**Austin Hughes Europe Ltd.**  
Unit 1, Chancery Gate Business Centre  
Manor House Avenue  
Southampton, SO15 0AE  
United Kingdom

[inquiry-emea@austin-hughes.com](mailto:inquiry-emea@austin-hughes.com)

**APAC**

**Austin Hughes Electronics Ltd.**  
Unit 3608-12, Cable TV Tower  
9 Hoi Shing Road, Tsuen Wan  
Hong Kong

[inquiry-apac@austin-hughes.com](mailto:inquiry-apac@austin-hughes.com)

**ASEAN**

**Austin Hughes Pte. Ltd.**  
164 Gul Circle  
#01-07 JTC Space@Gul  
Singapore 629621

[inquiry-asean@austin-hughes.com](mailto:inquiry-asean@austin-hughes.com)

**Austin Hughes** has an extensive distribution network,  
including the Americas, EMEA, APAC & ASEAN  
Contact your nearest sales office for details of local representation

Please ask for details of other products from Austin Hughes. Every effort has been made to ensure that the information contained herein is correct. There is a possibility that the image(s) shown may not be exactly the same as the final product. The company reserves the right to modify product specifications without prior notice and assumes no responsibility for any error which may appear in this publication.

All brand names, logo and registered trademarks are properties of their respective owners.  
Copyright 2024 Austin Hughes Electronics Ltd. All rights reserved.

**Distributed by:**

**Distributor by country on application**

CA-InfraGuard-Q324V1