

Dual Feed Intelligent PDU

Single Phase - 230V / 208V / 110V

- >> Two PDUs by One Meter & Chassis
- >> 2.8" Color LCD Meter w/ Touchscreen
- >> Facilitate Rack Cabling
- >> Simplify Dual PDU Setup
- >> Save Your Rack Space
- >> Reduce IP Address Cost
- >> Increase Management Efficiency

- W** PDU - Circuit Monitoring
- Wi** PDU - Outlet & Circuit Monitoring
- WS** PDU - Outlet Switching + Circuit Monitoring
- WSi** PDU - Outlet Switching + Outlet & Circuit Monitoring

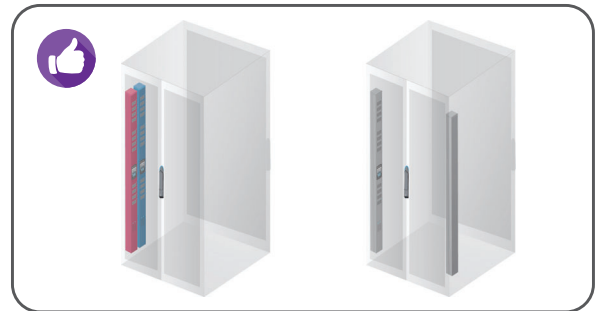


Why Dual Feed PDU ?

>>> 1 Chassis 2 PDUs

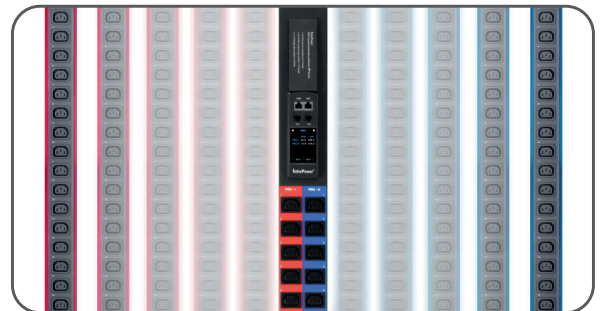
Traditionally, data center racks are equipped with two PDUs positioned in the rear left and right side respectively.

InfraPower W series Dual Feed PDU is designed to house two PDUs in a single chassis which only requires one side installation. Hence, this facilitates PDU setup and saves spacing. Users also benefit from the Red + Blue colored layout to distinguish the primary & secondary PDUs.



>>> 1 Meter 2 PDUs

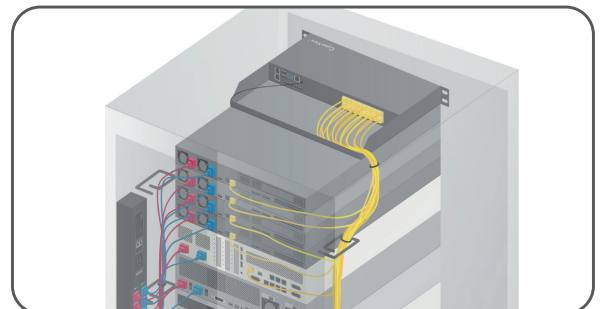
Creatively, Austin Hughes develops **1 Meter 2 PDUs** solution - InfraPower W series Dual Feed PDU. The sophisticated LCD touchscreen meter is integrated in a single chassis but for both primary and secondary PDUs. The meter not only allows local monitoring for 2 PDUs, but also supports up to 16 cascade levels. By the patent IP dongle, only one IP is required to access up to 32 PDUs in a single cascade group.



>>> Facilitate Cable Management

It becomes one of the cable management standard to separate power and data cables inside a rack. On the one hand, it minimizes the erratic data transfer as well as EMI. On the other hand, it distinguishes the power & data cabling.

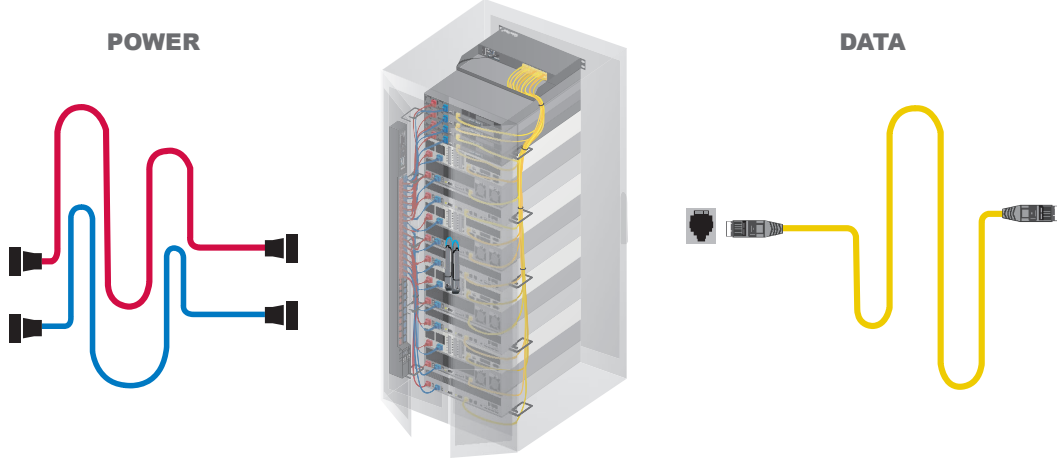
By InfraPower Dual Feed PDU, power & data cable separation is easily achieved. In addition, space-saving design and Red + Blue distinguishable layout contribute to a well-organized rack cabling.





One Side Orientation for Power Cabling

Power and data cables should be kept apart in order to avoid interference. It is a typical practice to isolate power cabling to one side of the rack, whether it is for primary or secondary power connection. InfraPower Dual Feed PDU series offers an efficient, convenient & space saving solution - Primary & Secondary PDUs are integrated to one unit with dual power feed.



Model Coverage

1-Phase Intelligent Dual Feed PDU Series	Monitored		Switched	
	W	Wi	WS	WSi
Outlet Level Measurement Over IP		✓		✓
Outlet Switch ON / OFF			✓	✓
Circuit Amp - kWh Measurement	✓	✓	✓	✓
Hot-Swappable Meter	✓	✓	✓	✓
Billing Grade Meter Accuracy Within +/- 1%	✓	✓	✓	✓
2.8" Color Touch LCD	✓	✓	✓	✓
32 / 16 Daisy Chained PDUs Supported on 1 IP	✓	✓	✓	✓
Free Management Software	✓	✓	✓	✓
SNMP Capability v2 / v3	✓	✓	✓	✓
Temp., Humidity, Smoke & Door Sensors	✓	✓	✓	✓
RCM (Residual Current Monitoring Module)	✓	✓	✓	✓
Door Mount PDU Panel w/ 4.3" Color LCD	✓	✓	✓	✓
Wifi Kit (Supports Max. 32 Daisy Chained PDUs)	✓	✓	✓	✓
Local Meter	✓	✓	✓	✓
Resettable Fuse / Hydraulic MCB	✓	✓	✓	✓
ELCR / Surge Protector / EMI Filter	✓	✓	✓	✓
Tool-less Mounting	✓	✓	✓	✓
0U Form Factors	✓	✓	✓	✓
Operating Temperature -5 to 60°C	✓	✓	✓	✓
Voltage 230V / 208V / 110V	✓	✓	✓	✓
Outlet Types : US NEMA / C13 / C19	✓	✓	✓	✓
Lockable IEC	✓	✓	✓	✓
Fused IEC	✓	✓	✓	✓

* Customization available on request

IP Dongle



- Hot pluggable
- Allows IP remote access
- Up to 16 PDUs in daisy chain
- SNMP capability v2 / v3

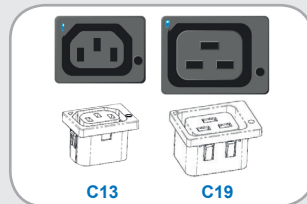
Dual Lan IP Dongle



- Allows IP remote access
- Up to 32 PDUs in daisy chain
- SNMP capability v2 / v3
- Supports 10/100 & gigabit LAN ethernet

[Details](#)

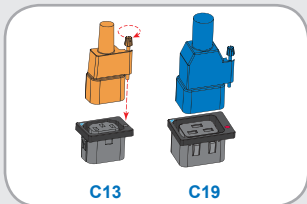
Lockable IEC Outlet



- Low cost
- Easy to lock
- Secure

[Details](#)

Lockable IEC Cable



- Connect to InfraPower lockable IEC outlets
- Black / Grey / Red / Blue / Orange / Green

C14 - C13: 0.5M / 1M / 2M
C20 - C19: 0.5M / 1M



W Meter - Advanced & Sophisticated

W series PDUs are supplied with a W meter that allows local metering, the ports for PDU daisy chain as well as external sensor / peripheral connection.

- PDUs can be cascaded in a single daisy chain.
- Simply connect 1 x IP Dongle to access up to 32 / 16 PDUs to save IP address.
- Built-in buzzer will sound when circuit or bank Amp over alarm setting.
- Field replaceable design allows meter replacement without PDU power interruption.



- **Cascade port**
 - Up to 32 / 16 PDU Levels
- **Sensor port x 2**
 - Temp. Sensor
 - Temp. + Humid. Sensor
 - External PDU display
- **2.8" color LCD**
 - Featured w/ Touchscreen

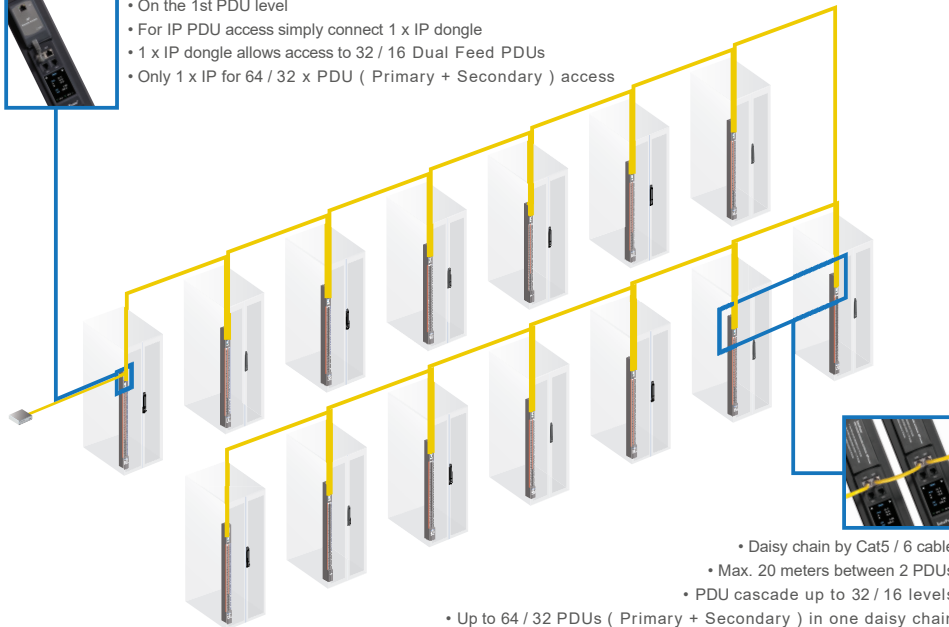
Ultra Density PDU Management

W Series Dual Feed PDU combines highly efficient hardware connection with software remote management for Ultra High Density PDU Remote Management.

IP Dongle - Save the IP Address Cost



- On the 1st PDU level
- For IP PDU access simply connect 1 x IP dongle
- 1 x IP dongle allows access to 32 / 16 Dual Feed PDUs
- Only 1 x IP for 64 / 32 x PDU (Primary + Secondary) access



- Daisy chain by Cat5 / 6 cable
- Max. 20 meters between 2 PDUs
- PDU cascade up to 32 / 16 levels

• Up to 64 / 32 PDUs (Primary + Secondary) in one daisy chain



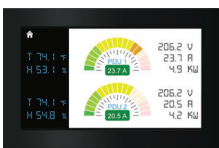
PDU Management Software

- Free & powerful PDU software - IPM-04
- Max. 50 IP groups
- Max. 1600 / 800 PDUs
- Max. 5 concurrent users

3rd Party DCIM (via SNMP)

- DCIM is achievable via IP dongle and daisy chain

Door Mount PDU Panel



- 4.3" color LCD touchscreen
- Connect two PDU meters to display power, sensor status
- Enhance information display
- Plug & play

Details

Temp. & Humid. Sensor

IG-TH-01-2M

Temp. & Humid.



IG-T-01-2M

Temp. only



- Plug & Play
- With 2M or 4M cord
- Magnetic base for easy affixing
- Pair of sensors can be connected to an intelligent PDU meter

Smoke Sensor

IP-S01-1M / 3M



- With 1M or 3M cord
- When smoke alarm triggers, sensor red LED lights on with beep sound continuously

Door Sensor

IP-DSW-2M/4M



- With 2M or 4M cord
- Cost efficient integration into rack

1-Phase Intelligent Dual Feed PDU Series



W PDU

Circuit Monitoring

Outlet nos			208V - 20A / 30A 230V - 16A / 20A / 32A
C13	C19		
20	6	x 2	DV40C13 / 12C19-W
20	4	x 2	DV40C13 / 8C19-W
16	4	x 2	DV32C13 / 8C19-W
20		x 2	DV40C13-W
16		x 2	DV32C13-W
NEMA			110V - 15A / 20A / 30A
20		x 2	DV40US-W
16		x 2	DV32US-W

WS PDU

Outlet Switching + Circuit Monitoring

Outlet nos			208V - 20A / 30A 230V - 16A / 20A / 32A
C13	C19		
20	6	x 2	DV40C13 / 12C19-WS
20	4	x 2	DV40C13 / 8C19-WS
16	4	x 2	DV32C13 / 8C19-WS
20		x 2	DV40C13-WS
16		x 2	DV32C13-WS
NEMA			110V - 15A / 20A / 30A
20		x 2	DV40US-WS
16		x 2	DV32US-WS

Wi PDU

Outlet & Circuit Monitoring

Outlet nos			208V - 20A / 30A 230V - 16A / 20A / 32A
C13	C19		
20	6	x 2	DV40C13 / 12C19-Wi
20	4	x 2	DV40C13 / 8C19-Wi
16	4	x 2	DV32C13 / 8C19-Wi
20		x 2	DV40C13-Wi
16		x 2	DV32C13-Wi
NEMA			110V - 15A / 20A / 30A
20		x 2	DV40US-Wi
16		x 2	DV32US-Wi

WSi PDU

Outlet nos			208V - 20A / 30A 230V - 16A / 20A / 32A
C13	C19		
20	6	x 2	DV40C13 / 12C19-WSi
20	4	x 2	DV40C13 / 8C19-WSi
16	4	x 2	DV32C13 / 8C19-WSi
20		x 2	DV40C13-WSi
16		x 2	DV32C13-WSi
NEMA			110V - 15A / 20A / 30A
20		x 2	DV40US-WSi
16		x 2	DV32US-WSi

Dimension (mm) : 1650 (H) x 85 (W) x 90 (D)

1 inch = 25.4 mm

* Configuration & dimension may be modified without prior notice

Available for : - Custom PDU

- Colored IEC Outlet

- Lockable or Individually Fused IEC Outlet PDU

230V PDU

Inlet	Amp	Cordset	
		mm ²	length
60309	32A	4	3 M
Open end	20A	2.5	3 M
C20	16A	1.5	3 M
BS1363	13A	1.5	3 M

Outlet	C13	C19

208V PDU

Inlet	Amp	Cordset	
		AWG	length
L6-30P	30A	10	10 FT
L6-20P	20A	12	10 FT

Outlet	C13	C19

110V PDU

Inlet	Amp	Cordset	
		AWG	length
L5-30P 5-30P	30A	10	10 FT
L5-20P 5-20P	20A	12	10 FT
5-15P	15A	14	10 FT

Outlet	NEMA

Austin Hughes has an extensive distribution network, including the Americas, EMEA, ASEAN & APAC.

Contact your nearest sales office for details of local presentation.

Sales Inquiry

inquiry@austin-hughes.com

Technical Support

support@austin-hughes.com

Distributed by:

Distributor by country on application