



InfraRack S7 Standalone Series

PROXIMITY
SMARTCARD



MIFARE
SMARTCARD



To satisfy high level data center requirements, Austin Hughes have launched an intelligent rack integrated with alloy swing handles & control panel with 2.8" touchscreen.

InfraRack S7 series provides the most innovative but affordable solution to the rack essentials in the 21st century data centers.



Dual Security : SmartCard + NumPad

Via NumPad & SmartCard, the InfraRack S7 allows two-factor authentication to verify user ID. It ensures dual security for the rack access control.



Temp. + Humid. Sensor, Light Bar & PDU Integration

Control panel can provide local display & monitoring for integrated InfraPower W3 intelligent PDUs, Temp.+Humid sensors & LED light bar.



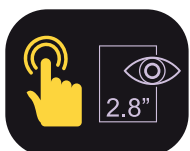
Rugged & Aesthetic Swing Handle

Alloy S-700 handle is rigid & durable for maintaining reliable physical security. Swing locking / unlocking mechanism suits most rack user practice. An aesthetically enhanced smart locking handle is ideal for your smart data center environment.



LED for Clear Lock Status Indication

LED color modes on the smartcard handle indicate the lock status clearly. Blue & green LED indicate the locked status of Proximity & MiFARE handle respectively. An authorized unlock is signaled by a silver white flashing LED. Unauthorized rack access will result in a red flashing LED following with an audible alarm.

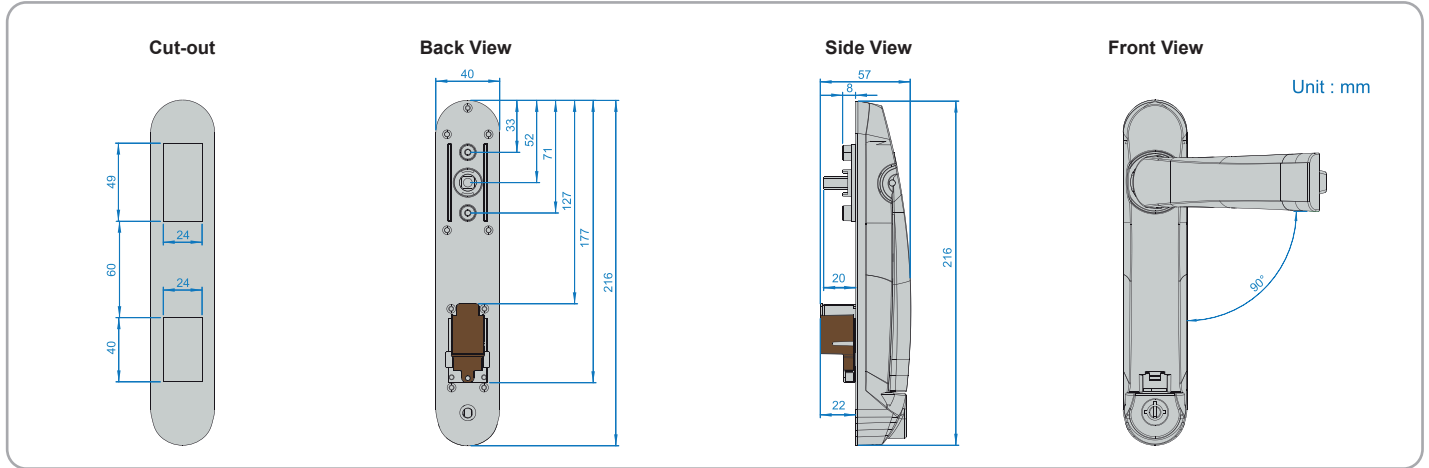


Sophisticated Control Panel w/ Touchscreen

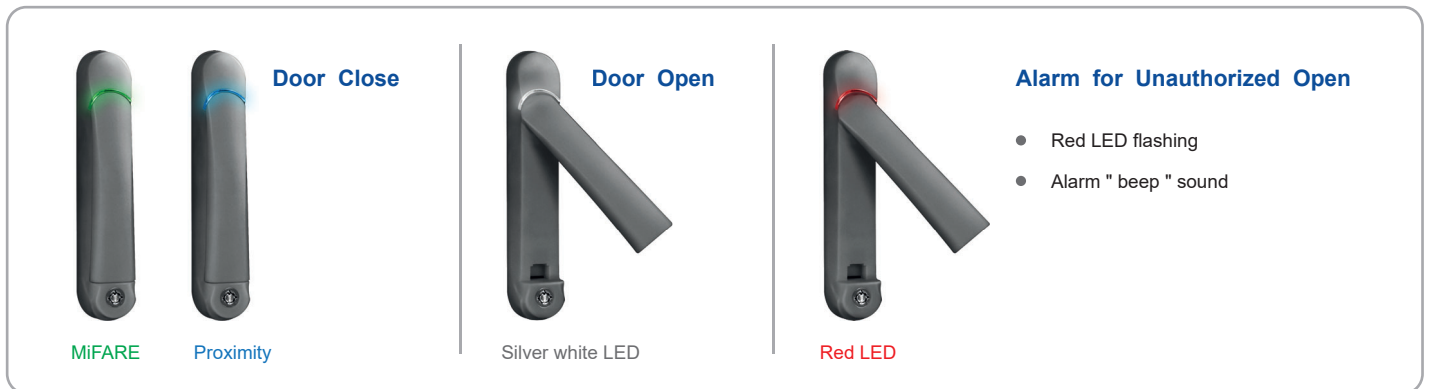
All InfraRack S7 packages are supplied with a control panel that includes a 2.8" touchscreen with NumPad function. Built-in SmartCard sensor is compatible to MiFARE or Proximity SmartCard. By connecting to InfraPower W3 version intelligent PDU with temp+humid sensors, the controller can also provide local monitoring on Amp and Temp. + Humid.

Patented and Worldwide Patents Pending

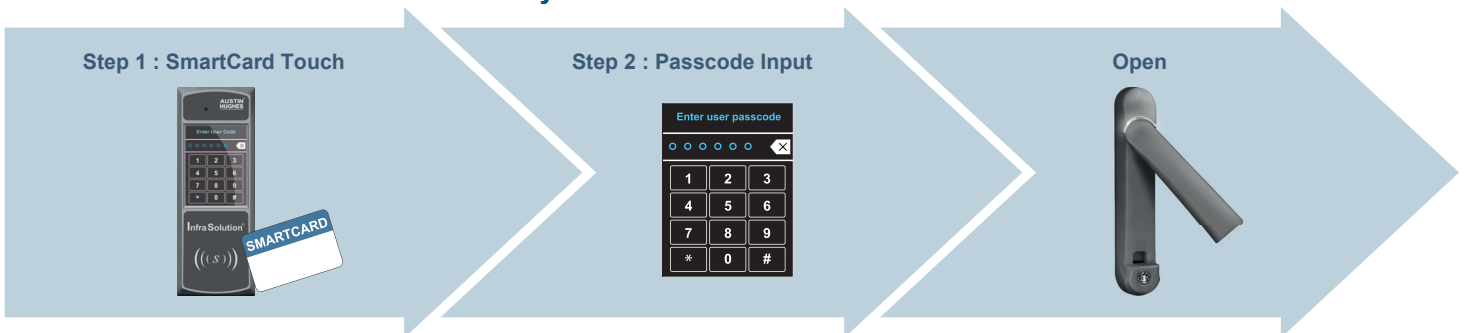
Alloy Swing Handle - Stylish Mechanical Design



Handle LED



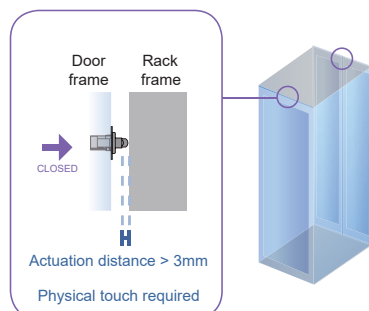
Two-factor Authentication - Dual Security



Mechanical Door Sensor, pair

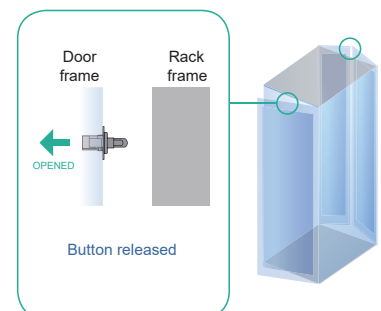
DOOR CLOSE

- Close door
- Sensor button is pressed on
- **DOOR CLOSE SIGNAL** sends out



DOOR OPEN

- Open door
- Sensor button is released
- **DOOR OPEN SIGNAL** sends out



Control Panel

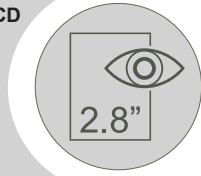
Touchscreen color LCD

- Resistive touch
- Sophisticated & stylish
- Ease of use



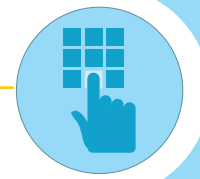
Display & Monitoring via 2.8" LCD

- Rack information
- Door status
- Alarm notification
- Temp. / Humid. figures
- PDU Amp. figures



NumPad

- Passcode assignment
- Passcode authentication
- Add / delete user card

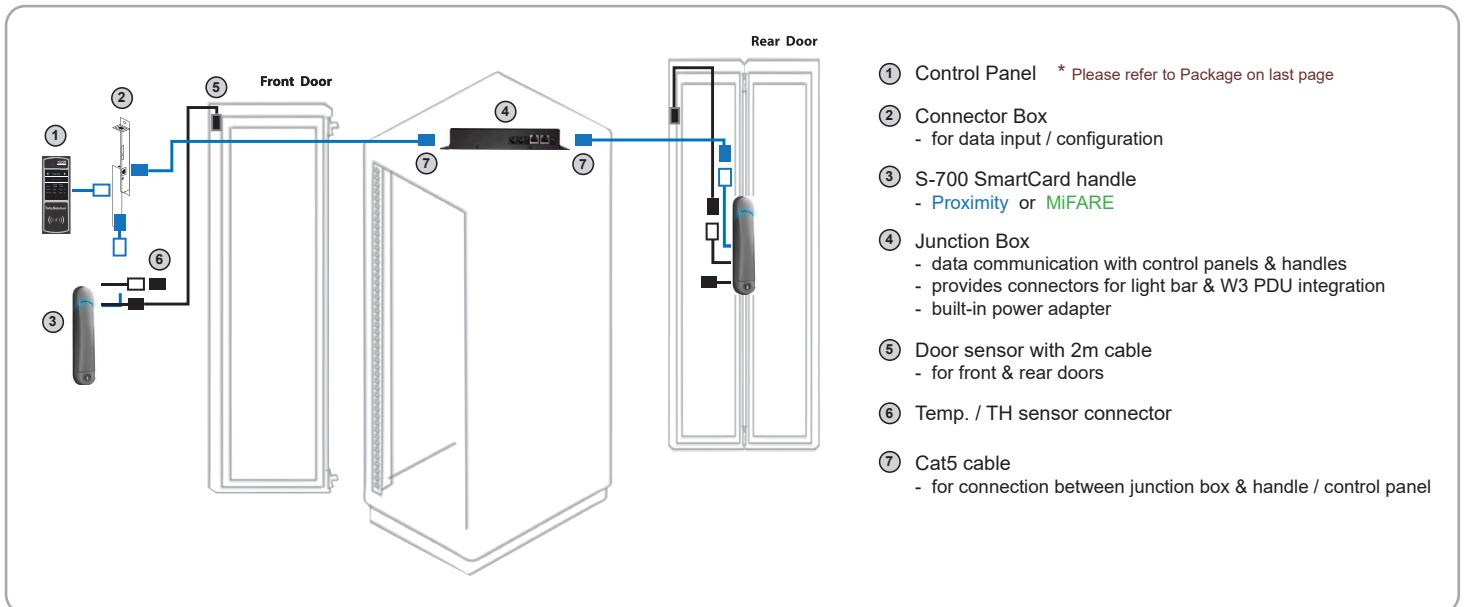


SmartCard sensor

- Proximity 26-bit
- MiFARE 26-bit :
 - Classic
 - DESFire EV1 / EV2
 - Plus S / Plus X
 - Plus EV1

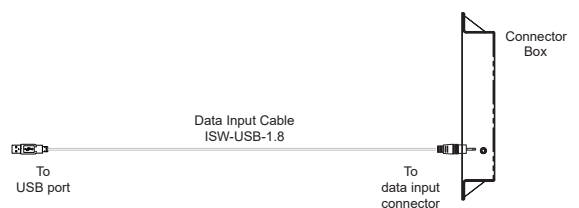
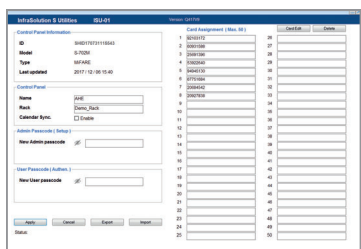


Installation Diagram



Software

Via the **Free** utilities (ISU-01), client can change the admin./ user passcodes and assign the smartcards. Max. 50 user card authentication per control panel can be managed. The setup is easy via optional data input cable (ISW-USB-1.8).



>>> Infra-S7-SR Heavy Duty Rack



SR Key Highlights

- Front 2.8" control panel for passcode & **MiFare** or **Proximity** smartcard access
- Front perforated door w/ alloy swing motor handle
- Rear perforated middle split door w/ alloy swing motor handle
- Heavy duty server rack
- 600 & 800 wide models meet up-to-date requirements of global data center
- Split side panel w/ lock & latch, pair
- Fully vented top cover w/ cable access channel
- Framework allows multi-dimensional cable pathways and numerous efficient cabling options
- Well-engineered to accommodate tool-less mounting PDU x 4
- Easy to deploy and adaptable to Aisle containment to achieve efficient airflow management
- Quick release mechanism design for doors and split side panels
- Tool-less adjustment for front and rear 19" rails
- Heavy duty castor & adjustable feet, set of 4
- Dynamic earthing kit
- M6 screw fixing, pack of 50



REACH

600W	Package No.	Width		Depth				Height			
				Overall (door to door)		Effective (frame to frame)		Overall (w/ casters)		Effective	
		mm	inch	mm	inch	mm	inch	mm	inch	mm	inch
42U	Infra-S7-SR-6042	600	24"	1072	42"	1000	39"	2035	80"	1867	74"
	Infra-S7-SR-6242	600	24"	1200	47"	1128	44"	2035	80"	1867	74"
45U	Infra-S7-SR-6045	600	24"	1072	42"	1000	39"	2168	85"	2000	79"
	Infra-S7-SR-6245	600	24"	1200	47"	1128	44"	2168	85"	2000	79"
47U	Infra-S7-SR-6047	600	24"	1072	42"	1000	39"	2257	89"	2089	82"
	Infra-S7-SR-6247	600	24"	1200	47"	1128	44"	2257	89"	2089	82"
52U	Infra-S7-SR-6252	600	24"	1200	47"	1128	44"	2480	98"	2312	91"



MiFare package - Add **M** on the model no., sample : Infra-S7-SR-6042**M**

** Custom size on request

1500 kg 3300 lb



Proximity package - Add **P** on the model no., sample : Infra-S7-SR-6042**P**

800W	Package No.	Width		Depth				Height			
				Overall (door to door)		Effective (frame to frame)		Overall (w/ casters)		Effective	
		mm	inch	mm	inch	mm	inch	mm	inch	mm	inch
42U	Infra-S7-SR-8042	800	31"	1072	42"	1000	39"	2035	80"	1867	74"
	Infra-S7-SR-8242	800	31"	1200	47"	1128	44"	2035	80"	1867	74"
45U	Infra-S7-SR-8045	800	31"	1072	42"	1000	39"	2168	85"	2000	79"
	Infra-S7-SR-8245	800	31"	1200	47"	1128	44"	2168	85"	2000	79"
47U	Infra-S7-SR-8047	800	31"	1072	42"	1000	39"	2257	89"	2089	82"
	Infra-S7-SR-8247	800	31"	1200	47"	1128	44"	2257	89"	2089	82"
52U	Infra-S7-SR-8252	800	31"	1200	47"	1128	44"	2480	98"	2312	91"



MiFare package - Add **M** on the model no., sample : Infra-S7-SR-8042**M**

** Custom size on request

1500 kg 3300 lb



Proximity package - Add **P** on the model no., sample : Infra-S7-SR-8042**P**

SR 600W Heavy Duty Rack

Standard Split

Quick access design for service from side panel



Fully Perforated

Gives 80% perforated area w/ smartcard handle



Perforated Top



Fully Perforated Middle Split

Space-saving design for narrow aisle w/ smartcard handle

SR 800W Heavy Duty Rack

Standard Split

Quick access design for service from side panel



Fully Perforated

Perforated w/ smartcard handle



Perforated Top



Fully Perforated Middle Split

Space-saving design for narrow aisle w/ smartcard handle

Standard Color

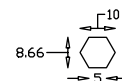
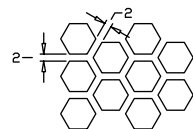
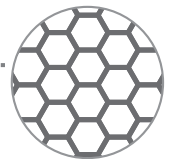
- Black (RAL 9005)
- White (RAL 9016)

** Custom color on request



Fully Perforated Door

- Door ventilation up to 80% perforated area
- Stylish hexagon pattern



Unit : mm

>>> Infra-S7-NSR Medium Duty Rack



NSR Key Highlights

- Front 2.8" control panel for passcode & **MiFare** or **Proximity** smartcard access
- Front perforated door w/ alloy swing motor handle
- Rear perforated middle split door w/ alloy swing motor handle
- Medium duty server rack
- 600 & 800 wide models meet up-to-date requirements of global data center
- Side panel w/ latch, pair
- Fully vented top cover w/ cable access channel
- Framework allows multi-dimensional cable pathways and numerous efficient cabling options
- Well-engineered to accommodate tool-less mounting PDU x 2
- Easy to deploy and adaptable to Aisle containment to achieve efficient airflow management
- Quick release mechanism design for doors and split side panels
- Tool-less adjustment for front and rear 19" rails
- Heavy duty castor & adjustable feet, set of 4
- Dynamic earthing kit
- M6 screw fixing, pack of 50



REACH

600W	Package No.	Width		Depth				Height			
				Overall (door to door)		Effective (frame to frame)		Overall (w/ casters)		Effective	
		mm	inch	mm	inch	mm	inch	mm	inch	mm	inch
42U	Infra-S7-NSR-6042	600	24"	1072	42"	1000	39"	2035	80"	1867	74"
	Infra-S7-NSR-6242	600	24"	1200	47"	1128	44"	2035	80"	1867	74"
45U	Infra-S7-NSR-6045	600	24"	1072	42"	1000	39"	2168	85"	2000	79"
	Infra-S7-NSR-6245	600	24"	1200	47"	1128	44"	2168	85"	2000	79"
47U	Infra-S7-NSR-6047	600	24"	1072	42"	1000	39"	2257	89"	2089	82"
	Infra-S7-NSR-6247	600	24"	1200	47"	1128	44"	2257	89"	2089	82"
52U	Infra-S7-NSR-6252	600	24"	1200	47"	1128	44"	2480	98"	2312	91"



MiFare package - Add **M** on the model no., sample : Infra-X8-NSR-6042**M**

** Custom size on request

1000 kg 2200 lb



Proximity package - Add **P** on the model no., sample : Infra-X8-NSR-6042**P**

800W	Package No.	Width		Depth				Height			
				Overall (door to door)		Effective (frame to frame)		Overall (w/ casters)		Effective	
		mm	inch	mm	inch	mm	inch	mm	inch	mm	inch
42U	Infra-S7-NSR-8042	800	31"	1072	42"	1000	39"	2035	80"	1867	74"
	Infra-S7-NSR-8242	800	31"	1200	47"	1128	44"	2035	80"	1867	74"
45U	Infra-S7-NSR-8045	800	31"	1072	42"	1000	39"	2168	85"	2000	79"
	Infra-S7-NSR-8245	800	31"	1200	47"	1128	44"	2168	85"	2000	79"
47U	Infra-S7-NSR-8047	800	31"	1072	42"	1000	39"	2257	89"	2089	82"
	Infra-S7-NSR-8247	800	31"	1200	47"	1128	44"	2257	89"	2089	82"
52U	Infra-S7-NSR-8252	800	31"	1200	47"	1128	44"	2480	98"	2312	91"



MiFare package - Add **M** on the model no., sample : Infra-X8-NSR-8042**M**

** Custom size on request

750 kg 1650 lb



Proximity package - Add **P** on the model no., sample : Infra-X8-NSR-8042**P**

NSR 600W Medium Duty Rack

Standard Plain

Tool-less installation or removal when maximizing systems or equipment density



Perforated Top



Fully Perforated Middle Split

Space-saving design for narrow aisle w/ smartcard handle

Fully Perforated

Gives 80% perforated area w/ smartcard handle

NSR 800W Medium Duty Rack

Standard Plain

Tool-less installation or removal when maximizing systems or equipment density



Perforated Top



Fully Perforated Middle Split

Space-saving design for narrow aisle w/ smartcard handle

Fully Perforated

Perforated w/ smartcard handle

Standard Color

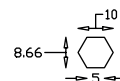
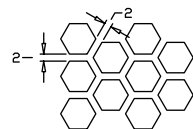
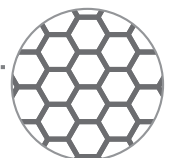
- Black (RAL 9005)
- White (RAL 9016)

** Custom color on request



Fully Perforated Door

- Door ventilation up to 80% perforated area
- Stylish hexagon pattern



Unit : mm

>>> Package & Options

Package for Access Control

	Standard		Upgrade	
	Proximity	MIFARE	Proximity	MIFARE
① Handle, pair				
② SmartCard, 1pc				
③ Control panel	1	1	2	2
④ Connector box	1	1	2	2
⑤ Connector box to handle cable	1	1	2	2
⑥ Junction box	1	1	1	1
⑦ Mechanical door sensor, pair	1	1	1	1
⑧ Key	1	1	1	1



Optional Accessories

Temp. + Humid. Sensor
(IG-TH01)



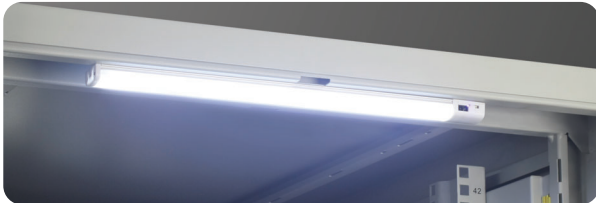
Temp. Sensor
(IG-T01)



Low profile design w/ magnetic base

Each S-700 handle provides one connector for Temp. or Temp.+ Humid. sensor integration. Once connected, Control Panel LCD will show the Temp. / Humid. figures.

LED Light Bar (CLB-SD-IR-101)



Junction Box provides two connectors for LED light bar integration.

- Auto ON / OFF by door status change
- Low profile design w/ magnetic base

- Data Input Cable, pc (ISW-USB-1.8)
- Proximity Smartcard, pack of 10 (ISC-P10)
- MIFARE Smartcard, pack of 10 (ISC-M10)
- Proximity Card Reader (ISC-PCR)
- MIFARE Card Reader (ISC-MCR)
- Individual Key Lock, set of 2 for front & rear door (ISK-C051)
- Unique Key Lock (ISK-UKL)

Intelligent PDUs

- W3 series Monitored Switched Monitored w/ Outlet Measurement Switched w/ Outlet Measurement

Junction Box provides two connectors for W3 Series PDU integration. Once connected, Control Panel LCD will show the PDU Amp figures.



* For models & configurations details, please contact us at inquiry@austin-hughes.com



As a leading global IT manufacturer, Austin Hughes provides TAA-compliant data center solutions, manufactures and assembles products in strategic TAA-certified locations.

Austin Hughes has an extensive distribution network, including the Americas, EMEA, APAC & ASEAN. Contact your nearest sales office for details of local representation.

Sales Inquiry
inquiry@austin-hughes.com

Technical Support
support@austin-hughes.com

Distributed by:

Distributor by country on application