



Dual Security : SmartCard + NumPad

Via NumPad & SmartCard, the InfraSolution S-700 allows two-factor authentication to verify user ID. It ensures dual security for the rack access control.

Designed for IT Branded Racks

InfraSolution S-700 is designed for the global IT branded racks. The handle's universal mounting cut-out generally allows easy integration with most third party racks. The 2.8" touchscreen control panel can be mounted to the perforated door easily. Costly & complicated door customization is not required.

Rugged & Aesthetic Swing Handle

Alloy S-700 handle is rigid & durable for maintaining reliable physical security. Swing locking / unlocking mechanism suits most rack user practice. An aesthetically enhanced smart locking handle is ideal for your smart data center environment.

LED for Clear Lock Status Indication

LED color modes on the smartcard handle indicate the lock status clearly. Blue & green LED indicate the locked status of Proximity & MiFARE handle respectively. An authorized unlock is signaled by a silver white flashing LED. Unauthorized rack access will result in a red flashing LED following with an audible alarm.

Sophisticated Control Panel w/ Touchscreen

All S-700 packages are supplied with a control panel that includes a 2.8" touchscreen with NumPad function. Built-in SmartCard sensor is compatible to MiFARE or Proximity SmartCard. By connecting to InfraPower W3 version intelligent PDU with temp+humid sensors, the controller can also provide local monitoring on Amp and Temp. + Humid.

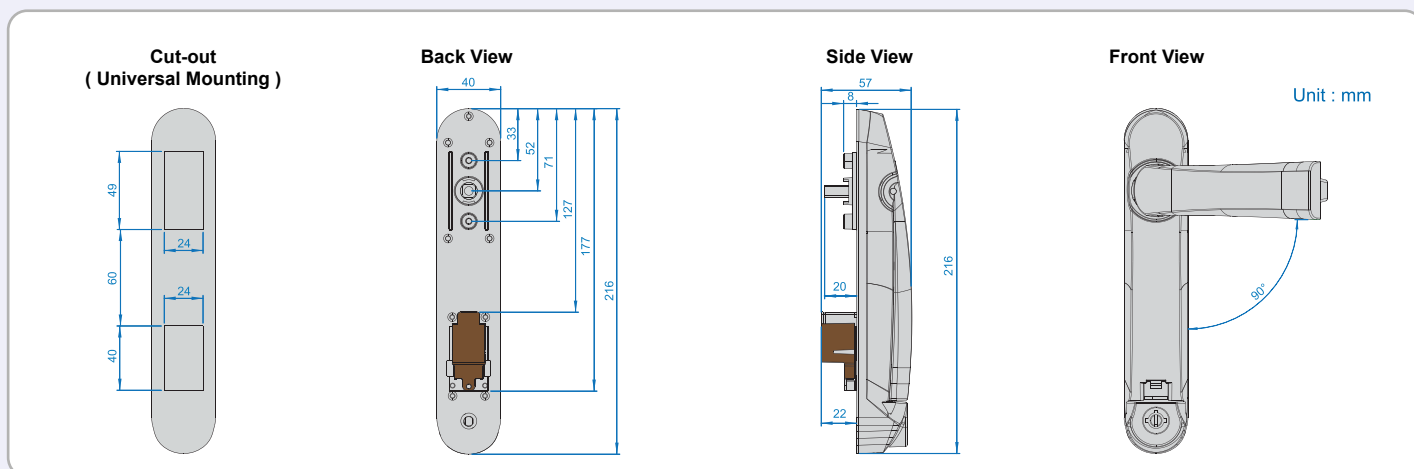
Temp. + Humid. Sensor, Light Bar & PDU Integration

S-700 control panel can provide local display & monitoring for integrated InfraPower W3 intelligent PDUs, Temp.+Humid sensors & LED light bar.



Alloy Swing Handle

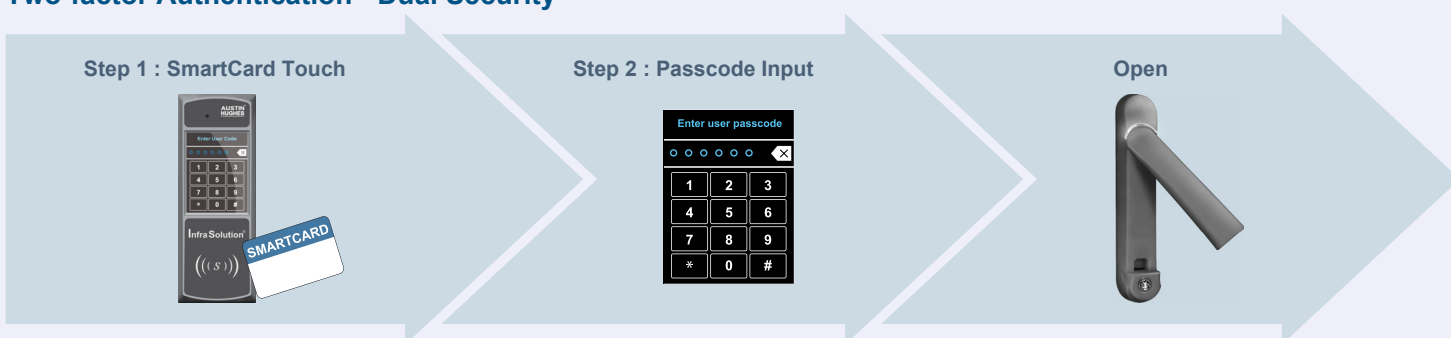
Most global branded racks equipped with swing handles have applied a standard handle cut out dimension on the door. To achieve the highest level of interoperability offered in the rack industry, the S-700 handle also applies the same mounting dimension.



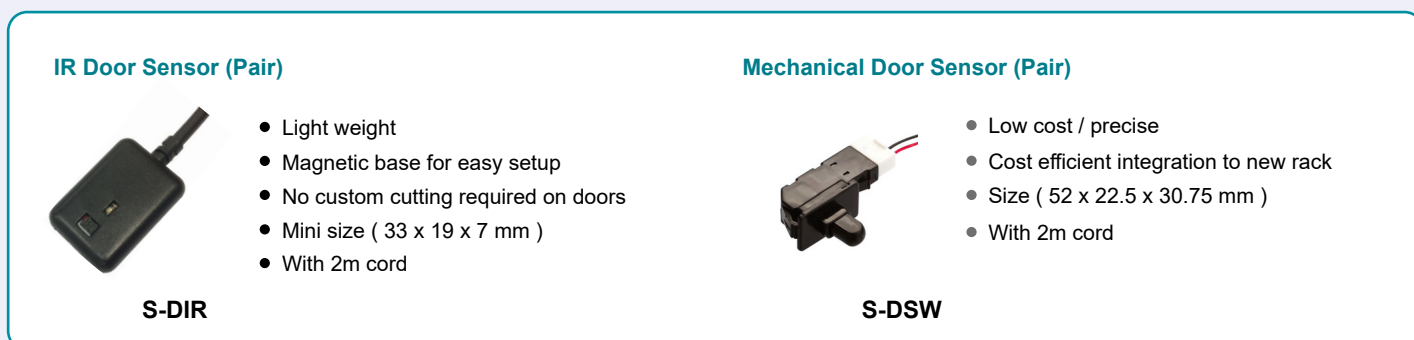
Handle LED



Two-factor Authentication - Dual Security



Door Sensor



Control Panel

Touchscreen color LCD

- Resistive touch
- Sophisticated & stylish
- Ease of use

Display & Monitoring via 2.8" LCD

- Rack information
- Door status
- Alarm notification
- Temp. / Humid. figures
- PDU Amp. figures

NumPad

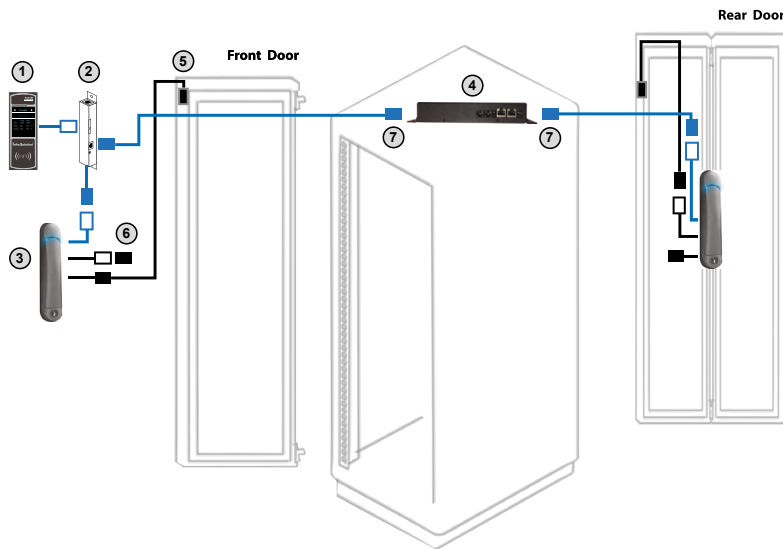
- Passcode assignment
- Passcode authentication
- Add / delete user card

SmartCard sensor

- Proximity 26-bit
- MiFARE 26-bit :
 - Classic
 - DESFire EV1 / EV2
 - Plus S / Plus X
 - Plus EV1



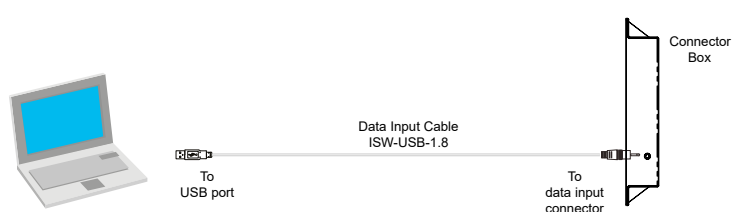
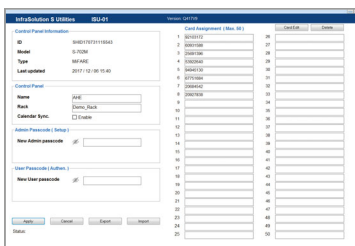
Installation Diagram



- ① Control Panel * Please refer to Package on last page
- ② Connector Box
- for data input / configuration
- ③ S-700 SmartCard handle
- Proximity or MiFARE
- ④ Junction Box
- data communication with control panels & handles
- provides connectors for light bar & W3 PDU integration
- built-in power adapter
- ⑤ Door sensor with 2m cable
- for front & rear doors
- ⑥ Temp. / TH sensor connector
- ⑦ Cat5 cable
- for connection between junction box & handle / control panel
- The cable length can be customized subject to rack size
- NOT provided

Software

Via the **Free** utilities (ISU-01), client can change the admin./ user passcodes and assign the smartcards. Max. 50 user card authentication per control panel can be managed. The setup is easy via optional data input cable (ISW-USB-1.8).



Package

	S-701P	S-702P	S-701M	S-702M
① Handle, pair	Proximity	Proximity	MiFARE	MiFARE
② SmartCard, 1pc				
③ Control panel	1	2	1	2
④ Connector box	1	2	1	2
⑤ Connector box to handle cable	1	2	1	2
⑥ Control panel screw set	1	2	1	2
⑦ Junction box	1	1	1	1
⑧ Key	1	1	1	1
⑨ Power cord, 6ft	1	1	1	1
⑩ Handle screw set	1	1	1	1
⑪ Cable clip	8	8	8	8

* Door sensor is an essential part. 2 kinds of door sensors below can be selected :
 IR Door Sensor, pair (S-DIR)
 Mechanical Door Sensor, pair (S-DSW)



Optional Accessories

Temp. + Humid. Sensor
(IG-TH01)



Temp. Sensor
(IG-T01)



Low profile design w/ magnetic base

Each S-700 handle provides one connector for Temp. or Temp.+ Humid. sensor integration. Once connected, Control Panel LCD will show the Temp. / Humid. figures.

LED Light Bar (CLB-SD-IR-101)



Junction Box provides two connectors for LED light bar integration.

- Auto ON / OFF by door status change
- Low profile design w/ magnetic base

Intelligent PDUs

- W3 series Monitored Switched Monitored w/ Outlet Measurement Switched w/ Outlet Measurement

Junction Box provides two connectors for W3 Series PDU integration. Once connected, Control Panel LCD will show the PDU Amp figures.



* For models & configurations details, please contact us at inquiry@austin-hughes.com



As a leading global IT manufacturer, Austin Hughes provides TAA-compliant data center solutions, manufactures and assembles products in strategic TAA-certified locations.

- Data Input Cable, pc (ISW-USB-1.8)
- Proximity Smartcard, pack of 10 (ISC-P10)
- MiFARE Smartcard, pack of 10 (ISC-M10)
- Proximity Card Reader (ISC-PCR)
- MiFARE Card Reader (ISC-MCR)
- Individual Key Lock, set of 2 for front & rear door (ISK-C051)
- Unique Key Lock (ISK-UKL)

Austin Hughes has an extensive distribution network, including the Americas, EMEA, ASEAN & APAC. Contact your nearest sales office for details of local representation.

Sales Inquiry
inquiry@austin-hughes.com

Technical Support
support@austin-hughes.com

Distributed by:

Distributor by country on application