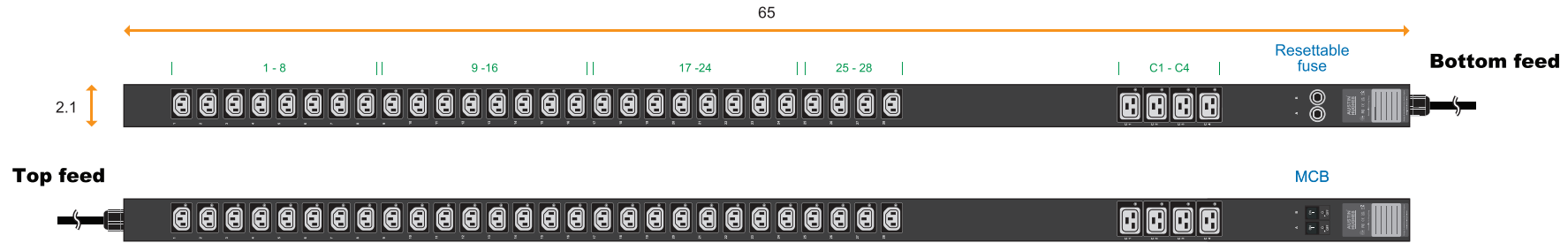


1-Phase Basic PDU specification drawing

208V 20A / 30A PDU : C13 x 28 + C19 x 4

unit : inch



Circuit Protection	Code
Fuse	F
MCB	CR

PDU Feed	Code
Bottom	B
Top	T

Chassis Color	Code
Black	1
White	2
Red	3
Blue	4
Green	5
Orange	6
Yellow	7
Purple	8

Standard color: Black



NEMA L6-30P

30A model :	Circuit Protection
V28C13/4C19-30A/ F _L630/3 B -1	Resettable Fuse x 2
V28C13/4C19-30A/ CR _L630/3 T -1	1-pole MCB x 2

Input Rating : 30Amp, 208V
Cordset : 10 feet UL SJT 10 AWG cordset
Protection : 16A resettable fuse or 16A hydraulic MCB x 2
Circuit A : Output 12A max., C13 #1-14 + C19 #C1-C2
Circuit B : Output 12A max., C13 #15-28 + C19 #C3-C4
Weight : Net 14.26 lb / Gross 18.50 lb



NEMA L6-20P



20A model :	Circuit Protection
V28C13/4C19-20A/ F _L620/3 B -1	Resettable Fuse x 1
V28C13/4C19-20A/ CR _L620/3 T -1	1-pole MCB x 1

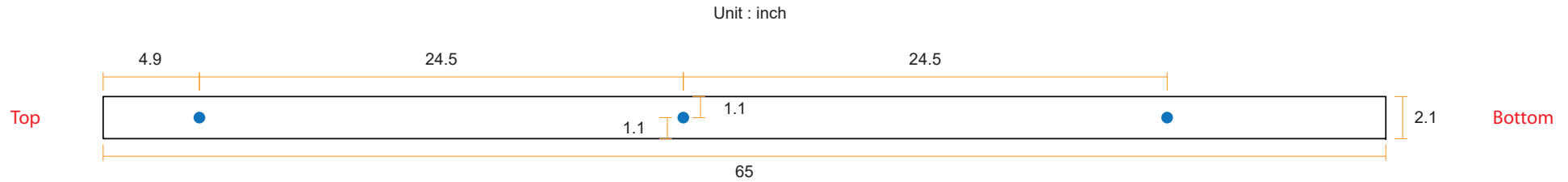
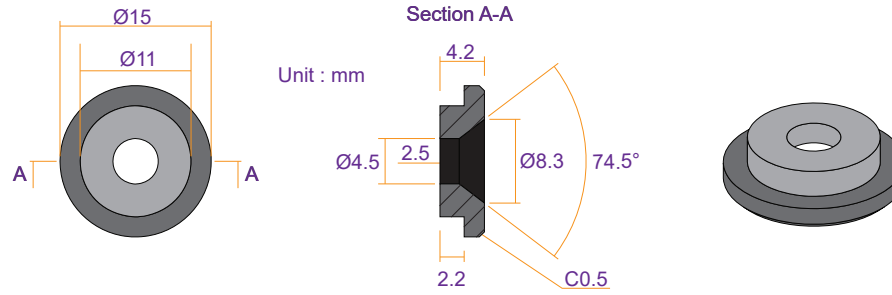
Input Rating : 20Amp, 208V
Cordset : 10 feet UL SJT 12 AWG cordset
Protection : 20A resettable fuse or 20A hydraulic MCB x 1
Circuit : Output 16A max., C13 #1-28 + C19 #C1-C4
Weight : Net 12.94 lb / Gross 17.17 lb

Operating Temperature : -5 to 60 °C
Storage Temperature : -25 to 65 °C
Operating Altitude : 0 to 2,000 m
Storage Altitude : 0 to 15,000 m
Humidity : 8 to 95% RH, non-condensing



EMC Compliance : FCC Part 15 Subpart B (Class A)
Safety Compliance : Tested to UL60730-1:2016 and CAN/CSA-E60730-1:2015
Tested to UL62368-1:2014 and CAN/CSA-C22.2 No.62368-1:2014
Environment Compliance : RoHS3 & REACH

VMS Mounting Button

 **x 3** +  **x 3**
M4 Screw
 - Flat head
 - M4x8mm
PEG



VMB Mounting Bracket

 **x 4** +  **x 2**
M3.2 Screw
 - Flat head
 - M3.2x6mm
Bracket

