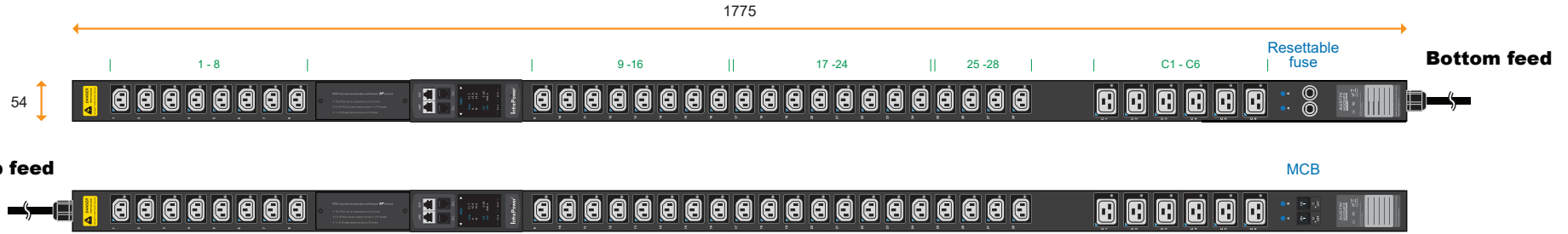


1-Phase switched PDU + outlet measurement specification drawing

230V 16A / 20A / 32A PDU : C13 x 28 + C19 x 6

unit : mm



| Circuit Protection | Code |
|--------------------|-----------|
| Fuse | F |
| MCB | CR |



| 32A model : | Circuit Protection |
|--|---------------------|
| V28C13/6C19-32A-WSi/F_EN/3 B-1 | Resettable Fuse x 2 |
| V28C13/6C19-32A-WSi/CR_EN/3 T-1 | 1-pole MCB x 2 |

Input Rating : 32Amp, 230V
Cordset : 3 meter 4.0mm sq. H05V V-F cordset
Protection : 16A resettable fuse or 16A hydraulic MCB x 2
Circuit A : Output 16A max., C13 #1-14 + C19 #C1-C3
Circuit B : Output 16A max., C13 #15-28 + C19 #C4-C6
Weight : Net 8.64 Kg / Gross 10.57 Kg

| PDU Feed | Code |
|----------|----------|
| Bottom | B |
| Top | T |



| 20A model : | Circuit Protection |
|--|---------------------|
| V28C13/6C19-20A-WSi/F_OE/3 B-1 | Resettable Fuse x 1 |
| V28C13/6C19-20A-WSi/CR_OE/3 T-1 | 1-pole MCB x 1 |

Input Rating : 20Amp, 230V
Cordset : 3 meter 2.5mm sq. H05V V-F cordset
Protection : 20A resettable fuse or 20A hydraulic MCB x 1
Circuit : Output 20A max., C13 #1-28 + C19 #C1-C6
Weight : Net 7.88 Kg / Gross 9.80 Kg

| Chassis Color | Code |
|---------------|----------|
| Black | 1 |
| White | 2 |
| Red | 3 |
| Blue | 4 |
| Green | 5 |
| Orange | 6 |
| Yellow | 7 |
| Purple | 8 |



| 16A model : | Circuit Protection |
|--|---------------------|
| V28C13/6C19-16A-WSi/F_EN/3 B-1 | Resettable Fuse x 1 |
| V28C13/6C19-16A-WSi/CR_EN/3 T-1 | 1-pole MCB x 1 |

Input Rating : 16Amp, 230V
Cordset : 3 meter 1.5mm sq. H05V V-F cordset
Protection : 16A resettable fuse or 16A hydraulic MCB x 1
Circuit : Output 16A max., C13 #1-28 + C19 #C1-C6
Weight : Net 7.81 Kg / Gross 9.73 Kg



| 16A model : | Circuit Protection |
|---|---------------------|
| V28C13/6C19-16A-WSi/F_C20/3 B-1 | Resettable Fuse x 1 |
| V28C13/6C19-16A-WSi/CR_C20/3 T-1 | 1-pole MCB x 1 |

Input Rating : 16Amp, 230V
Cordset : 3 meter 1.5mm sq. H05V V-F cordset
Protection : 16A resettable fuse or 16A hydraulic MCB x 1
Circuit : Output 16A max., C13 #1-28 + C19 #C1-C6
Weight : Net 7.73 Kg / Gross 9.66 Kg

Standard color: Black

Operating Temperature : -5 to 60 °C
Storage Temperature : -25 to 65 °C
Operating Altitude : 0 to 2,000 m
Storage Altitude : 0 to 15,000 m
Humidity : 8 to 95% RH, non-condensing

Meter Features (WSi Switched PDU + Outlet Measurement)
Local Display : Field replaceable 2.8" color LCD with touchscreen
Bank Measurement : Current (A), Energy (kWh), Voltage (V) & Power factor
Outlet Measurement : Current (A), Energy (kWh)
Outlet Control : Outlet Switch ON / OFF
Accuracy : ±1% Billing-grade
IP Access : via IP dongle, one IP Access up to 32 PDU Levels
Cascade : Up to 32 PDU under single IP address via IP dongle
SNMP : V2 / V3 via IP dongle
Sensor Port x 2 : Temp. Sensor / Temp. + Humid. Sensor

EMC Compliance : CE / EMC
Safety Compliance : Tested to EN 62368-1:2014 / A11:2017 standard
Tested to EN 60730-1:2016 / A1:2019 standard
Environment Compliance : RoHS3 & REACH

AUSTIN HUGHES
Design. Manufacturing. Global Services.

The company reserves the right to modify product specifications without prior notice and assumes no responsibility for any error which may appear in this publication.

Copyright 2021 Austin Hughes Electronics Ltd. All rights reserved.

IP dongle (option)
- Dual LAN Network Failover
- 10/100 Ethernet & Gigabit Ethernet standard
- Enterprise IP Authentication, LDAPv3 / LDAPS, Active Directory®, RADIUS protocol

Product Dimension : 54 (W) x 80 (D) x 1775 (H) mm
Packing dimension (for 2 PDUs) : 110 (W) x 268 (D) x 2168 (H) mm

Lockable IEC Outlet

- Patented design for InfraPower PDU



C13 Outlet



C19 Outlet

Lockable IEC Cable

- Patented design of InfraPower PDU
- Low cost, easy to lock & secure
- Proprietary for lockable IEC outlet
- Applicable to standard IEC outlet
- 6 colors & 3 lengths available
- Custom color & length on request
- VDE & ENEC approval

C13 - C14

H05VV-F 3G 0.75mm²

| Cable Color | 0.5M | 1M | 2M |
|-------------|------|----|----|
| Black | ✓ | ✓ | ✓ |
| Grey | ✓ | ✓ | ✓ |
| Red | ✓ | ✓ | ✓ |
| Blue | ✓ | ✓ | ✓ |
| Green | ✓ | ✓ | ✓ |
| Orange | ✓ | ✓ | ✓ |



C19 - C20

H05VV-F 3G 1.5mm²

| Cable Color | 1M | 2M |
|-------------|----|----|
| Black | ✓ | ✓ |
| Grey | ✓ | ✓ |
| Red | ✓ | ✓ |
| Blue | ✓ | ✓ |
| Green | ✓ | ✓ |
| Orange | ✓ | ✓ |



C13 - C14



lockable cable

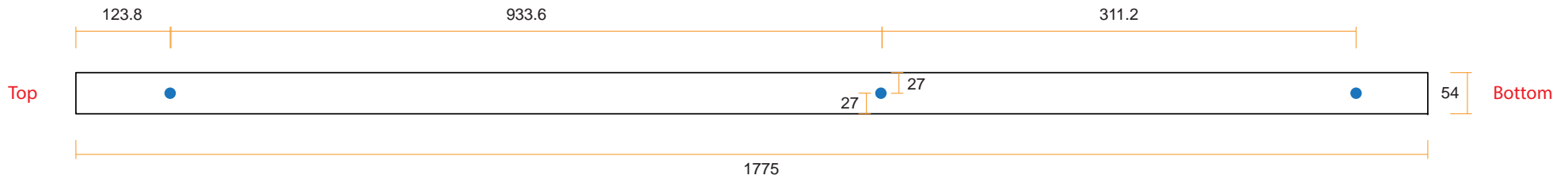
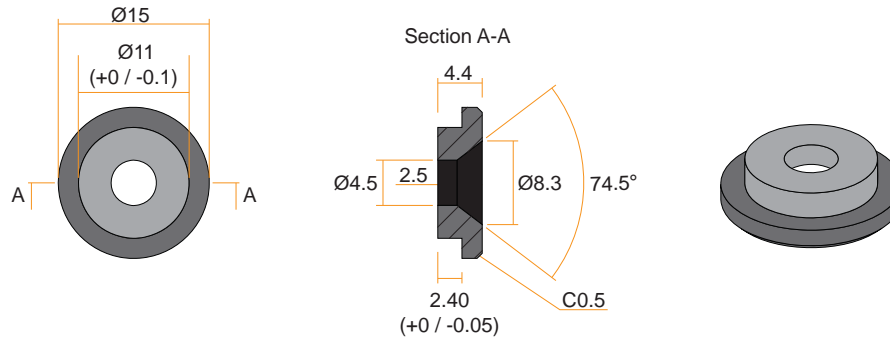
C19 - C20

- ✓ low cost
- ✓ easy to lock
- ✓ secure





VMS Mounting Button

 x 3 +  x 3
M4 Screw
 - Flat head
 - M4x10mm
PEG



VMB Mounting Bracket

 x 4 +  x 2
M3.2 Screw
 - Flat head
 - M3.2x6mm
Bracket

