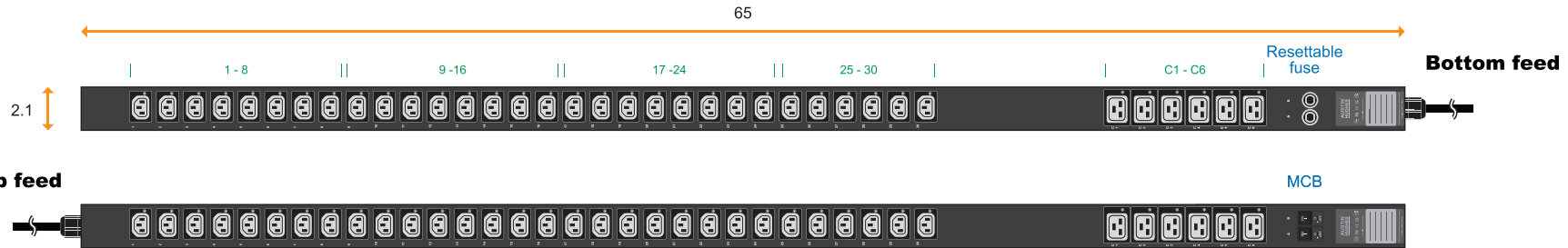


# 1-Phase Basic PDU specification drawing

208V 20A / 30A PDU : C13 x 30 + C19 x 6

unit : inch



Circuit Protection	Code
Fuse	<b>F</b>
MCB	<b>CR</b>

PDU Feed	Code
Bottom	<b>B</b>
Top	<b>T</b>

Chassis Color	Code
Black	<b>1</b>
White	<b>2</b>
Red	<b>3</b>
Blue	<b>4</b>
Green	<b>5</b>
Orange	<b>6</b>
Yellow	<b>7</b>
Purple	<b>8</b>

Standard color: Black



NEMA L6-30P

30A model :	Circuit Protection
V30C13/6C19-30A/ <b>F</b> _L630/3 <b>B</b> -1	Resettable Fuse x 2
V30C13/6C19-30A/ <b>CR</b> _L630/3 <b>T</b> -1	1-pole MCB x 2

Input Rating : 30Amp, 208V  
Cordset : 10 feet UL SJT 10 AWG cordset  
Protection : 16A resettable fuse or 16A hydraulic MCB x 2  
Circuit A : Output 12A max., C13 #1-15 + C19 #C1-C3  
Circuit B : Output 12A max., C13 #16-30 + C19 #C4-C6  
Weight : Net 14.43 lb / Gross 18.67 lb



NEMA L6-20P

20A model :	Circuit Protection
V30C13/6C19-20A/ <b>F</b> _L620/3 <b>B</b> -1	Resettable Fuse x 1
V30C13/6C19-20A/ <b>CR</b> _L620/3 <b>T</b> -1	1-pole MCB x 1

Input Rating : 20Amp, 208V  
Cordset : 10 feet UL SJT 12 AWG cordset  
Protection : 20A resettable fuse or 20A hydraulic MCB x 1  
Circuit : Output 12A max., C13 #1-30 + C19 #C1-C6  
Weight : Net 13.10 lb / Gross 17.34 lb

Operating Temperature : -5 to 60 °C  
Storage Temperature : -25 to 65 °C  
Operating Altitude : 0 to 2,000 m  
Storage Altitude : 0 to 15,000 m  
Humidity : 8 to 95% RH, non-condensing

EMC Compliance : FCC Part 15 Subpart B (Class A)  
Safety Compliance : Tested to UL60730-1:2016 and CAN/CSA-E60730-1:2015  
Tested to UL62368-1:2014 and CAN/CSA-C22.2 No.62368-1:2014  
Environment Compliance : RoHS3 & REACH





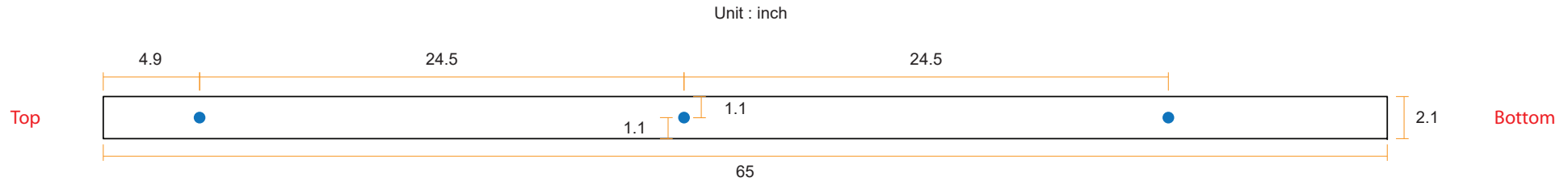
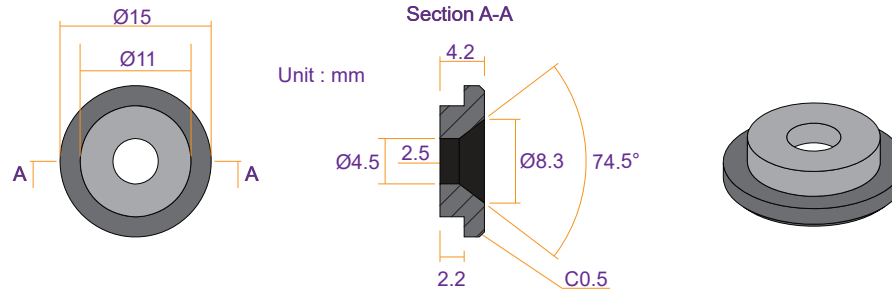
The company reserves the right to modify product specifications without prior notice and assumes no responsibility for any error which may appear in this publication.

Copyright 2023 Austin Hughes Electronics Ltd. All rights reserved.



Product Dimension : 2.1 (W) x 2.8 (D) x 65.0 (H) inch  
Packing dimension ( for 2 PDUs ) : 4.3 (W) x 10.6 (D) x 80.4 (H) inch

### VMS Mounting Button

 **x 3** +  **x 3**  
**M4 Screw**  
 - Flat head  
 - M4x8mm  
**PEG**



### VMB Mounting Bracket

 **x 4** +  **x 2**  
**M3.2 Screw**  
 - Flat head  
 - M3.2x6mm  
**Bracket**

