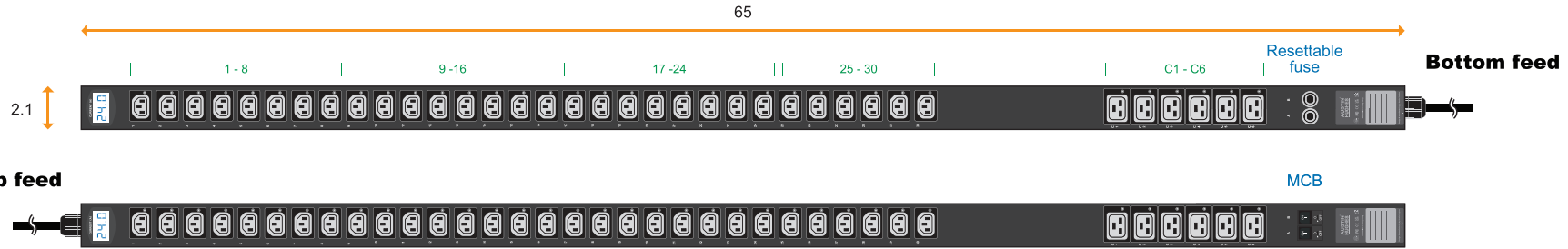


1-Phase metered PDU specification drawing

208V 20A / 30A PDU : C13 x 30 + C19 x 6

unit : inch



Circuit Protection	Code
Fuse	F
MCB	CR

PDU Feed	Code
Bottom	B
Top	T

Chassis Color	Code
Black	1
White	2
Red	3
Blue	4
Green	5
Orange	6
Yellow	7
Purple	8

Standard color: Black



NEMA L6-30P

30A model :	Circuit Protection
V30C13/6C19-30A-MD/ F _L630/3 B -1	Resettable Fuse x 2
V30C13/6C19-30A-MD/ CR _L630/3 T -1	1-pole MCB x 2

Input Rating : 30Amp, 208V
Cordset : 10 feet UL SJT 10 AWG cordset
Protection : 16A resettable fuse or 16A hydraulic MCB x 2
Circuit A : Output 12A max., C13 #1-15 + C19 #C1-C3
Circuit B : Output 12A max., C13 #16-30 + C19 #C4-C6
Weight : Net 14.69 lb / Gross 18.93 lb



NEMA L6-20P

20A model :	Circuit Protection
V30C13/6C19-20A-MD/ F _L620/3 B -1	Resettable Fuse x 1
V30C13/6C19-20A-MD/ CR _L620/3 T -1	1-pole MCB x 1

Input Rating : 20Amp, 208V
Cordset : 10 feet UL SJT 12 AWG cordset
Protection : 20A resettable fuse or 20A hydraulic MCB x 1
Circuit : Output 16A max., C13 #1-30 + C19 #C1-C6
Weight : Net 13.37 lb / Gross 17.61 lb

Operating Temperature : -5 to 60 °C
Storage Temperature : -25 to 65 °C
Operating Altitude : 0 to 2,000 m
Storage Altitude : 0 to 15,000 m
Humidity : 8 to 95% RH, non-condensing

Meter Features (MD metered PDU)

Local Display : 3-digit LED ammeter measuring input load current
Measurement : Current (A)
Accuracy : ± (3% of the reading + 5 digits) RMS

EMC Compliance : FCC Part 15 Subpart B (Class A)
Safety Compliance : Tested to UL60730-1:2016 and CAN/CSA-E60730-1:2015
Tested to UL62368-1:2014 and CAN/CSA-C22.2 No.62368-1:2014
Environment Compliance : RoHS3 & REACH



AUSTIN HUGHES
Design. Manufacturing. Global Services.

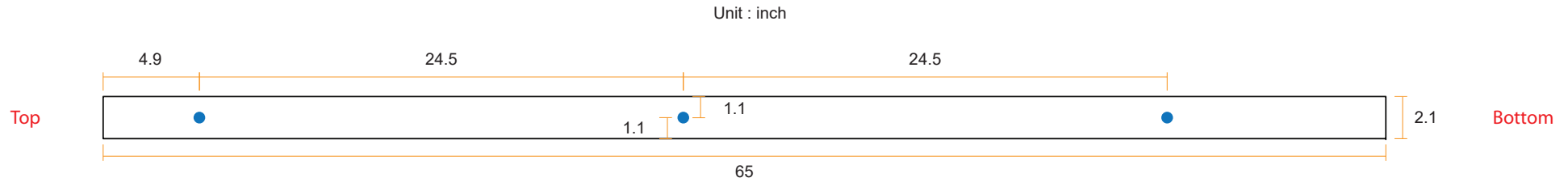
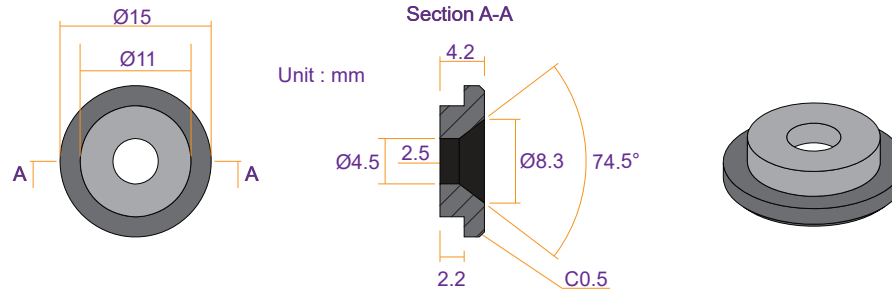
The company reserves the right to modify product specifications without prior notice and assumes no responsibility for any error which may appear in this publication.

Copyright 2023 Austin Hughes Electronics Ltd. All rights reserved.



Product Dimension : 2.1 (W) x 2.8 (D) x 65.0 (H) inch
Packing dimension (for 2 PDUs) : 4.3 (W) x 10.6 (D) x 80.4 (H) inch

VMS Mounting Button

 **x 3** +  **x 3**
M4 Screw
 - Flat head
 - M4x8mm
PEG



VMB Mounting Bracket

 **x 4** +  **x 2**
M3.2 Screw
 - Flat head
 - M3.2x6mm
Bracket

