

1-Phase metered PDU specification drawing

110V 15A / 20A / 30A PDU : US x 32

unit : inch



Circuit Protection	Code
Fuse	F
MCB	CR

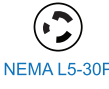


NEMA 5-30P

30A model :	Circuit Protection
V32US-30A-MD/ F _530/3 B -1	Resettable Fuse x 2
V32US-30A-MD/ CR _530/3 T -1	1-pole MCB x 2

Input Rating : 30Amp, 110V
Cordset : 10 feet UL SJT 10 AWG cordset
Protection : 16A resettable fuse or 16A hydraulic MCB x 2
Circuit A : Output 12A max., US #1-16
Circuit B : Output 12A max., US #17-32
Weight : Net 15.86 Lb / Gross 20.10 Lb

PDU Feed	Code
Bottom	B
Top	T



NEMA L5-30P

30A model :	Circuit Protection
V32US-30A-MD/ F _L530/3 B -1	Resettable Fuse x 2
V32US-30A-MD/ CR _L530/3 T -1	1-pole MCB x 2

Input Rating : 30Amp, 110V
Cordset : 10 feet UL SJT 10 AWG cordset
Protection : 16A resettable fuse or 16A hydraulic MCB x 2
Circuit A : Output 12A max., US #1-16
Circuit B : Output 12A max., US #17-32
Weight : Net 18.00 Lb / Gross 22.24 Lb

Chassis Color	Code
Black	1
White	2
Red	3
Blue	4
Green	5
Orange	6
Yellow	7
Purple	8



NEMA 5-20P

20A model :	Circuit Protection
V32US-20A-MD/ F _520/3 B -1	Resettable Fuse x 1
V32US-20A-MD/ CR _520/3 T -1	1-pole MCB x 1

Input Rating : 20Amp, 110V
Cordset : 10 feet UL SJT 12 AWG cordset
Protection : 20A resettable fuse or 20A hydraulic MCB x 1
Circuit : Output 16A max., US #1-32
Weight : Net 14.85 Lb / Gross 19.10 Lb



NEMA L5-20P

20A model :	Circuit Protection
V32US-20A-MD/ F _L520/3 B -1	Resettable Fuse x 1
V32US-20A-MD/ CR _L520/3 T -1	1-pole MCB x 1

Input Rating : 20Amp, 110V
Cordset : 10 feet UL SJT 12 AWG cordset
Protection : 20A resettable fuse or 20A hydraulic MCB x 1
Circuit : Output 16A max., US #1-32
Weight : Net 14.97 Lb / Gross 19.21 Lb



NEMA 5-15P

15A model :	Circuit Protection
V32US-15A-MD/ F _515/3 B -1	Resettable Fuse x 1
V32US-15A-MD/ CR _515/3 T -1	1-pole MCB x 1

Input Rating : 15Amp, 110V
Cordset : 10 feet UL SJT 14 AWG cordset
Protection : 16A resettable fuse or 16A hydraulic MCB x 1
Circuit : Output 12A max., US #1-32
Weight : Net 14.43 Lb / Gross 18.67 Lb



Remarks : To comply with UL® / National Electrical Code (NEC), the branch circuit Amp has been de-rated to 80% of the original.

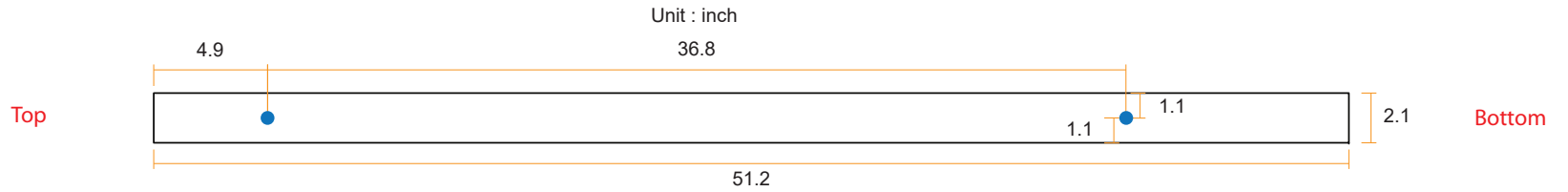
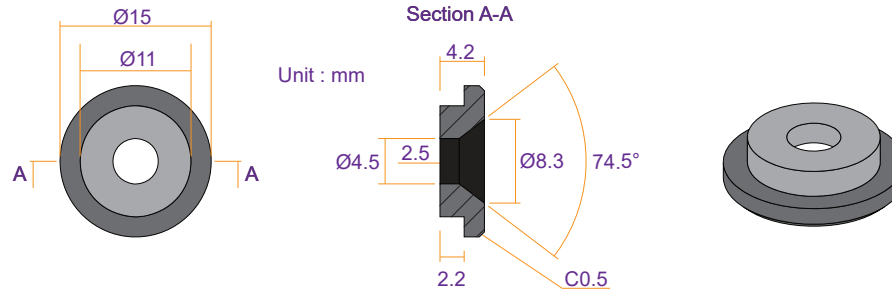
Operating Temperature : -5 to 60 °C
Storage Temperature : -25 to 65 °C
Operating Altitude : 0 to 2,000 m
Storage Altitude : 0 to 15,000 m
Humidity : 8 to 95% RH, non-condensing

Meter Features (MD metered PDU)
Local Display : 3-digit LED ammeter measuring input load current
Measurement : Current (A)
Accuracy : ± (3% of the reading + 5 digits) RMS



EMC Compliance : FCC Part 15 Subpart B (Class A)
Safety Compliance : Tested to UL60730-1:2016 and CAN/CSA-E60730-1:2015
Tested to UL62368-1:2014 and CAN/CSA-C22.2 No.62368-1:2014
Environment Compliance : RoHS3 & REACH

VMS Mounting Button

 **x 2** +  **x 2**
M4 Screw
 - Flat head
 - M4x8mm
PEG



VMB Mounting Bracket

 **x 4** +  **x 2**
M3.2 Screw
 - Flat head
 - M3.2x6mm
Bracket

