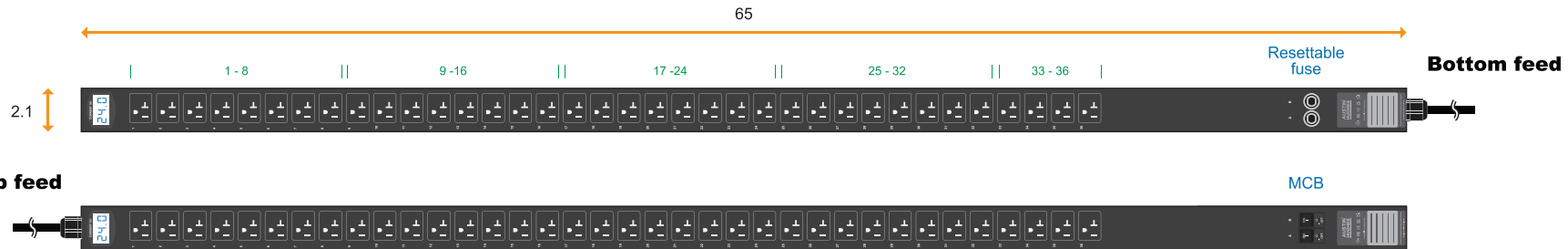


# 1-Phase metered PDU specification drawing

110V 15A / 20A / 30A PDU : US x 36

unit : inch



Circuit Protection	Code
Fuse	<b>F</b>
MCB	<b>CR</b>

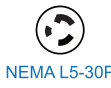


NEMA 5-30P

30A model :	Circuit Protection
V36US-30A-MD/ <b>F</b> _530/3 <b>B</b> -1	Resettable Fuse x 2
V36US-30A-MD/ <b>CR</b> _530/3 <b>T</b> -1	1-pole MCB x 2

Input Rating : 30Amp, 110V  
Cordset : 10 feet UL SJT 10 AWG cordset  
Protection : 16A resettable fuse or 16A hydraulic MCB x 2  
Circuit A : Output 12A max., US #1-18  
Circuit B : Output 12A max., US #19-36  
Weight : Net 16.00 Lb / Gross 20.24 Lb

PDU Feed	Code
Bottom	<b>B</b>
Top	<b>T</b>



NEMA L5-30P

30A model :	Circuit Protection
V36US-30A-MD/ <b>F</b> _L530/3 <b>B</b> -1	Resettable Fuse x 2
V36US-30A-MD/ <b>CR</b> _L530/3 <b>T</b> -1	1-pole MCB x 2

Input Rating : 30Amp, 110V  
Cordset : 10 feet UL SJT 10 AWG cordset  
Protection : 16A resettable fuse or 16A hydraulic MCB x 2  
Circuit A : Output 12A max., US #1-18  
Circuit B : Output 12A max., US #19-36  
Weight : Net 18.14 Lb / Gross 22.38 Lb

Chassis Color	Code
Black	<b>1</b>
White	<b>2</b>
Red	<b>3</b>
Blue	<b>4</b>
Green	<b>5</b>
Orange	<b>6</b>
Yellow	<b>7</b>
Purple	<b>8</b>



NEMA 5-20P

20A model :	Circuit Protection
V36US-20A-MD/ <b>F</b> _520/3 <b>B</b> -1	Resettable Fuse x 1
V36US-20A-MD/ <b>CR</b> _520/3 <b>T</b> -1	1-pole MCB x 1

Input Rating : 20Amp, 110V  
Cordset : 10 feet UL SJT 12 AWG cordset  
Protection : 20A resettable fuse or 20A hydraulic MCB x 1  
Circuit : Output 16A max., US #1-36  
Weight : Net 15.00 Lb / Gross 19.24 Lb



NEMA L5-20P

20A model :	Circuit Protection
V36US-20A-MD/ <b>F</b> _L520/3 <b>B</b> -1	Resettable Fuse x 1
V36US-20A-MD/ <b>CR</b> _L520/3 <b>T</b> -1	1-pole MCB x 1

Input Rating : 20Amp, 110V  
Cordset : 10 feet UL SJT 12 AWG cordset  
Protection : 20A resettable fuse or 20A hydraulic MCB x 1  
Circuit : Output 16A max., US #1-36  
Weight : Net 15.11 Lb / Gross 19.36 Lb



NEMA 5-15P

15A model :	Circuit Protection
V36US-15A-MD/ <b>F</b> _515/3 <b>B</b> -1	Resettable Fuse x 1
V36US-15A-MD/ <b>CR</b> _515/3 <b>T</b> -1	1-pole MCB x 1

Input Rating : 15Amp, 110V  
Cordset : 10 feet UL SJT 14 AWG cordset  
Protection : 16A resettable fuse or 16A hydraulic MCB x 1  
Circuit : Output 12A max., US #1-36  
Weight : Net 14.57 Lb / Gross 18.81 Lb

Remarks : To comply with UL® / National Electrical Code (NEC), the branch circuit Amp has been de-rated to 80% of the original.

Standard color: Black

Operating Temperature : -5 to 60 °C  
Storage Temperature : -25 to 65 °C  
Operating Altitude : 0 to 2,000 m  
Storage Altitude : 0 to 15,000 m  
Humidity : 8 to 95% RH, non-condensing

**Meter Features ( MD metered PDU )**  
Local Display : 3-digit LED ammeter measuring input load current  
Measurement : Current ( A )  
Accuracy : ± ( 3% of the reading + 5 digits ) RMS

EMC Compliance : FCC Part 15 Subpart B (Class A)  
Safety Compliance : Tested to UL60730-1:2016 and CAN/CSA-E60730-1:2015  
Tested to UL62368-1:2014 and CAN/CSA-C22.2 No.62368-1:2014  
Environment Compliance : RoHS3 & REACH



**AUSTIN HUGHES**  
Design. Manufacturing. Global Services.

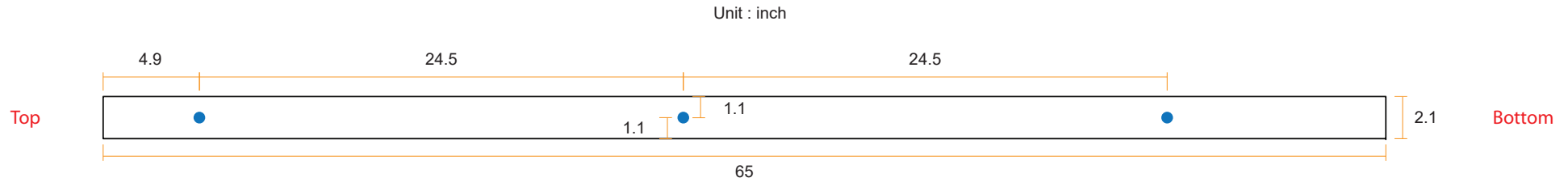
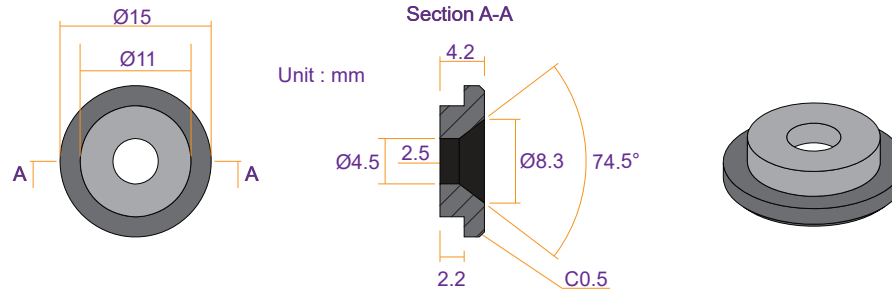
The company reserves the right to modify product specifications without prior notice and assumes no responsibility for any error which may appear in this publication.

Copyright 2023 Austin Hughes Electronics Ltd. All rights reserved.



Product Dimension : 2.1 (W) x 2.8 (D) x 65.0 (H) inch  
Packing Dimension ( for 2 PDUs ) : 4.3 (W) x 10.6 (D) x 80.4 (H) inch

### VMS Mounting Button

 **x 3** +  **x 3**  
**M4 Screw**  
 - Flat head  
 - M4x8mm  
**PEG**



### VMB Mounting Bracket

 **x 4** +  **x 2**  
**M3.2 Screw**  
 - Flat head  
 - M3.2x6mm  
**Bracket**

