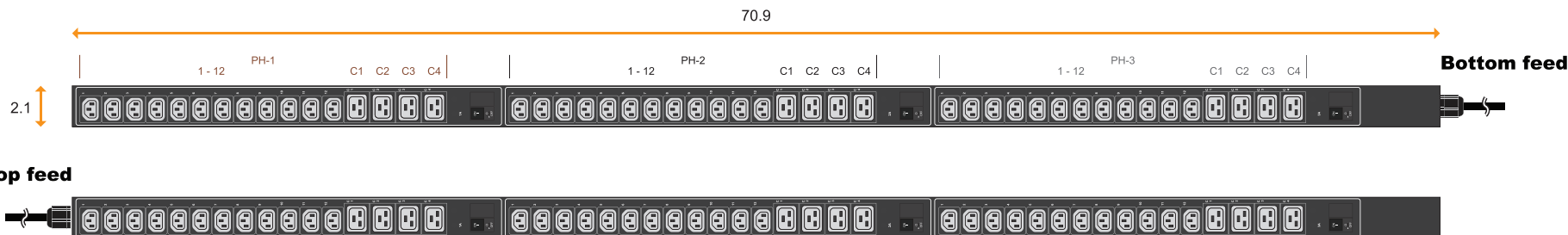


3-Phase basic PDU specification drawing

208V 20A / 30A PDU : C13 x 36 + C19 x 12

unit : inch



PDU Feed	Code
Bottom	B
Top	T

Chassis Color	Code
Black	1
White	2
Red	3
Blue	4
Green	5
Orange	6
Yellow	7
Purple	8

Standard color : Black



NEMA L15-20P

20A model :	Circuit Protection
VP36C13/12C19-20A/CR_L1520/2 B-1	2-pole MCB x 3



NEMA L21-20P

20A model :	Circuit Protection
VP36C13/12C19-20A/CR_L2120/2 B-1	2-pole MCB x 3



NEMA L15-30P

30A model :	Circuit Protection
VP36C13/12C19-30A/CR_L1530/2 B-1	2-pole MCB x 3



NEMA L21-30P

30A model :	Circuit Protection
VP36C13/12C19-30A/CR_L2130/2 B-1	2-pole MCB x 3

Input Rating : 20Amp (16A derated), 208V 3PH
Power Capacity : 5.8 kVA
Cordset : 4-wire 6.6ft UL SJT 12 AWG cordset
Protection : 20A 2-pole hydraulic MCB x 3
PH-1 : C13 #1-12 + C19 #C1-C4
PH-2 : C13 #1-12 + C19 #C1-C4
PH-3 : C13 #1-12 + C19 #C1-C4
Weight : -

Input Rating : 20Amp (16A derated), 208V 3PH
Power Capacity : 5.8 kVA
Cordset : 5-wire 6.6ft UL SJT 12 AWG cordset
Protection : 20A 2-pole hydraulic MCB x 3
PH-1 : C13 #1-12 + C19 #C1-C4
PH-2 : C13 #1-12 + C19 #C1-C4
PH-3 : C13 #1-12 + C19 #C1-C4
Weight : -

Input Rating : 30Amp (24A derated), 208V 3PH
Power Capacity : 8.7 kVA
Cordset : 4-wire 6.6ft UL SJT 10 AWG cordset
Protection : 20A 2-pole hydraulic MCB x 3
PH-1 : C13 #1-12 + C19 #C1-C4
PH-2 : C13 #1-12 + C19 #C1-C4
PH-3 : C13 #1-12 + C19 #C1-C4
Weight : -

Input Rating : 30Amp (24A derated), 208V 3PH
Power Capacity : 8.7 kVA
Cordset : 5-wire 6.6ft UL SJT 10 AWG cordset
Protection : 20A 2-pole hydraulic MCB x 3
PH-1 : C13 #1-12 + C19 #C1-C4
PH-2 : C13 #1-12 + C19 #C1-C4
PH-3 : C13 #1-12 + C19 #C1-C4
Weight : -

Operating Temperature : -5 to 60 °C
Storage Temperature : -25 to 65 °C
Operating Altitude : 0 to 2,000 m
Storage Altitude : 0 to 15,000 m
Humidity : 8 to 95% RH, non-condensing

EMC Compliance : FCC Part 15 Subpart B (Class A)
Safety Compliance : Tested to UL60730-1:2016 and CAN/CSA-E60730-1:2015
Tested to UL62368-1:2014 and CAN/CSA-C22.2 No.62368-1:2014
Environment Compliance : RoHS3 & REACH

AUSTIN HUGHES
Design. Manufacturing. Global Services.

The company reserves the right to modify product specifications without prior notice and assumes no responsibility for any error which may appear in this publication.

Copyright 2023 Austin Hughes Electronics Ltd. All rights reserved.

Product Dimension : 2.1 (W) x 2.8 (D) x 70.9 (H) inch
Packing dimension (for 2 PDUs) : 4.3 (W) x 10.6 (D) x 85.4 (H) inch

Lockable IEC Outlet

- Patented design for InfraPower PDU



C13 Outlet



C19 Outlet

Lockable IEC Cable

- Patented design of InfraPower PDU
- Low cost, easy to lock & secure
- Proprietary for lockable IEC outlet
- Applicable to standard IEC outlet
- 6 colors & 3 lengths available
- Custom color & length on request
- VDE & ENEC approval

C13 - C14

H05VV-F 3G 0.75mm²

Cable Color	0.5M	1M	2M
Black	✓	✓	✓
Grey	✓	✓	✓
Red	✓	✓	✓
Blue	✓	✓	✓
Green	✓	✓	✓
Orange	✓	✓	✓



C19 - C20

H05VV-F 3G 1.5mm²

Cable Color	1M	2M
Black	✓	✓
Grey	✓	✓
Red	✓	✓
Blue	✓	✓
Green	✓	✓
Orange	✓	✓



C13 - C14



lockable cable

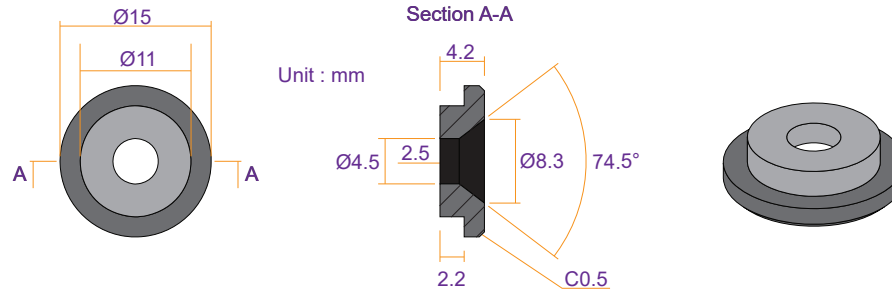
C19 - C20

- ✓ low cost
- ✓ easy to lock
- ✓ secure

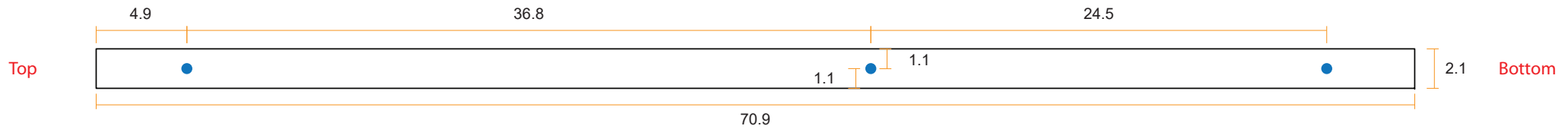


VMS Mounting Button



 **x 3** +  **x 3**
M4 Screw
 - Flat head
 - M4x8mm
PEG



Unit : inch



VMB Mounting Bracket

 **x 4** +  **x 2**
M3.2 Screw
 - Flat head
 - M3.2x6mm
Bracket

Unit : inch

