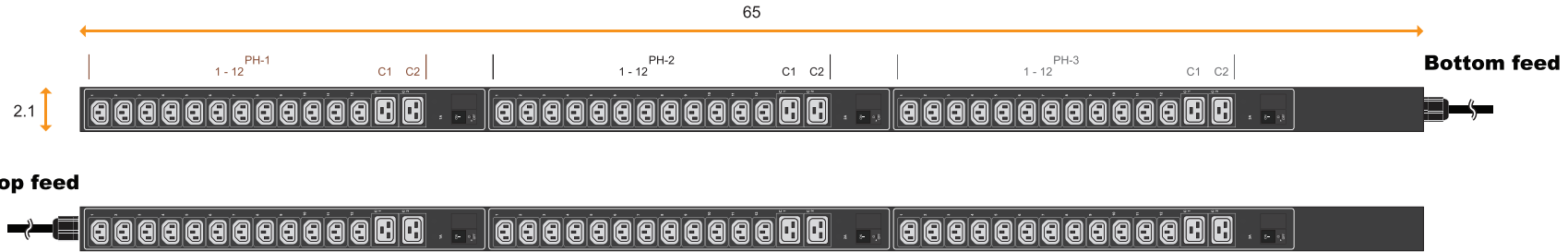


3-Phase basic PDU specification drawing

208V 20A / 30A PDU : C13 x 36 + C19 x 6

unit : inch



PDU Feed	Code
Bottom	B
Top	T

Chassis Color	Code
Black	1
White	2
Red	3
Blue	4
Green	5
Orange	6
Yellow	7
Purple	8

Standard color : Black



NEMA L15-20P

20A model :	Circuit Protection
VP36C13/6C19-20A/CR_L1520/2 B-1	2-pole MCB x 3



NEMA L21-20P

20A model :	Circuit Protection
VP36C13/6C19-20A/CR_L2120/2 B-1	2-pole MCB x 3



NEMA L15-30P

30A model :	Circuit Protection
VP36C13/6C19-30A/CR_L1530/2 B-1	2-pole MCB x 3



NEMA L21-30P

30A model :	Circuit Protection
VP36C13/6C19-30A/CR_L2130/2 B-1	2-pole MCB x 3

Input Rating : 20Amp (16A derated), 208V 3PH
Power Capacity : 5.8 kVA
Cordset : 4-wire 6.6ft UL SJT 12 AWG cordset
Protection : 20A 2-pole hydraulic MCB x 3
PH-1 : C13 #1-12 + C19 #C1-C2
PH-2 : C13 #1-12 + C19 #C1-C2
PH-3 : C13 #1-12 + C19 #C1-C2
Weight : Net 15.84 lb / Gross 18.04 lb

Input Rating : 20Amp (16A derated), 208V 3PH
Power Capacity : 5.8 kVA
Cordset : 5-wire 6.6ft UL SJT 12 AWG cordset
Protection : 20A 2-pole hydraulic MCB x 3
PH-1 : C13 #1-12 + C19 #C1-C2
PH-2 : C13 #1-12 + C19 #C1-C2
PH-3 : C13 #1-12 + C19 #C1-C2
Weight : Net 15.84 lb / Gross 18.04 lb

Input Rating : 30Amp (24A derated), 208V 3PH
Power Capacity : 8.7 kVA
Cordset : 4-wire 6.6ft UL SJT 10 AWG cordset
Protection : 20A 2-pole hydraulic MCB x 3
PH-1 : C13 #1-12 + C19 #C1-C2
PH-2 : C13 #1-12 + C19 #C1-C2
PH-3 : C13 #1-12 + C19 #C1-C2
Weight : Net 15.84 lb / Gross 18.04 lb

Input Rating : 30Amp (24A derated), 208V 3PH
Power Capacity : 8.7 kVA
Cordset : 5-wire 6.6ft UL SJT 10 AWG cordset
Protection : 20A 2-pole hydraulic MCB x 3
PH-1 : C13 #1-12 + C19 #C1-C2
PH-2 : C13 #1-12 + C19 #C1-C2
PH-3 : C13 #1-12 + C19 #C1-C2
Weight : Net 15.84 lb / Gross 18.04 lb

Operating Temperature : -5 to 60 °C
Storage Temperature : -25 to 65 °C
Operating Altitude : 0 to 2,000 m
Storage Altitude : 0 to 15,000 m
Humidity : 8 to 95% RH, non-condensing

EMC Compliance : FCC Part 15 Subpart B (Class A)
Safety Compliance : Tested to UL60730-1:2016 and CAN/CSA-E60730-1:2015
Tested to UL62368-1:2014 and CAN/CSA-C22.2 No.62368-1:2014
Environment Compliance : RoHS3 & REACH

Lockable IEC Outlet

- Patented design for InfraPower PDU



C13 Outlet



C19 Outlet

Lockable IEC Cable

- Patented design of InfraPower PDU
- Low cost, easy to lock & secure
- Proprietary for lockable IEC outlet
- Applicable to standard IEC outlet
- 6 colors & 3 lengths available
- Custom color & length on request
- VDE & ENEC approval

C13 - C14

H05VV-F 3G 0.75mm²

Cable Color	0.5M	1M	2M
Black	✓	✓	✓
Grey	✓	✓	✓
Red	✓	✓	✓
Blue	✓	✓	✓
Green	✓	✓	✓
Orange	✓	✓	✓



C19 - C20

H05VV-F 3G 1.5mm²

Cable Color	1M	2M
Black	✓	✓
Grey	✓	✓
Red	✓	✓
Blue	✓	✓
Green	✓	✓
Orange	✓	✓



C13 - C14



lockable cable

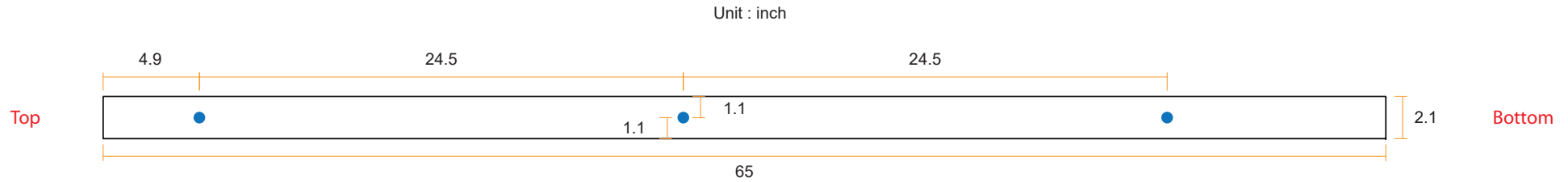
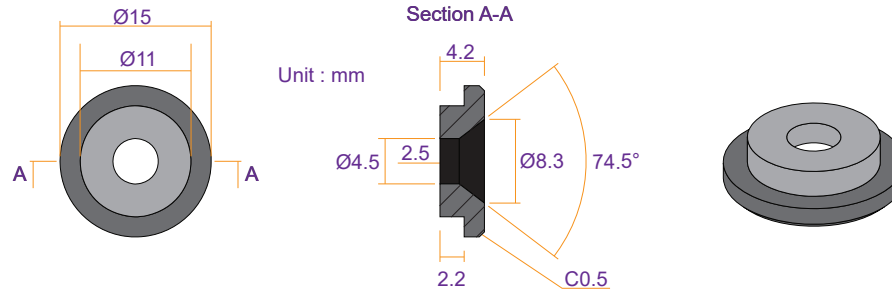
C19 - C20

- ✓ low cost
- ✓ easy to lock
- ✓ secure





VMS Mounting Button

 **x 3** +  **x 3**
M4 Screw
 - Flat head
 - M4x8mm
PEG



VMB Mounting Bracket

 **x 4** +  **x 2**
M3.2 Screw
 - Flat head
 - M3.2x6mm
Bracket

