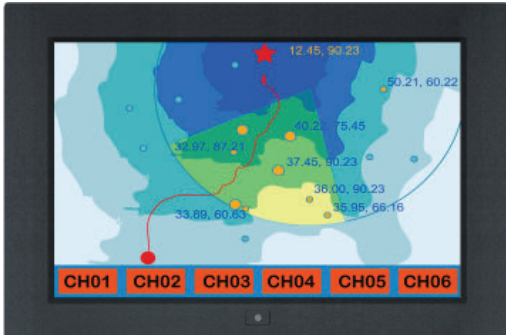


## User Manual 19" Widescreen LED-backlit LCD



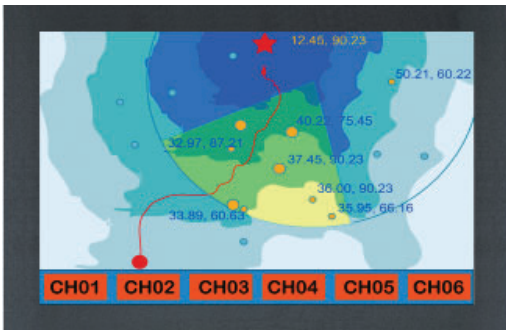
**AP-W19 / HAP-W19**

Aluminum front bezel



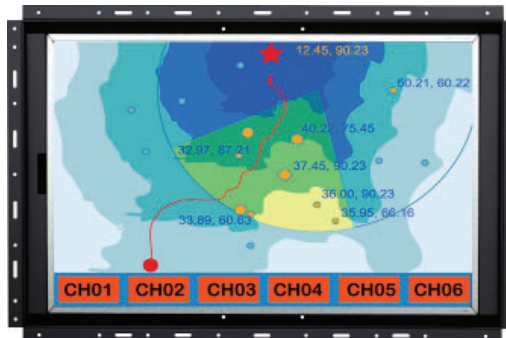
**NAP-W19 / HNAP-W19**

Front NEMA4 / IP65



**DP-W19 / HDP-W19**

Aluminum Front Panel



**OP-W19 / HOP-W19**

Universal Mounting Open Frame



REACH

Designed and manufactured by Austin Hughes

## Legal Information

First English printing, January 2024

Information in this document has been carefully checked for accuracy; however, no guarantee is given to the correctness of the contents. The information in this document is subject to change without notice. We are not liable for any injury or loss that results from the use of this equipment.

## Safety Instructions

**Please read all of these instructions carefully before you use the device. Save this manual for future reference.**

- Unplug equipment before cleaning. Don't use liquid or spray detergent; use a moist cloth.
- Keep equipment away from excessive humidity and heat. Preferably, keep it in an air-conditioned environment with temperatures not exceeding 40° Celsius (104° Fahrenheit).
- When installing, place the equipment on a sturdy, level surface to prevent it from accidentally falling and causing damage to other equipment or injury to persons nearby.
- When the equipment is in an open position, do not cover, block or in any way obstruct the gap between it and the power supply. Proper air convection is necessary to keep it from overheating.
- Arrange the equipment's power cord in such a way that others won't trip or fall over it.
- If you are using a power cord that didn't ship with the equipment, ensure that it is rated for the voltage and current labelled on the equipment's electrical ratings label. The voltage rating on the cord should be higher than the one listed on the equipment's ratings label.
- Observe all precautions and warnings attached to the equipment.
- If you don't intend on using the equipment for a long time, disconnect it from the power outlet to prevent being damaged by transient over-voltage.
- Keep all liquids away from the equipment to minimize the risk of accidental spillage. Liquid spilled on to the power supply or on other hardware may cause damage, fire or electrical shock.
- Only qualified service personnel should open the chassis. Opening it yourself could damage the equipment and invalidate its warranty.
- If any part of the equipment becomes damaged or stops functioning, have it checked by qualified service personnel.

## What the warranty does not cover

- Any product, on which the serial number has been defaced, modified or removed.
- Damage, deterioration or malfunction resulting from:
  - Accident, misuse, neglect, fire, water, lightning, or other acts of nature, unauthorized product modification, or failure to follow instructions supplied with the product.
  - Repair or attempted repair by anyone not authorized by us.
  - Any damage of the product due to shipment.
  - Removal or installation of the product.
  - Causes external to the product, such as electric power fluctuation or failure.
  - Use of supplies or parts not meeting our specifications.
  - Normal wear and tear.
  - Any other causes which does not relate to a product defect.
- Removal, installation, and set-up service charges.

## Regulatory Notices Federal Communications Commission (FCC)

This equipment has been tested and found to comply with the limits for a Class A digital device, pursuant to Part 15 of the FCC rules. These limits are designed to provide reasonable protection against harmful interference in business, industrial and commercial environments.

Any changes or modifications made to this equipment may void the user's authority to operate this equipment. This equipment generates, uses, and can radiate radio frequency energy and, if not installed and used in accordance with the instructions, may cause harmful interference to radio communications.

However, there is no guarantee that interference will not occur in a particular installation. If this equipment does cause harmful interference to radio or television reception, which can be determined by turning the equipment off and on, the user is encouraged to try to correct the interference by one or more of the following measures:

- Re-position or relocate the receiving antenna.
- Increase the separation between the equipment and receiver.
- Connect the equipment into an outlet on a circuit different from that to which the receiver is connected.

# Contents

## < Part. 1 > AP-W19 / NAP-W19 / HAP-W19 / HNAP-W19

- 1.1 Package Content P.1
- 1.2 Structure Diagram & Dimension P.2
- 1.3 Mounting Hardware & Installation P.4

## < Part. 2 > DP-W19 / HDP-W19

- 2.1 Package Content P.5
- 2.2 Structure Diagram & Dimension P.6
- 2.3 Mounting Hardware & Installation P.8

## < Part. 3 > OP-W19 / HOP-W19

- 3.1 Package Content P.9
- 3.2 Structure Diagram & Dimension P.10
- 3.3 Mounting Hardware & Installation P.12

## < Part. 4 > Specifications / OSD

- 4.1 Product Specifications P.14
- 4.2 On-screen Display Operation ( OSD ) P.17

## < Part. 5 > Options

- 5.1 Option Table P.20
- 5.2 3G / HD / SD-**SDI** Broadcast-grade input P.21
- 5.3 **MCS** Multi-display control solution P.22
- 5.4 Speaker, DVI-D, BNC P.23
- 5.5 Resistive ( 1-point touch ) P.24
- 5.6 DC Power : 12V / 24V / 48V / 125V P.26
- 5.7 TV ( Analog ) P.27
- 5.8 Remote Controller ( RC-2 ) P.28
- 5.9 Sunlight Readable : Auto Dimming P.29

## < Part. 6 > Ultraview Family

- 6.1 W19 P.30

## Before Installation

- It is very important to mount the equipment in a suitable cabinet or on a stable surface.
- Make sure the place has a good ventilation, is out of direct sunlight, away from sources of excessive dust, dirt, heat, water, moisture and vibration.

## Unpacking

The equipment comes with the standard parts shown in package content. Check and make sure they are included and in good condition. If anything is missing, or damaged, contact the supplier immediately.

## How To Clean Your LCD Monitor

### Caution :

- To avoid the risk of electric shock, make sure your hands are dry before unplugging your monitor from or plugging your monitor into an electrical outlet.
- When you clean your monitor, do not press down on the LCD screen. Pressing down on the screen can scratch or damage your display. Pressure damage is not covered under warranty.
- Use only cleansers made specifically for cleaning monitors and monitor screens. Cleansers not made to clean monitors and monitor screens can scratch the LCD display or strip off the finish.
- Do not spray any kind of liquid directly onto the screen or case of your monitor. Spraying liquids directly onto the screen or case can cause damage which is not covered under warranty.
- Do not use paper towels or abrasive pads to clean your monitor. Using an abrasive pad or any wood based paper product such as paper towels can scratch your LCD screen.

## Cleaning Your Monitor

To clean your LCD safely, please follow these steps :

Disconnect the power cord.

Gently wipe the surface using a clean, dry microfiber cloth. Use as little pressure as possible.

## Cleaning Tough Marks and Smudges

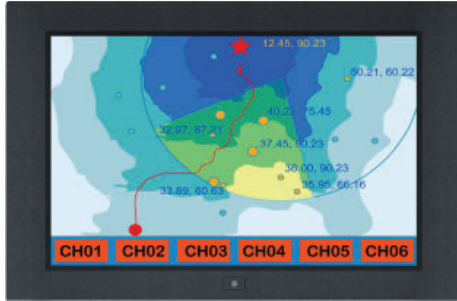
To remove tough marks and smudges, please follow these steps :

- ① Disconnect the power cord.
- ② Spray a small amount of non-abrasive cleanser on a microfiber cloth.

**Caution : Do not spray or apply any liquids directly onto the monitor. Always apply the solution to your microfiber cloth first, not directly on the parts you are cleaning.**

- ③ Gently wipe the surface. Use as little pressure as possible.
- ④ Wait until your monitor is completely dry before plugging it in and powering it up.

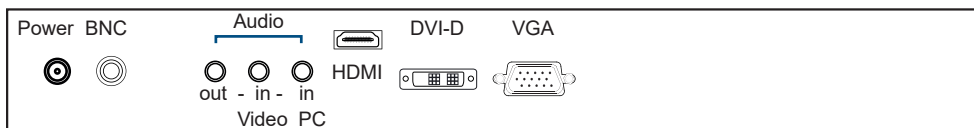
**AP-W19 / NAP-W19  
HAP-W19 / HNAP-W19**



- 19" Widescreen LCD display X 1
- 6ft VGA cable X 1
- Power adapter X 1
- Power cord X 1

**Mounting hardware X 1 pack**

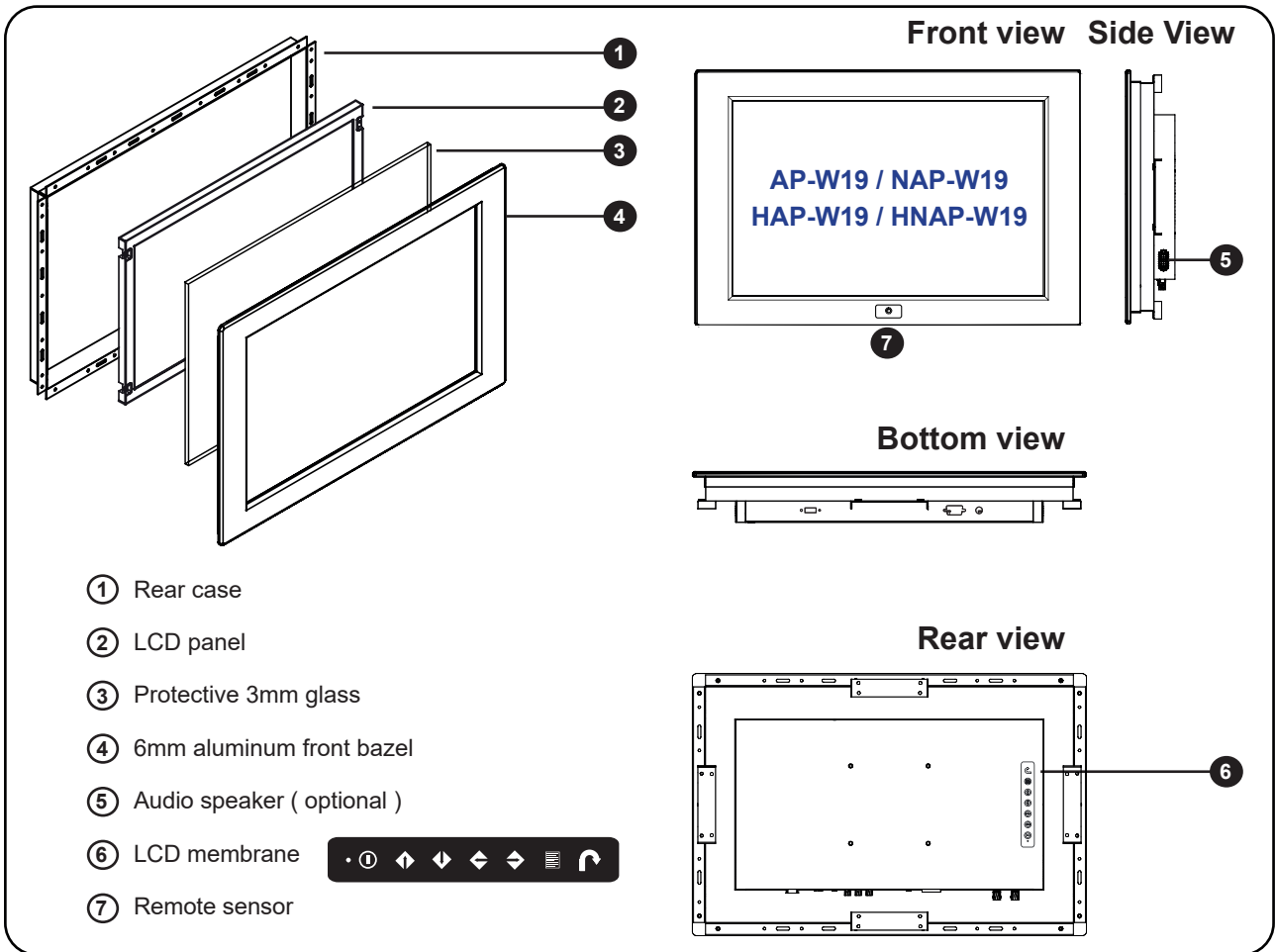
- Mounting bracket x 4 pcs
- M4\* 6mm screw x 8 pcs
- M4\* 50mm screw x 8 pcs



**Options :**

- Basic I/O** : HDMI + VGA
- Speaker** : HDMI + VGA + Speaker
- BNC** : HDMI + VGA + BNC + Audio input + Speaker
- DVI-D** : HDMI + VGA + DVI-D + Audio input & output + Speaker
- Options** : SDI, MCS, USB for touchscreen & DC power

## < 1.2 > Structure Diagram

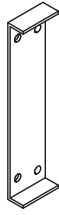


| Model                                    | Product Dimension<br>(W x D x H)                | Packing Dimension<br>(W x D x H)           | Net Weight      | Gross Weight   |
|--|---|--|-----------------|----------------|
| AP-W19<br>NAP-W19<br>HAP-W19<br>HNAP-W19 | 508.5 x 65.6 x 338.1 mm<br>20 x 2.6 x 13.3 inch | 662 x 115 x 533 mm<br>26.1 x 4.5 x 21 inch | 7 kg<br>15.4 lb | 10 kg<br>22 lb |



## < 1.3 > Installation ( I ) Panel mount

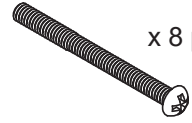
1 Mounting bracket  
x 4 pcs



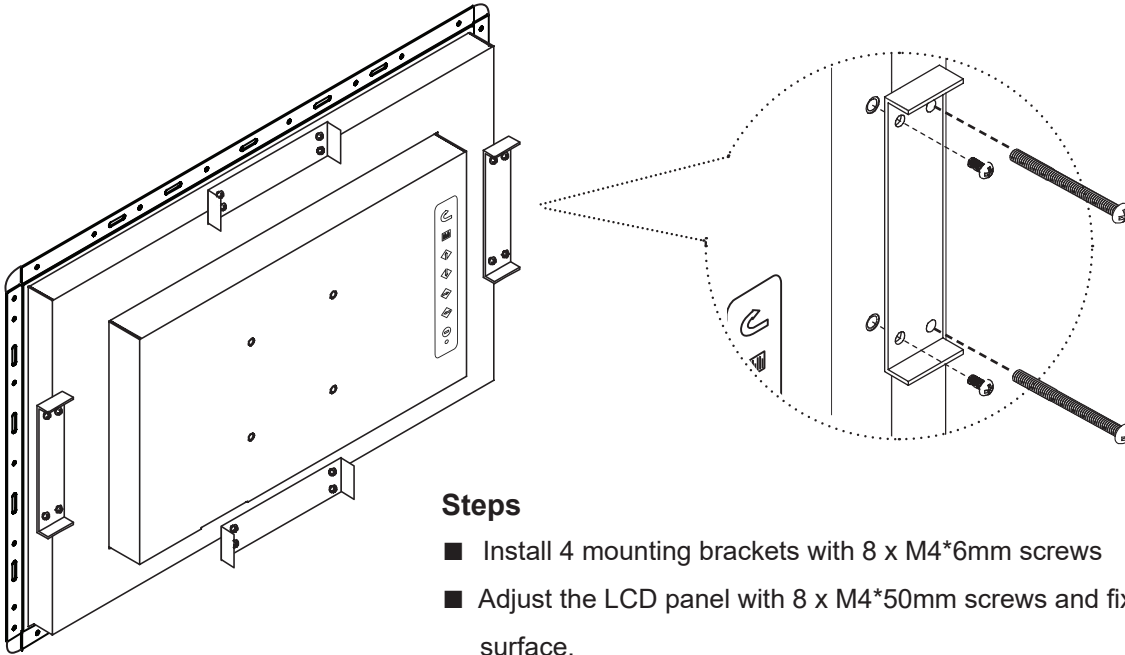
2 M4\*6mm screw  
x 8 pcs



3 M4\*50mm screw  
x 8 pcs



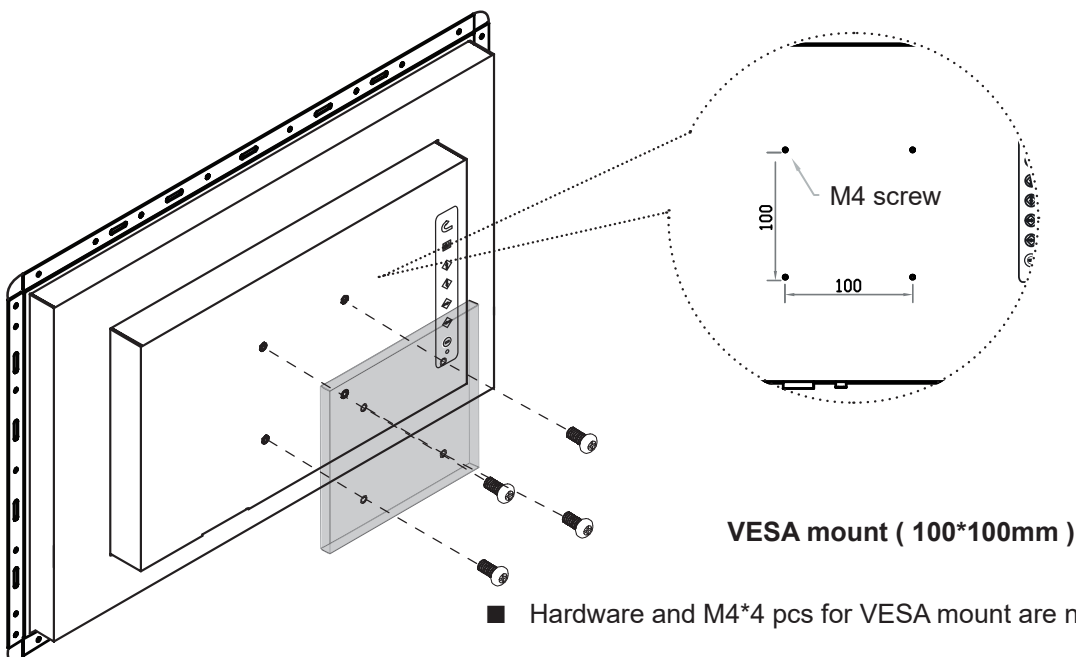
Hardware set part no. UV-BK#2



### Steps

- Install 4 mounting brackets with 8 x M4\*6mm screws
- Adjust the LCD panel with 8 x M4\*50mm screws and fix it on the surface.

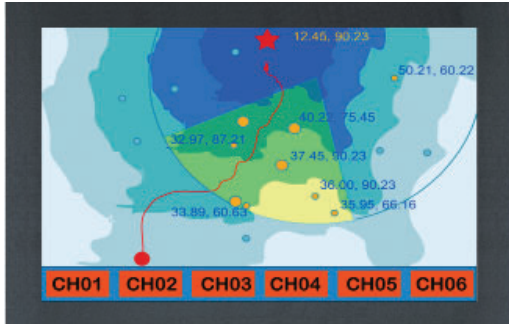
## ( II ) VESA mount ( 100\*100mm )



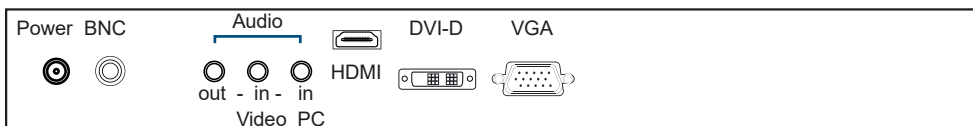
- Hardware and M4\*4 pcs for VESA mount are not provided



**DP-W19 / HDP-W19**



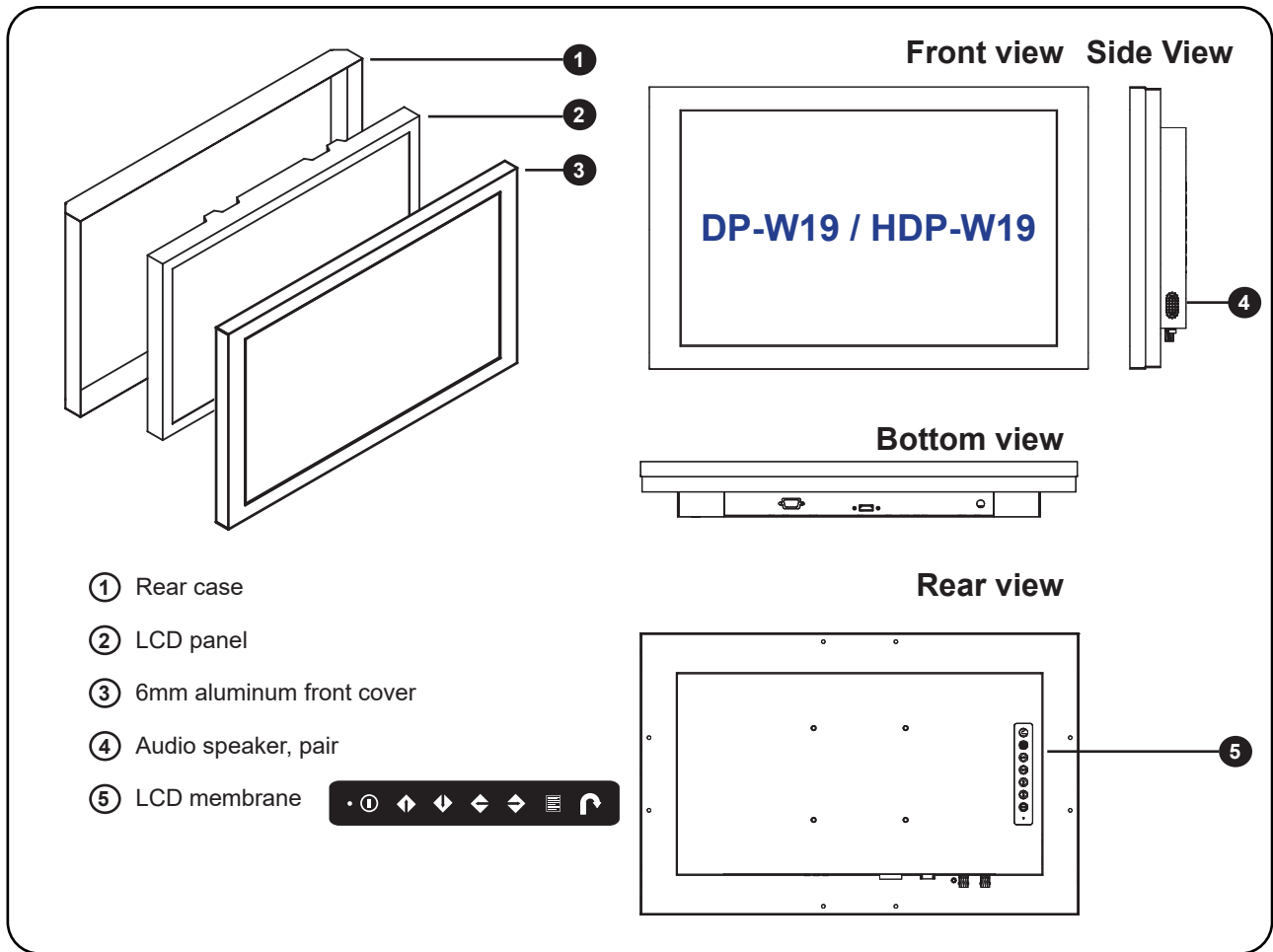
- 19" Widescreen LCD display X 1
- 6ft VGA cable X 1
- Power adapter X 1
- Power cord X 1



**Options :**

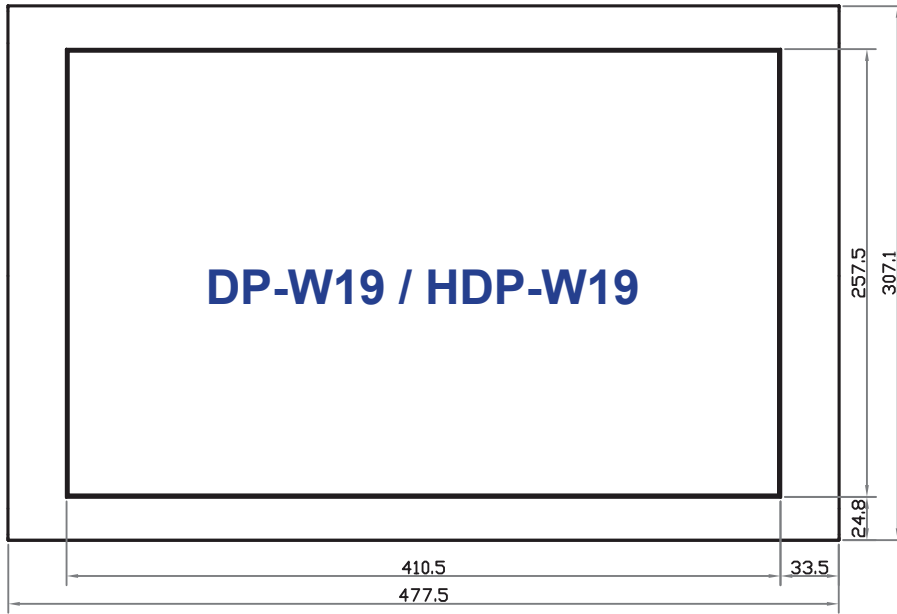
- Basic I/O** : HDMI + VGA
- Speaker** : HDMI + VGA + Speaker
- BNC** : HDMI + VGA + BNC + Audio input + Speaker
- DVI-D** : HDMI + VGA + DVI-D + Audio input & output + Speaker
- Options** : SDI, MCS, USB for touchscreen & DC power

## < 2.2 > Structure Diagram

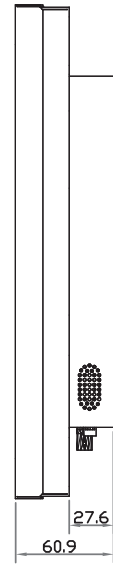


| Model                           | Product Dimension<br>(W x D x H)                  | Packing Dimension<br>(W x D x H)           | Net Weight        | Gross Weight      |
|---------------------------------|---|--|-------------------|-------------------|
| <b>DP-W19</b><br><b>HDP-W19</b> | 477.5 x 60.9 x 307.1 mm<br>18.8 x 2.4 x 12.1 inch | 662 x 115 x 533 mm<br>26.1 x 4.5 x 21 inch | 6.3 kg<br>13.9 lb | 9.2 kg<br>20.2 lb |

Front View

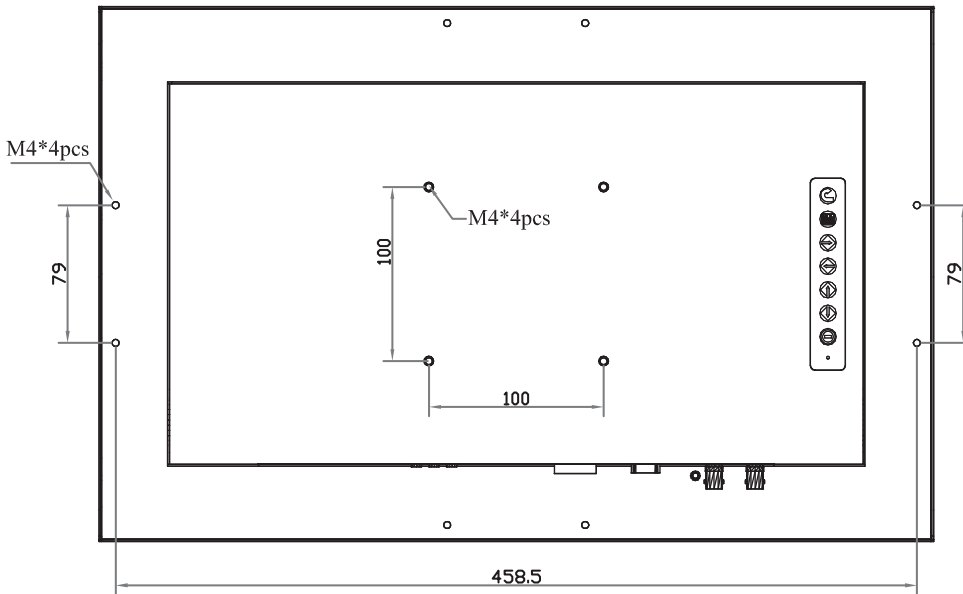


Side View

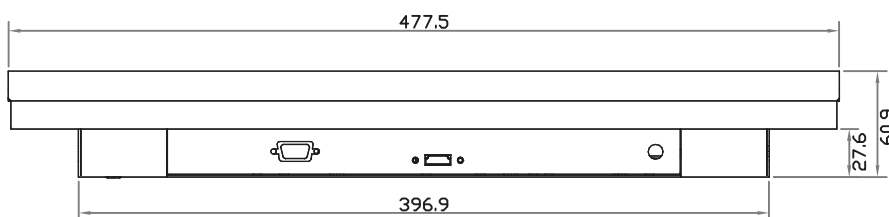


UNIT : mm  
1mm = 0.03937 inch

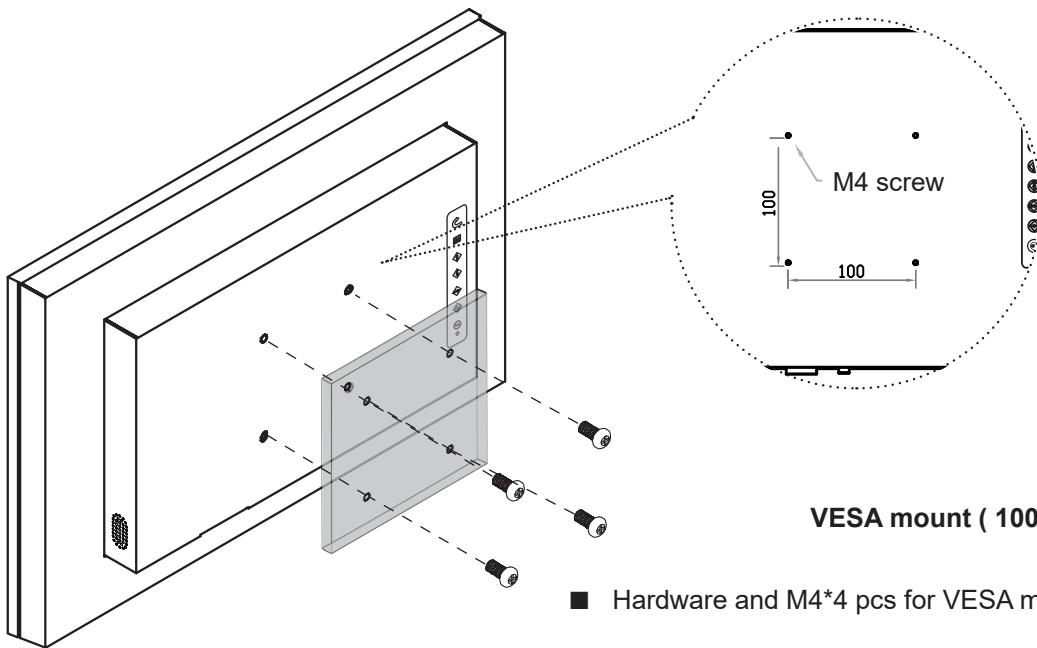
Rear View



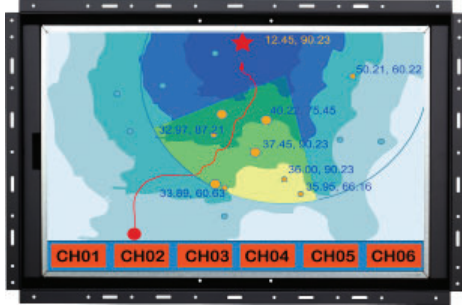
Bottom View



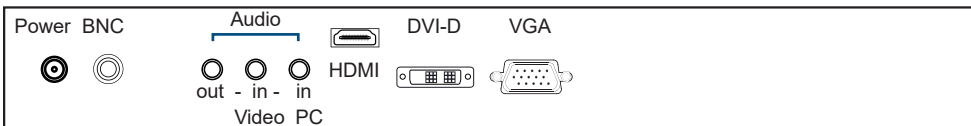
## < 2.3 > VESA mount Installation - DP / HDP



**OP-W19 / HOP-W19**



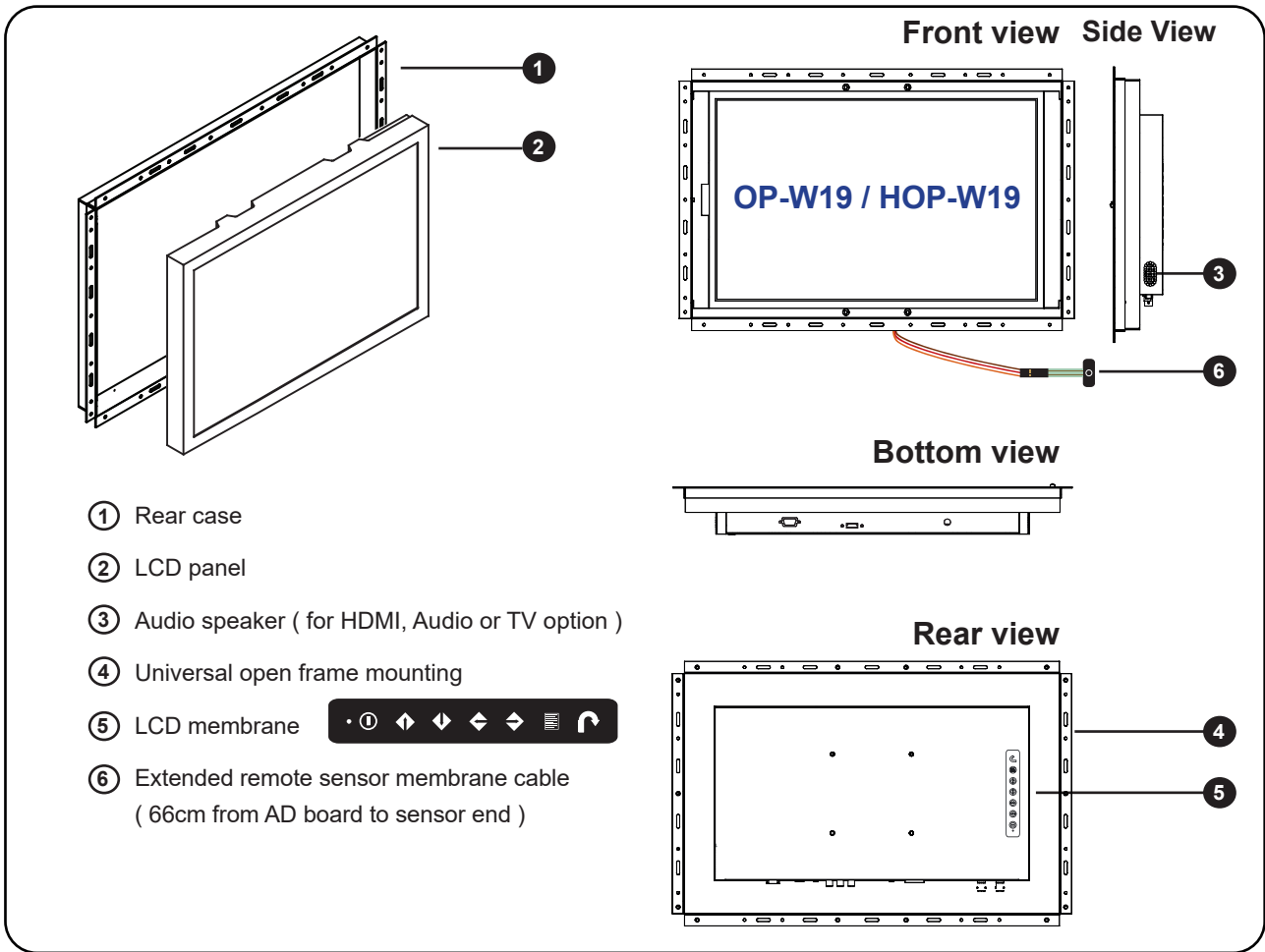
- 19" Widescreen LCD display X 1
- 6ft VGA cable X 1
- Power adapter X 1
- Power cord X 1



**Options :**

- Basic I/O** : HDMI + VGA
- Speaker** : HDMI + VGA + Speaker
- BNC** : HDMI + VGA + BNC + Audio input + Speaker
- DVI-D** : HDMI + VGA + DVI-D + Audio input & output + Speaker
- Options** : SDI, MCS, USB for touchscreen & DC power

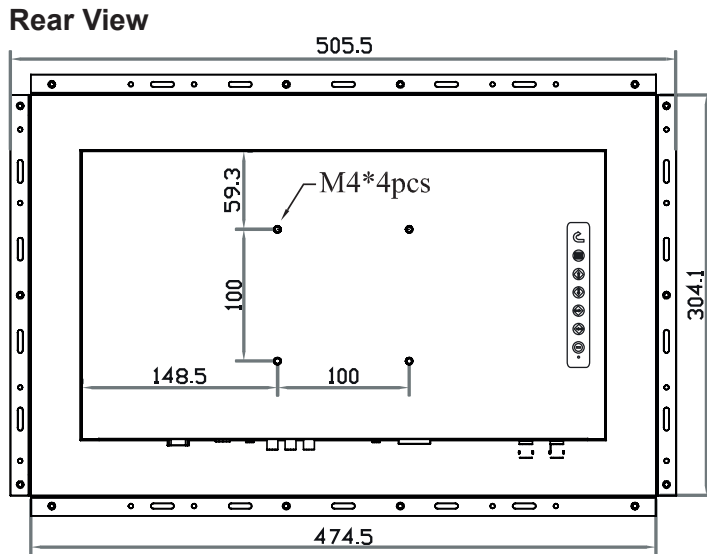
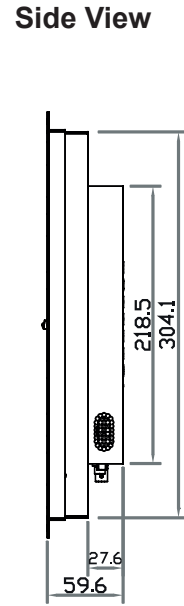
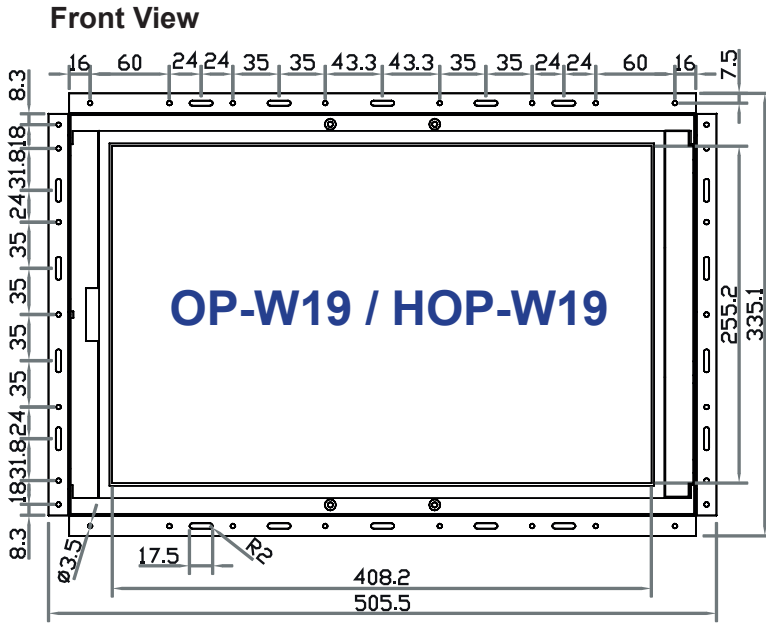
## < 3.2 > Structure Diagram



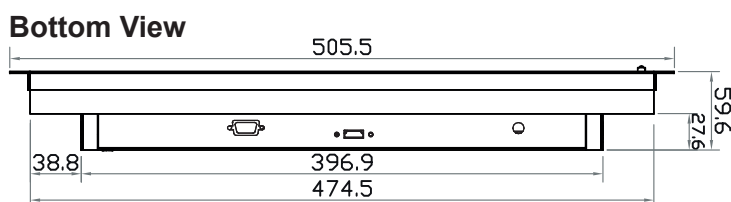
| Model                           | Product Dimension<br>(W x D x H)                  | Packing Dimension<br>(W x D x H)           | Net Weight        | Gross Weight      |
|---------------------------------|---|--|-------------------|-------------------|
| <b>OP-W19</b><br><b>HOP-W19</b> | 505.5 x 59.6 x 335.1 mm<br>19.9 x 2.3 x 13.2 inch | 662 x 115 x 533 mm<br>26.1 x 4.5 x 21 inch | 5.5 kg<br>12.1 lb | 8.4 kg<br>18.5 lb |

### < 3.2 > Dimension

### 19" Widescreen Display

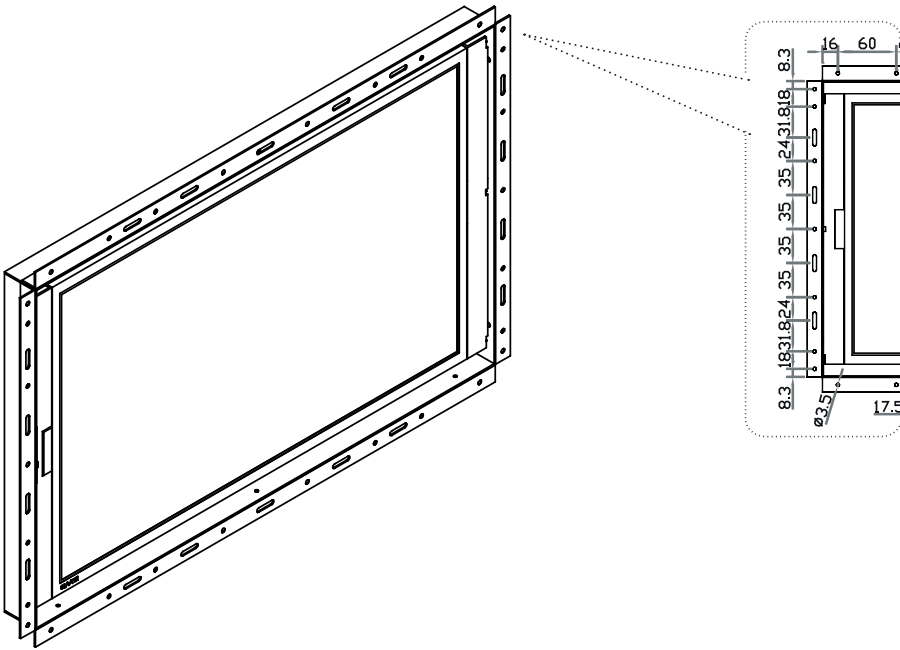


UNIT : mm  
1mm = 0.03937 inch

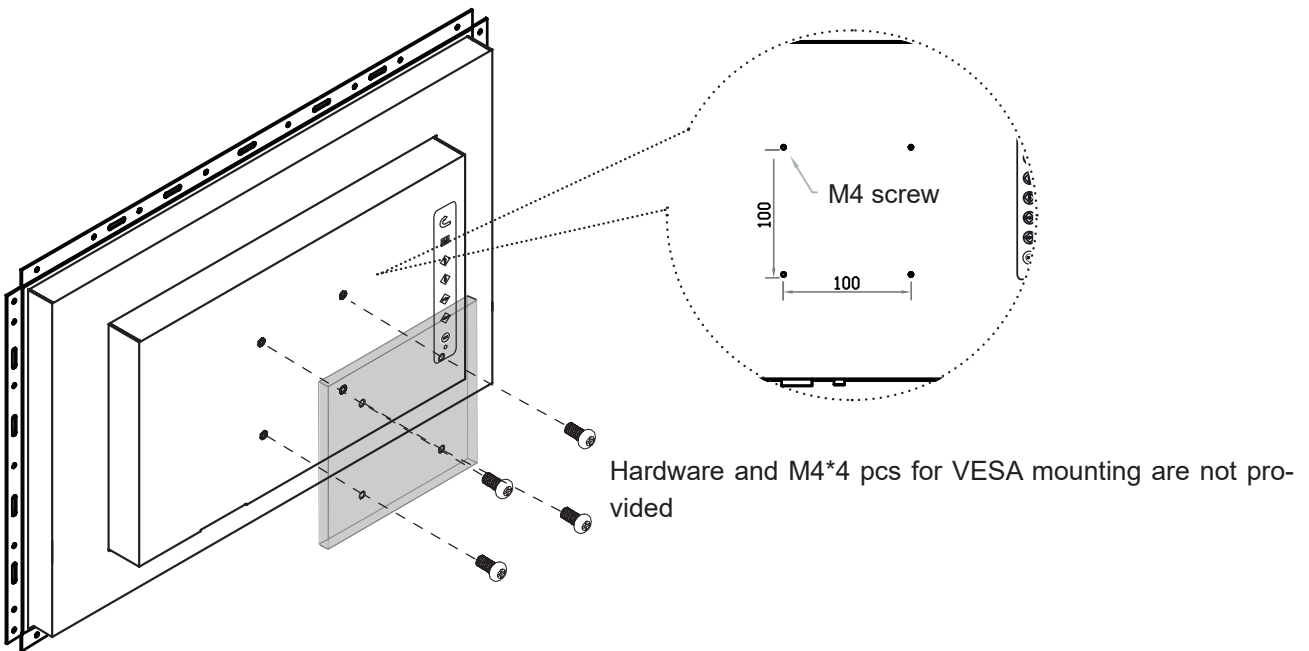


## < 3.3 > Installation

### ( I ) Universal mount



### ( II ) VESA mount ( 100\*100mm )





# Intentionally Left Blank

## < Part 4 >

### < 4.1 > Product Specifications

| Mechanical Design | AP-W19 / HAP-W19 | NAP-W19 / HNAP-W19 | DP-W19 / HDP-W19 | OP-W19 / HOP-W19 |
|-------------------|------------------|--------------------|------------------|------------------|
| Protection        | 6mm front bezel  | NEMA 4 / IP65      | front cover      | open frame       |
| Front Panel       | Black, RAL 9005  |                    |                  | -                |
| Rear Casing       | Black, RAL 9005  |                    |                  |                  |
| VESA mount        | 100 x 100 mm     |                    |                  |                  |
| Universal mount   | -                | -                  | -                | ready            |
| Desktop stand     | option           | option             | option           | -                |
| Panel mount       | bundled          | -                  | -                | -                |

| LED-backlit LCD Panel            | Standard              | Sunlight Readable      |
|----------------------------------|-----------------------|------------------------|
| Brightness ( cd/m <sup>2</sup> ) | 250                   | 1000 <sup>***</sup>    |
| Viewing Angle ( L/R/U/D )        | 85/85/80/80           | 80/80/80/80            |
| Surface treatment                | Anti-glare            | Haze 25%, Hard-coating |
| MTBF ( hrs )                     | 30,000                | 50,000                 |
| Colors                           | 16.7 M, 8-bit         | 16.7 M                 |
| Panel Size ( diagonal )          | 19-inch TFT color LCD |                        |
| Native resolution                | 1440 x 900            |                        |
| Contrast Ratio ( typ. )          | 1000 : 1              |                        |
| Response Time ( ms )             | 5                     |                        |
| Dot pitch ( mm )                 | 0.2835                |                        |
| Display Area ( mm )              | 408.24H x 255.15V     |                        |
| Surface hardness                 | 3H                    |                        |
| Backlight Type                   | LED                   |                        |

| Video             |                     |
|-------------------|---------------------|
| VGA               | Analog 0.7Vp-p      |
| DVI               | DVI-D single link   |
| HDMI              | HDMI 1.4 / HDCP 1.4 |
| Composite ( BNC ) | NTSC & PAL          |

| Audio Option             |                   |
|--------------------------|-------------------|
| Input                    |                   |
| Connector                | 3.5mm stereo jack |
| Impedance / Power level  | 30kΩ / 750mV      |
| Output                   |                   |
| Connector                | 3.5mm stereo jack |
| Resistance / Power level | 30kΩ / 2.8V       |
| Speaker:                 |                   |
| Dual Stereo              | 2W x 2            |

\*When the audio output is connected, speaker output is OFF

| Power             | Standard                              | Sunlight Readable |
|-------------------|---------------------------------------|-------------------|
| Input             | Auto-sensing 100 to 240VAC, 50 / 60Hz |                   |
| Consumption:      |                                       |                   |
| Screen ON         | Max. 20W                              | Max. 34W          |
| Power saving mode | Max. 2W                               | Max. 2W           |
| Power button OFF  | Max. 1W                               | Max. 1W           |

| Compliance  |                      |
|-------------|----------------------|
| EMC         | FCC & CE             |
| Safety      | CE / LVD & UKCA      |
| Environment | RoHS3 & REACH / WEEE |

## < 4.1 > Product Specifications

## 19" Widescreen Display

| Environmental Conditions |             |                                    |
|--------------------------|-------------|------------------------------------|
| Operating                | Temperature | 0 to 55°C degree                   |
|                          | Humidity    | 10~90%, non-condensing             |
|                          | Altitude    | 16,000 ft                          |
| Storage / Non-operating  | Temperature | -20 to 60°C degree                 |
|                          | Humidity    | 5~90%, non-condensing              |
|                          | Altitude    | 40,000 ft                          |
|                          | Shock       | 10G acceleration ( 11ms duration ) |
|                          | Vibration   | 10~300Hz 0.5G RMS random vibration |

| Physical Specification | AP-W19 / HAP-W19     | NAP-W19 / HNAP-W19 | DP-W19 / HDP-W19     | OP-W19 / HOP-W19     |
|------------------------|----------------------|--------------------|----------------------|----------------------|
| Product ( W x D x H )  |                      |                    |                      |                      |
| mm                     | 508.5 x 65.6 x 338.1 |                    | 477.5 x 60.9 x 307.1 | 505.5 x 59.6 x 335.1 |
| inch                   | 20 x 2.6 x 13.3      |                    | 18.8 x 2.4 x 12.1    | 19.9 x 2.3 x 13.2    |
| Packing ( W x D x H )  |                      |                    |                      |                      |
| mm                     | 662 x 115 x 533      |                    | 662 x 115 x 533      | 662 x 115 x 533      |
| inch                   | 26.1 x 4.5 x 21      |                    | 26.1 x 4.5 x 21      | 26.1 x 4.5 x 21      |
| Net Weight             | 7 kg / 15.4 lb       | 7 kg / 15.4 lb     | 6.3 kg / 13.9 lb     | 5.5 kg / 12.1 lb     |
| Gross Weight           | 10 kg / 22 lb        | 10 kg / 22 lb      | 9.2 kg / 20.2 lb     | 8.4 kg / 18.5 lb     |
| Chassis color          | Dark                 |                    |                      |                      |
| Chassis materials      | Aluminum             |                    |                      |                      |

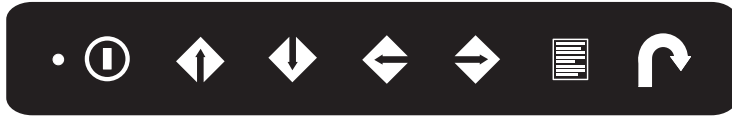
\* All dimensions stated are subject to change if options are selected / integrated to base model part codes




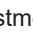

| Applicable Format |              |  |
|-------------------|--------------|--|
| DVI-D / VGA Input | PC Signal    | 1440 x 900 x 60Hz  |
|                   |              | 1280 x 1024 x 60 / 75Hz  |
|                   |              | 1280 x 960 x 60Hz  |
|                   |              | 1280 x 768 x 60 / 75Hz   |
|                   |              | 1152 x 864 x 75Hz  |
|                   |              | 1024 x 768 x 60 / 70 / 75Hz  |
|                   |              | 848 x 480 x 60Hz   |
|                   |              | 800 x 600 x 60 / 72 / 75Hz   |
|                   |              | 720 x 400 x 70Hz   |
|                   |              | 640 x 480 x 60 / 72 / 75Hz   |
|                   |              | 640 x 400 x 70Hz   |
|                   |              | 640 x 350 x 70Hz   |
|                   | Audio Signal | 2ch Linear PCM   |
| HDMI Input        | PC Signal    | Same as VGA  |
|                   | HDMI 1.3     | 1280 x 720 x 50 / 60Hz ( 720p )<br>720 x 480 x 50 / 60Hz ( 576p / 480p ) |
|                   | Audio Signal | 2ch Linear PCM   |

\* In some circumstances, if the user connects the LCD to PC via HDMI port for video and audio signals, the LCD may display incorrectly on a full screen. If so, please adjust the display card setting on display size to fix the issue.

Intentionally  
Left  
Blank

- Power light
- Green = On
- Orange = Power saving



| Membrane Switch   | Function  |
|---|---|
|  | Power on / off LCD  |
|  | Display the OSD menu  |
|  | Scrolls through menu options and adjusts the displayed control<br>(To auto adjustment by pressing the button  for 5 seconds) |
|  | Exit the OSD screen<br>Toggle analog, digital & video connection (DVI-D and video options only)   |

## < 4.2 > On-screen Display Operation ( OSD )

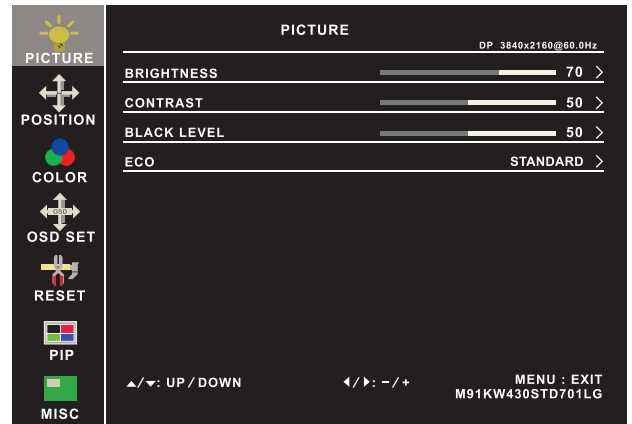
### ① Picture

Brightness : Adjust the screen brightness

Contrast : Adjust the difference between the image background ( black level ) and the foreground ( white level )

Black level : Adjust background black level of the screen

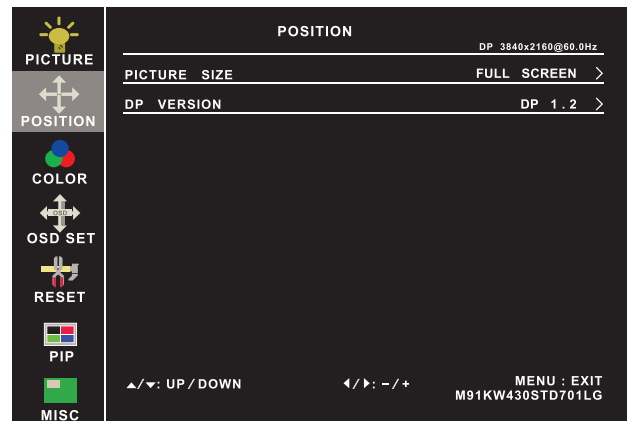
Eco : Screen in power saving mode



### ② Position

Picture size : Adjust the image size  
- Full Screen / 4:3 / 5:4 / Pixel to Pixel

DP version : Select the DP version



### ③ Color

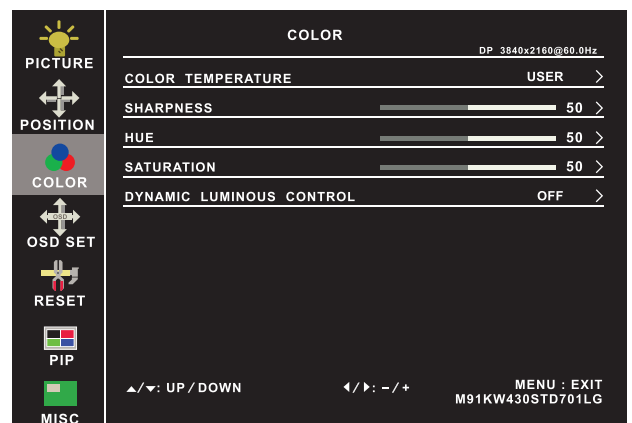
Color temperature : User / Warm / Cool / 5400k mode and Red / Green / Blue color balance

Sharpness : Adjust the image from weak to sharp

Hue : Adjust the screen hue value

Saturation : Adjust the saturation of the image color

Dynamic luminous control : Control the dynamic brightness



### ④ OSD Set

Language : Select the language in which the OSD menu is displayed - English

OSD H-Position : Align the screen image left or right

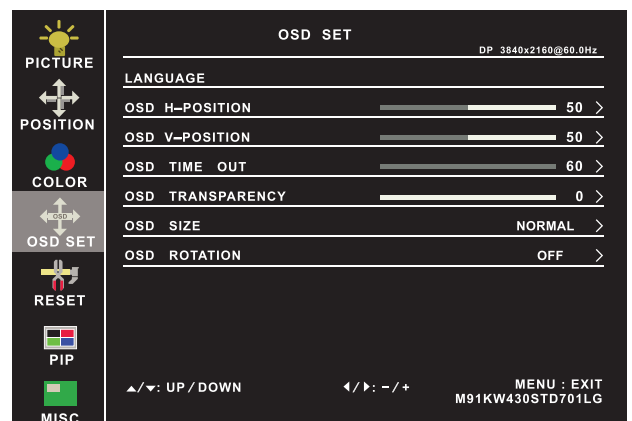
OSD V-Position : Align the screen image up or down

OSD time out : Adjust the screen timeout

OSD transparency : Adjust the screen transparency

OSD size : Adjust the screen size - Normal / Small

OSD rotation : Rotate the screen - 90° / 180° / 270°

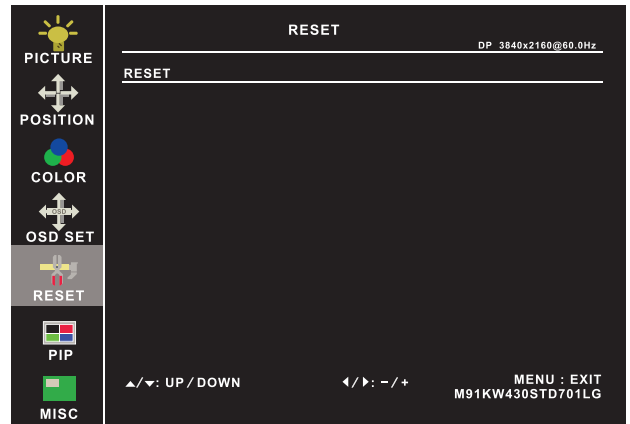


## < 4.2 > On-screen Display Operation ( OSD )

## 19" Widescreen Display

### ⑤ Reset

Reset : Return the adjustment back to factory setting



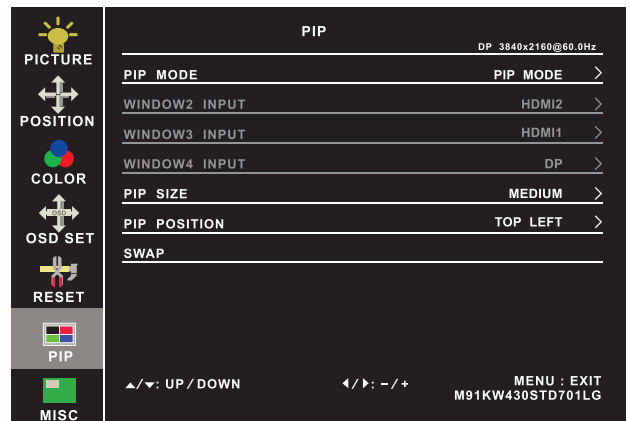
### ⑥ PIP ( Not Applicable to F17 / MF17 )

PIP mode : Enter into PIP / PBP setting - PIP MODE / PBP 2WIN ( Main screen + 1 sub screen ) / PBP 3WIN ( Main screen + 2 sub screen ) / PBP 4WIN ( Main screen + 3 sub screen )  
Select the signal input of each sub screen

PIP size : Adjust the size of the Sub screen  
- Small / Medium / Large / Huge

PIP position : Adjust the position of the Sub screen  
- Top Left / Top Right / Bottom Left / Bottom Right

Swap : Swap the input signal of PIP / PBP sub screen



### ⑦ MISC

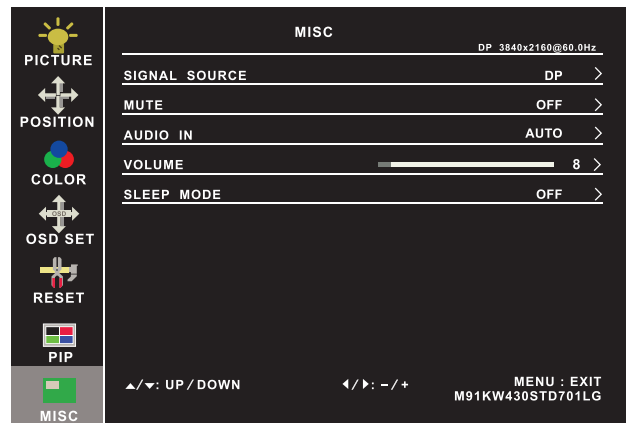
Signal source : Select the signal source - DP / HDMI1 / HDMI2

Mute : Turn off the surrounding sound

Audio in : Auto / Line in / DP

Volume : Adjust the volume of sound

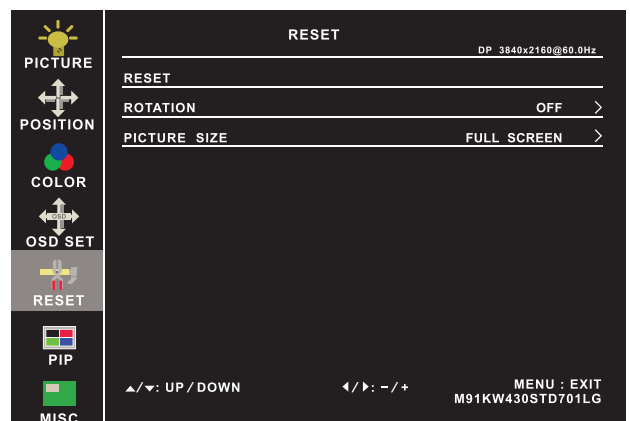
Sleep mode : Set the off time - 10 min / 20 min / 30 min / 50 min / 60 min / 120 min / 240 min



### Options on Reset page

Rotation : Rotate the image in Full screen or 1:1  
- 90° / 180° / 270°

Picture size : Adjust the image size in Full screen or 1:1



## < Part 5 > Options

### < 5.1 > Option Table

| Options                       | AP / NAP | HAP / HNAP | DP | HDP | OP | HOP |
|-------------------------------|----------|------------|----|-----|----|-----|
| SDI *                         | ✓        | ✓          | ✓  | ✓   | ✓  | ✓   |
| DVI-D **                      | ✓        | ✓          | ✓  | ✓   | ✓  | ✓   |
| Composite ( BNC )             | ✓        | ✓          | ✓  | ✓   | ✓  | ✓   |
| Audio                         | ✓        | ✓          | ✓  | ✓   | ✓  | ✓   |
| Touchscreen                   | ✓        | ✓          | ✓  | ✓   | ✓  | ✓   |
| MCS multi-display control     | ✓        | ✓          | ✓  | ✓   | ✓  | ✓   |
| DC Power                      | ✓        | ✓          | ✓  | ✓   | ✓  | ✓   |
| MIL-type / lockable connector | ✓        | ✓          | ✓  | ✓   | ✓  | ✓   |
| Quad display                  | ✓        | ✓          | ✓  | ✓   | ✓  | ✓   |
| TV ( Analog ) ***             | ✓        | ✓          | ✓  | ✓   | ✓  | ✓   |
| Auto / switch dimming         |          | ✓          |    | ✓   |    | ✓   |



\* SDI option comes speakers.

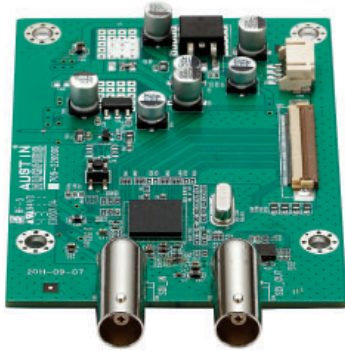
\*\* For DVI-D option, in some circumstances, if the user connects the LCD to PC via HDMI port for video and audio signals, the LCD may display incorrectly on a full screen. If so, please adjust the display card setting on display size to fix the issue.

\*\*\* SDI, DVI-D, BNC & TV options come with RC-2 remote controller.



## < 5.2 > Options : 3G / HD / SD-SDI input

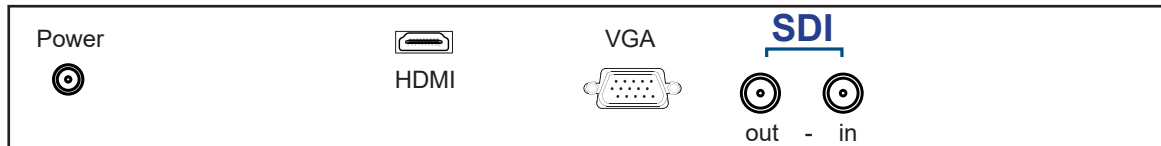
## 19" Widescreen Display



Austin Hughes' SDI input is an ideal solution for the broadcast-grade video and high resolution CCTV market.

Designed for use with UltraView displays, a SDI input module can support up to 1080p @60Hz resolution without using additional space or power and it comes standard with a 2-year warranty.

\* SDI option comes with speakers & RC-2 remote controller.



|              |            |  |
|--------------|------------|--|
| <b>INPUT</b> | 3G-SDI IN  | BNC x 1 / 0.8Vp-p ( 75 ohm )                   |
|              | 3G-SDI OUT | BNC x 1 / Active through, equalized & relocked |

|                            |       |   |
|----------------------------|-------|---|
| <b>Standard Compliance</b> | Video | SMPTE 425M / 274M / 296M / 125M<br>ITU-R BT.656 |
|                            | Audio | SMPTE 299M / 272M-C                             |

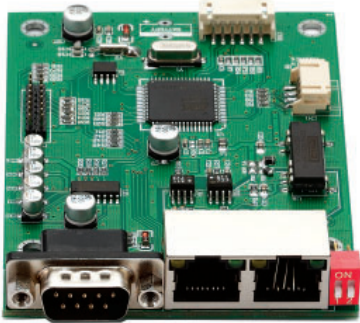
|                                |        |              |                        |
|--------------------------------|--------|--------------|------------------------|
| <b>Compatible Video Format</b> | 3G-SDI | 1080p        | @60 / 50Hz, 4:2:2      |
|                                |        | 1080p        | @30 / 25 / 24Hz, 4:4:4 |
|                                |        | 1080i        | @60 / 50Hz, 4:4:4      |
|                                |        | 720p         | @60 / 50Hz, 4:4:4      |
|                                | HD-SDI | 1080p        | @30 / 25 / 24Hz, 4:2:2 |
|                                |        | 1080i        | @60 / 50Hz, 4:2:2      |
|                                |        | 720p         | @60 / 50Hz, 4:2:2      |
| SD-SDI                         | 480i   | @60Hz, 4:2:2 |                        |
| ITU-R BT.656                   | 576i   | @50Hz, 4:2:2 |                        |

|                                |        |  |
|--------------------------------|--------|--|
| <b>Compatible Audio Format</b> | 3G-SDI | 48kHz, 16 / 20 / 24 bit, 2 CH, Synchronized Video                |
|                                | HD-SDI | 48kHz, 16 / 20 / 24 bit, 2 CH, Synchronized Video                |
|                                | SD-SDI | 48kHz, 16 / 20 / 24 bit, 2 CH, Synchronized / Asynchronous Video |

|  |        |                   |
|--|--------|-------------------|
| <b>Max. Transmission Distance<br/>75 ohm coaxial cable</b> | 3G-SDI | 150m at 2.97Gb/s  |
|  | HD-SDI | 250m at 1.485Gb/s |
|  | SD-SDI | 480m at 270Mb/s   |

## < 5.3 > Options : MCS

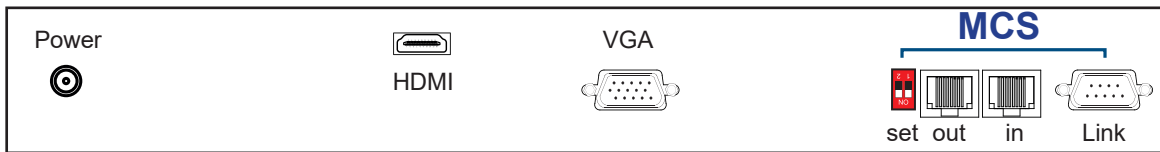
### MCS ( Multi-display Control )



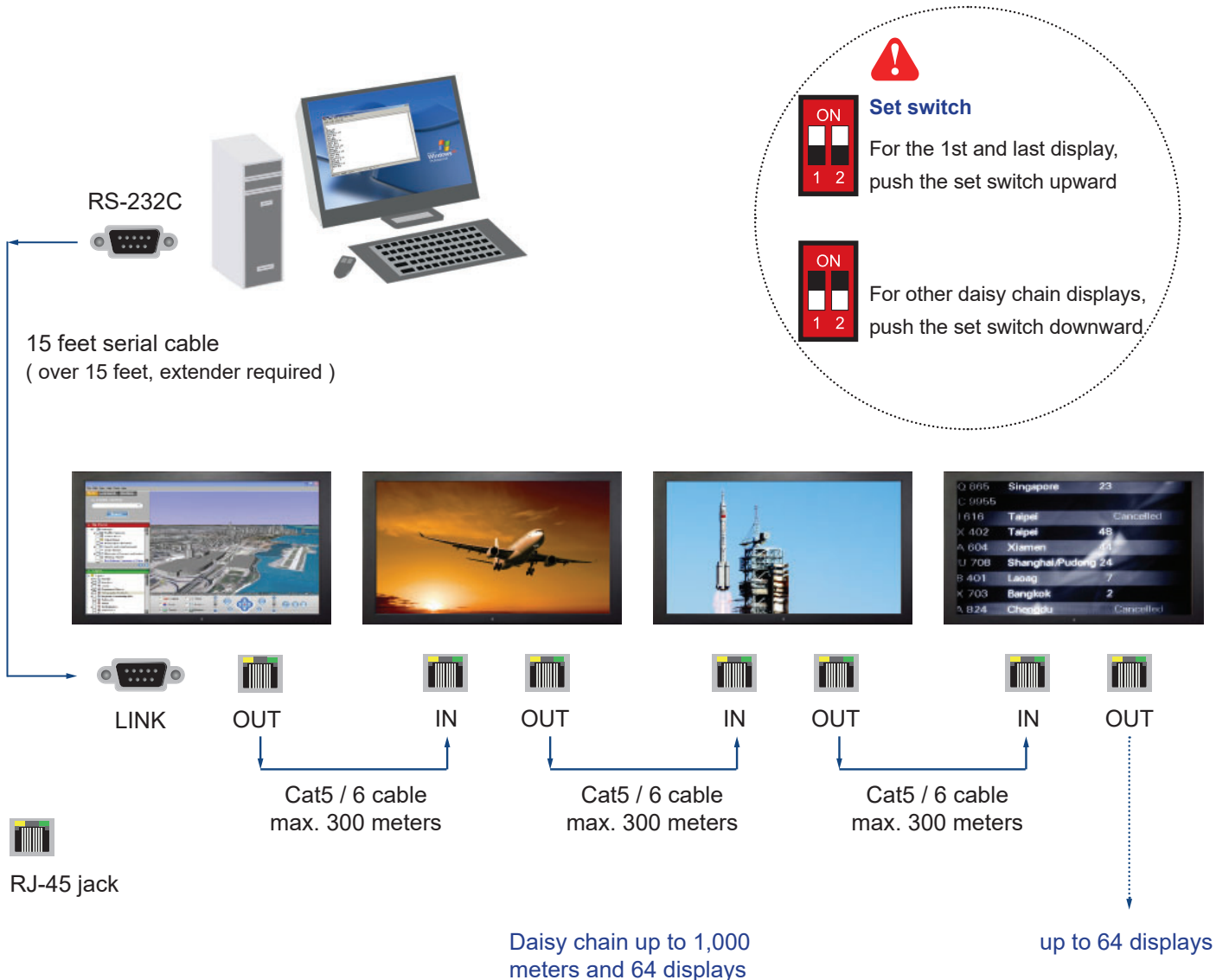
More control is always good. Especially when it is necessary and easy. Austin Hughes provides MCS solution to control the **OSD** of various UltraView LCD display up to 64 units.

The RS-232C is used for the communication between the PC and the first display via a 15 feet serial cable while the CAN bus is used for the various LCD displays cascade together via CAT 5/6 cable, and daisy chain up to 1,000 meters.

Designed for use with UltraView LCD displays, Austin Hughes provides a MCS input module without using additional space or power and it comes standard with a 2-year warranty.



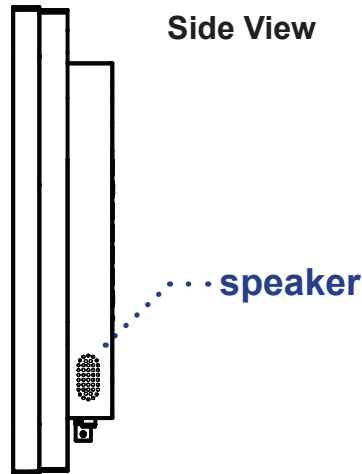
\*\*\* Please download the protocol of MCS control at :  
<http://www.austin-hughes.com/support/usermanual/ultraview/UM-UV-MCS.pdf>



< 5.4 > Options :

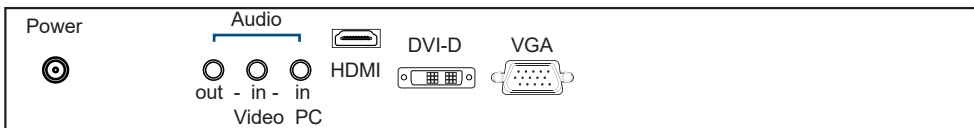
19" Widescreen Display

Speaker Option



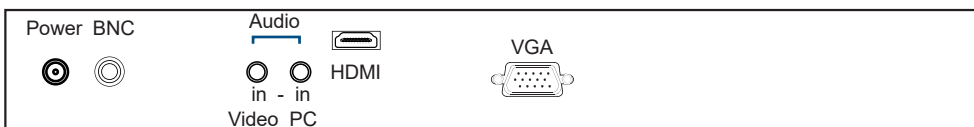
DVI-D Option

- DVI-D ( DVI-D, TMDS single link )
- Audio ( Audio input & output )
- Speaker



BNC Option

- BNC ( Composite, BNC )
- Audio IN
- Speaker



\*\*\*

( 1 ) In some circumstances, if the user connects the LCD to PC via HDMI port for video and audio signals, the LCD may display incorrectly on a full screen. If so, please adjust the display card setting on display size to fix the issue.

( 2 ) DVI-D & BNC options come with RC-2 remote controller x 1 ( please refer to P.28 Remote Controller (RC-2) )

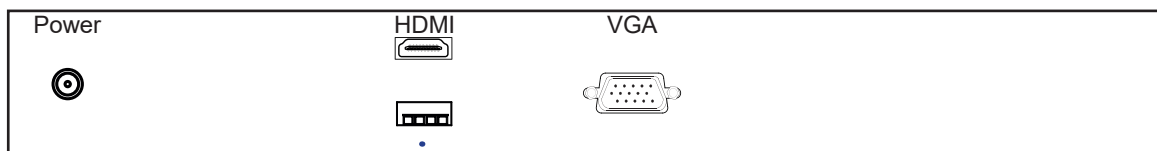
## < 5.5 > Options : Touchscreen & driver



### W19" USB Touchscreen Specification

|                             |                               |
|-----------------------------|-------------------------------|
| <b>Model</b>                | <b>TRB e-Resistive</b>        |
| <b>Technology</b>           | 5-Wire Resistive              |
| <b>Touch Point</b>          | Single                        |
| <b>Input Type</b>           | Finger or Stylus              |
| <b>Resolution</b>           | 2048 x 2048                   |
| <b>Touch Point Accuracy</b> | -                             |
| <b>Response Speed</b>       | 15 ms                         |
| <b>Activation Force</b>     | ≤ 50 g                        |
| <b>Surface Hardness</b>     | 3H                            |
| <b>Light Transmission</b>   | 80% ± 3%                      |
| <b>Haze</b>                 | 8% ± 3%                       |
| <b>Durability</b>           | 10 million touches            |
| <b>Top Layer</b>            | ITO Film                      |
| <b>Bottom Layer</b>         | ITO Glass                     |
| <b>Thickness</b>            | 3.2 ± 0.2 mm                  |
| <b>Connector</b>            | USB Type A                    |
| <b>Compatibility</b>        | Windows 7 / XP / Vista, Linux |

- Dimension will be changed if Multi-touch required
- USB touchscreen package includes 1 x 6ft USB cable, quick reference guideline and CD disc
- For detailed information, please refer to the attached CD disc
- As the touchscreen unit is not made of toughened glass, please handle it carefully



**USB Touchscreen**



### TRB Driver

**Please follow the below steps to setup the touch screen:-**

**Step 1.** Run the bundled CD disc or download the driver from the link below :

<http://www.austin-hughes.com/resources/driver/ultraview>

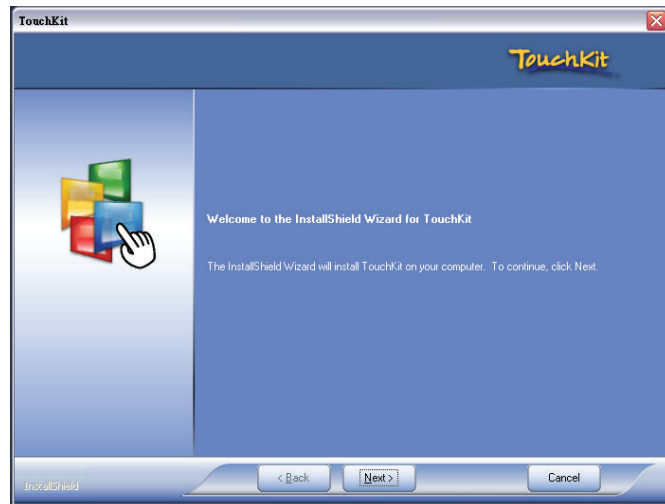
**Step 2.** Double click the Setup.exe

**Step 3.** Follow the installation instruction to finish the setup

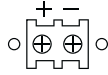
**Step 4.** After installation, run the TouchKit program & the “4 point calibration”



Please do the initial calibration after the first setup



## < 5.6 > Options : DC Power



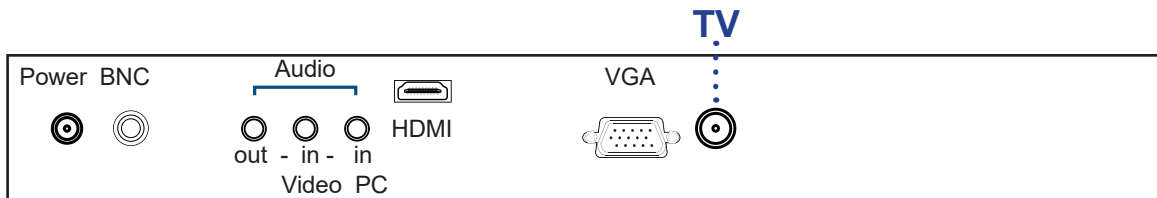
| Model                | 12V     | 24V      | 48V      | 125V      |
|----------------------|---------|----------|----------|-----------|
| <b>Input rating</b>  |         |          |          |           |
| Input voltage:       | 12-Volt | 24-Volt  | 48-Volt  | 110-Volt  |
| Input range:         | 9 ~ 18V | 18 ~ 36V | 36 ~ 75V | 66 ~ 160V |
| Input current        |         |          |          |           |
| - No load            | 50 mA   | 50 mA    | 50 mA    | 35 mA     |
| - Full load          | 4950 mA | 2450 mA  | 1220 mA  | 749 mA    |
| <b>Output rating</b> |         |          |          |           |
| Output voltage:      | 12-Volt | 12-Volt  | 12-Volt  | 12-Volt   |
| Output current:      | 4.16A   | 4.16A    | 4.16A    | 6.25A     |
| <b>Efficiency</b>    | 84%     | 85%      | 85%      | 91%       |

\*\*\* For DC power option :

( 1 ) If the unit with LCD, **earthing** may be required 

## < 5.7 > Options : TV ( Analog )

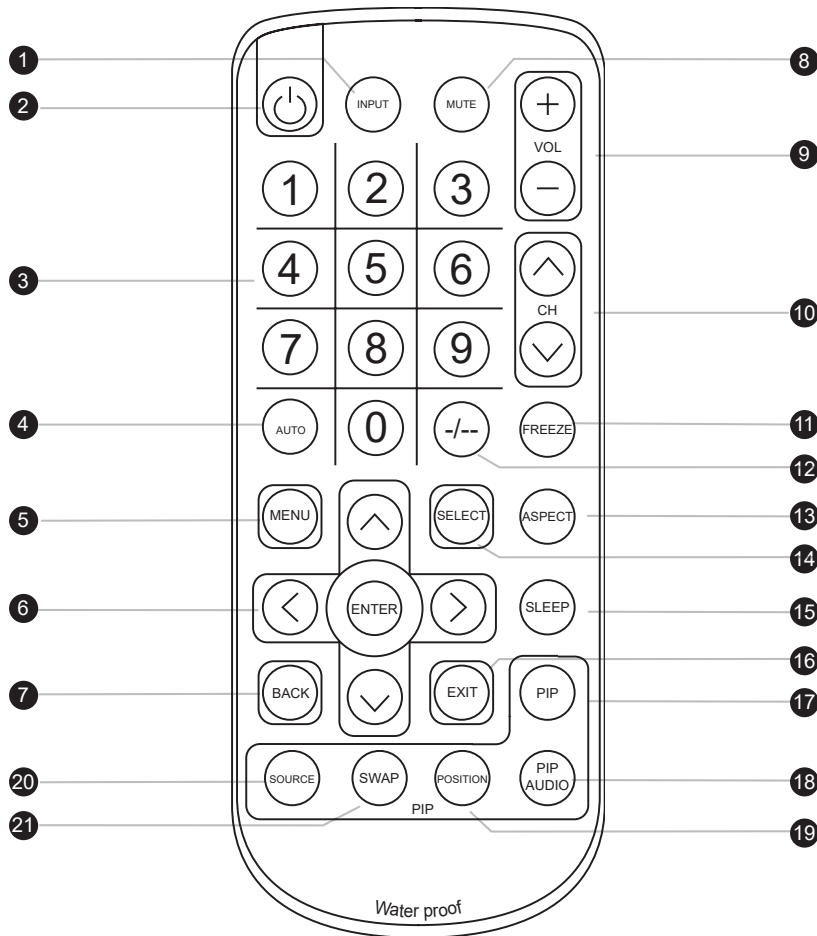
19" Widescreen Display



\*\*\* For TV option :

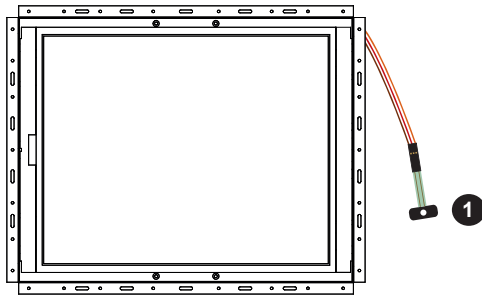
- ( 1 ) It comes with HDMI, VGA, BNC, audio inputs and RC-2 remote controller.
- ( 2 ) Casing dimensions will be changed.

## < 5.8 > How to Use RC-2 Remote Controller

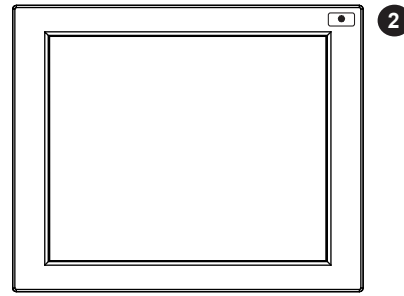


|                      |                              |  |
|----------------------|------------------------------|--|
| ①                    | <b>INPUT</b>                 | Select the source  |
| ②                    |                              | Switches on or off the TV  |
| ③                    | <b>0 - 9</b>                 | Only use in TV mode. Select channels. For channel numbers 10 and above, enter the second digit within two seconds.   |
| ④                    | <b>AUTO</b>                  | Auto adjust  |
| ⑤                    | <b>MENU</b>                  | Display the menu on the screen or go to the previous menu  |
| ⑥                    | <b>▲ / ▼ / ◀ / ▶ / ENTER</b> | Go to the upper menu or select the previous value /<br>Go to the next menu or select the next value /<br>Decrease the setting value /<br>Increase the setting value or enter to the select item setting<br>Enter to the select item settings or excude the setting |
| ⑦                    | <b>BACK</b>                  | Back to previous value   |
| ⑧                    | <b>MUTE</b>                  | Turn on or off the speaker   |
| ⑨                    | <b>Vol + / -</b>             | Increase or decrease the speaker volume  |
| ⑩                    | <b>CH + / -</b>              | For TV model only, increase or decrease the channel number   |
| ⑪                    | <b>FREEZE</b>                | Reserve for OEM model  |
| ⑫                    | <b>- / --</b>                | For setting input single or double digits  |
| ⑬                    | <b>ASPECT</b>                | Adjust the screen size   |
| ⑭                    | <b>SELECT</b>                | To select the existing item  |
| ⑮                    | <b>SLEEP</b>                 | Select the sleeping time   |
| ⑯                    | <b>EXIT</b>                  | Exit the menu or cancel  |
| <b>PIP functions</b> |                              |  |
| ⑰                    | <b>PIP</b>                   | Picture in picture   |
| ⑱                    | <b>PIP AUDIO</b>             | To set the audio of in PIP mode  |
| ⑲                    | <b>POSITION</b>              | To set the screen position in PIP mode   |
| ⑳                    | <b>SOURCE</b>                | PIP Source   |
| ㉑                    | <b>SWAP</b>                  | Swap screen in PIP mode  |





① DA-01 Light sensor on OP model  
( 66cm from AD board to sensor end )



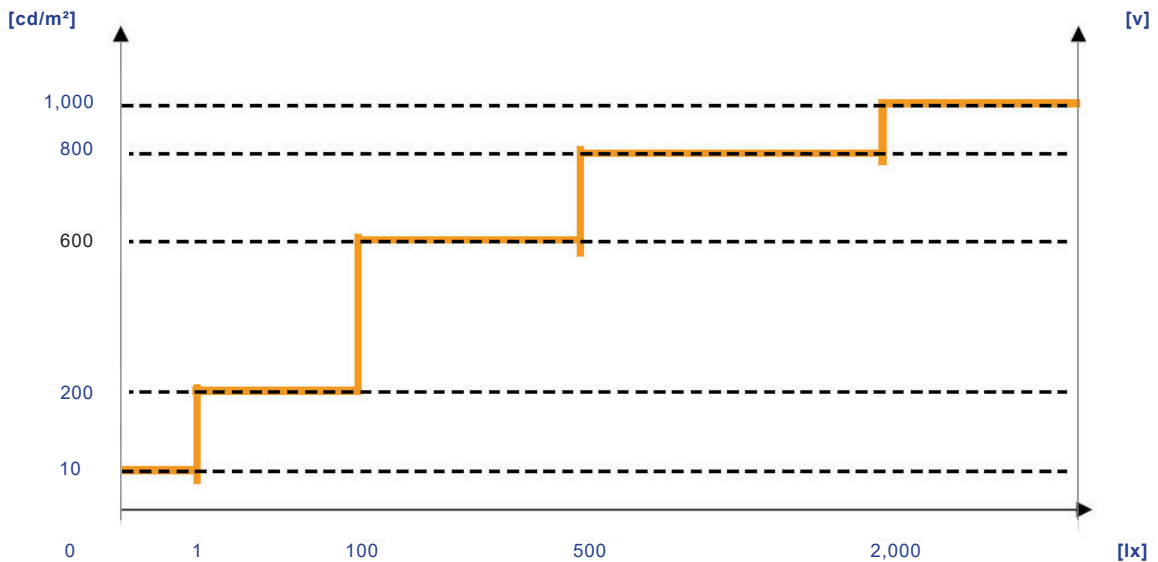
② DA-01 Light sensor on AP model

DA-01 light sensor installed on the display front panel. Users can set auto dimming ON or OFF from OSD menu. Then display brightness changes according to its ambient brightness. Each change causes 10% increase or decrease on display brightness.

Once the auto dimming is ON, users cannot adjust brightness from OSD menu.

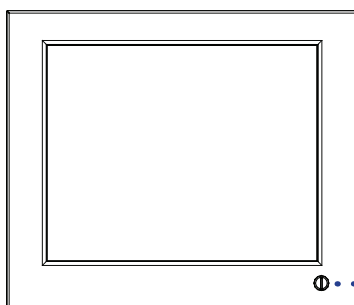
Steps : OSD Menu > Picture > Auto Dimming > ON

### Light Sensor Operation Range



### Options : Switch Dimming

DS-01 is a IP54 dimming knob installed on the bottom right side of the front panel. The display can support hyper dimming function to adjust brightness from nearly 0% to 100% via the easy-to-use knob. One click on dimming knob causes 2% increase or decrease on display brightness.



DS-01 dimming knob  
Dimensions ( W x H ) : 15.5 x 14.2 mm

\*\*\*

- For this option, front panel and casing dimensions may be changed.
- For HAP series, if DS-01 dimming knob applied, IP protection will be downgraded from IP65 to IP54.


# < 6 > Ultraview W19 Family

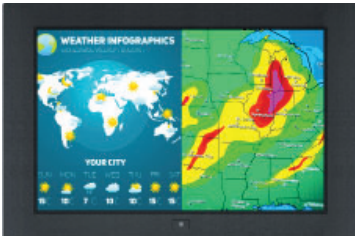
## 250 cd/m<sup>2</sup> Brightness

6mm aluminum front bezel



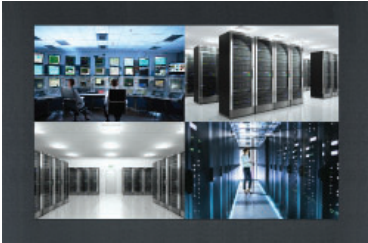
**AP-W19**

6mm aluminum front bezel   
NEMA 4 / IP65 front protection



**NAP-W19**

Aluminum front cover



**DP-W19**

Universal open frame




**OP-W19**

### MP-W19



- Industrial Display Kit
- Widescreen 19" LED
  - LCD controller
  - AC power

## 1000 cd/m<sup>2</sup> Sunlight Readable Brightness

6mm aluminum front bezel 




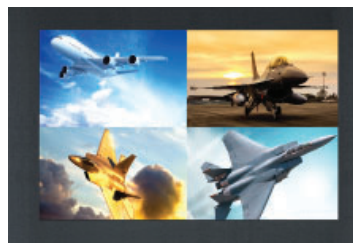
**HAP-W19**

6mm aluminum front bezel   
NEMA 4 / IP65 front protection 




**HNAP-W19**

Aluminum front cover 



**HDP-W19**

Universal open frame 



**HOP-W19**

# Intentionally Left Blank

The company reserves the right to modify product specifications without prior notice and assumes no responsibility for any error which may appear in this publication.

All brand names, logo and registered trademarks are properties of their respective owners.

Copyright 2024 Austin Hughes Electronics Ltd. All rights reserved.

UM-UV-621-W19-Q124V1

[www.austin-hughes.com](http://www.austin-hughes.com)