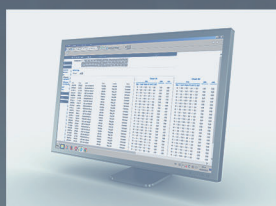




Reboot Your Device Over IP



FC

CE

CB

UK
CA



RoHS3

REACH

110V / 208V / 230V

**AUSTIN[®]
HUGHES**



Remote Reboot to Recover Your Device

- > When a complete restart is required MiniBoot provides a simple and easy way to reboot a hardware device.
- > In addition to manual on/off, MiniBoot provides 3 kinds of auto outlet control,:
 - IP-Ping automatically detects a failed system for timely reboot
 - Outlet on/off by sensor condition
 - Outlet on/off scheduling



Diversified Outlets & Inlets

- > Variety of outlets & inlets available for different regional power requirements
- > Outlet : US NEMA, IEC C13, UK BS1363, German Schuko CEE 7/3 or French CEE 7/5
- > Inlet : C20 for different regional power cords (Custom inlet available on request.)



Enterprise Level IP Authentication

- > Active Directory (AD), Lightweight Directory Access Protocol (LDAPv3 / LDAPS).
- > Remote Access Dial-In User Service (RADIUS) protocol, or local credential database.
- > Strong passwords and granular user/user group permissions.
- > Support high-speed network IP via Gigabit IP LAN port



Save Manpower & Travel Costs

- > Restart the problem device by remotely power on & off, MiniBoot allow user to recover the equipment via network IP.
- > Reduce manpower and travel costs by negating the need for staff to actually be at the equipment location, improving uptime and productivity.



Power Monitoring via Network & Local Meter

- > Allows remote monitoring via the free Graphic User Interface (GUI).
- > Provides local current monitoring via MiniBoot blue LED ammeter.
- > Allows user to establish the remaining capacity prior to adding a new device to the MiniBoot, plus displays the current being drawn and receives threshold alerts remotely.



Remote Management

- > Simultaneous access via free management web GUI.
- > SNMP V2 / V3 integration to DCIM.
- > Remote management protocols: HTTP(S); SSH Command Line Interface; Telnet; SMTP; IPv6/IPv4.



Alerts / Alarms

- > Receive alerts via SNMP, email (SMTP), and syslog when predefined thresholds are exceeded for both MiniBoot and environmental sensor events.
- > Common SNMP MIBs (Management Information Base) for all MiniBoot models.



Sensors & WiFi

- > Variety of optional sensors : Temperature & Humidity, Temperature, Smoke, Door.
- > Option to connect via a WiFi kit (IPD-WIFI) complying with 802.11 g/n/ac.

Remote power reboot and monitoring functions are essential for hardware systems. MiniBoot offers a cost-efficient power solution for any environment with electronic devices or systems. Users can try to recover the crashed device by remote reboot, reducing the need to send engineers to site (less personnel and travel costs by negating the need for staff to be at the equipment location) therefore improving uptime and productivity.

Unlike a rack power strip which is mounted inside an IT server rack enclosure, MiniBoot can be applied in diversified applications. MiniBoot is designed for a variety of industries - **Transportation (Air, Land and Sea), Broadcasting, Entertainment, Advertising, Manufacturing, Mining, Satellite, Defense, Education, Telecommunication, Finance & Banking, Commercial, etc.**

Applications



- Commercial Offices
- Telecommunication Offices
- Satellite Stations
- Digital Signage
- Video Walls
- Service Centers



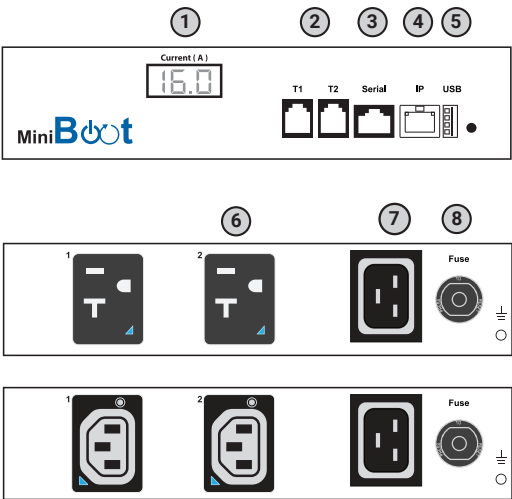
- Airport Check-in Kiosks
- Shopping Mall Kiosks
- ATM Machines
- Ticketing System
- Vending Machines
- Information Desks



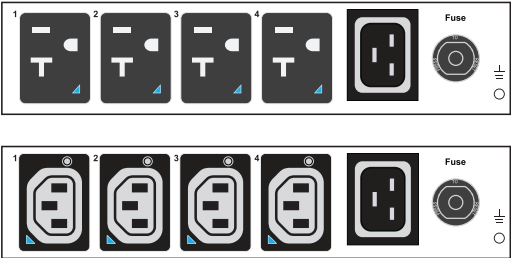
- Factory Automation Systems
- Production Plants
- Assembly Line
- Quality & Control Line



- Universities
- Education Institutes
- Lecture Theatres
- Tutorial Classes
- Training Rooms



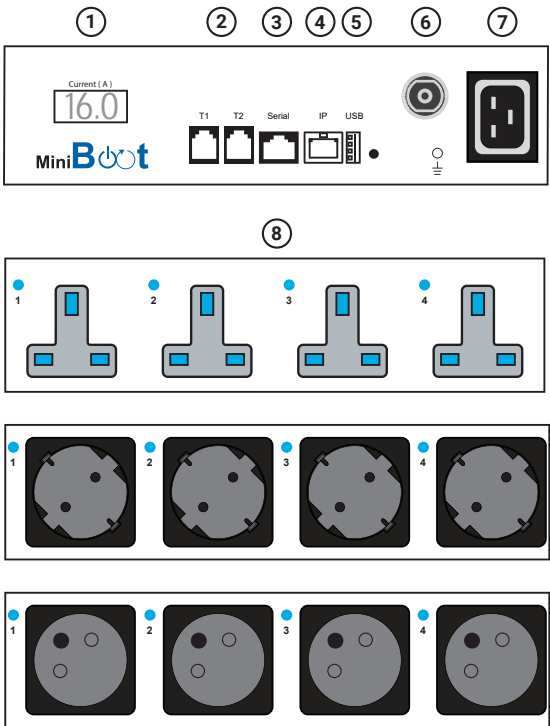
- 1 RMS current meter x 1
- 2 Sensor port x 2
- 3 Serial port x 1
- 4 Gigabit IP LAN port x 1
- 5 USB Wifi port x 1
- 6 Switched outlets (US NEMA, C13)
- 7 C20 Inlet x 1
- 8 Resettable fuse x 1



MiniBoot - NEMA / IEC			Amp			Product Dimension
Outlet	Inlet	Model	110V	208V	230V	W x D x H
NEMA x 2 NEMA x 4	C20 x 1	MiniBoot-2US MiniBoot-4US	15A			200 x 145 x 44.5 mm 7.9 x 5.7 x 1.8 inch
C13 x 2 C13 x 4		MiniBoot-2C13 MiniBoot-4C13		16A	10A / 13A / 16A	

UL FC CE CB UK RoHS3 REACH

* Custom configuration available on request
** Input cordset excluded
*** Dimensions are subject to change without prior notice

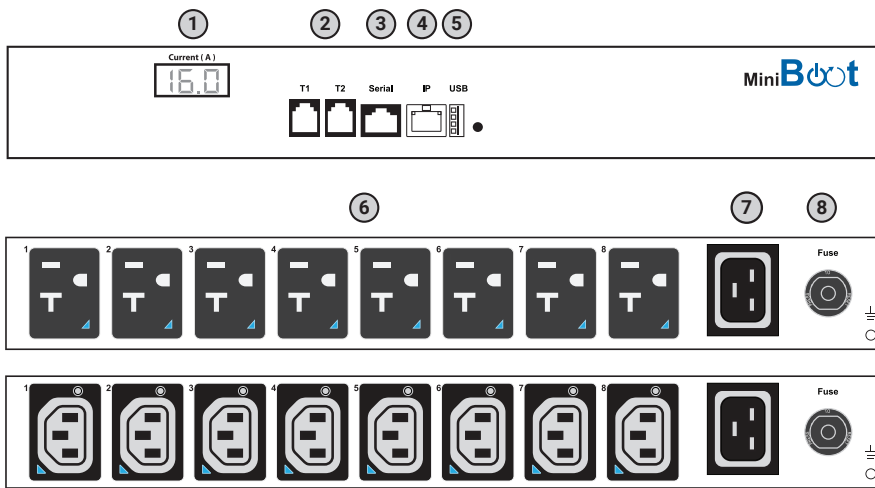


- 1 RMS current meter x 1
- 2 Sensor port x 2
- 3 Serial port x 1
- 4 Gigabit IP LAN port x 1
- 5 USB Wifi port x 1
- 6 Resettable fuse x 1
- 7 C20 Inlet x 1
- 8 Switched outlets (UK, Schuko or French)

MiniBoot - UK / SCH / FR			Amp			Product Dimension
Outlet	Inlet	Model	110V	208V	230V	W x D x H
UK x 4	C20 x 1	MiniBoot-4UK			10A / 13A / 16A	220 x 150 x 55 mm 8.7 x 5.9 x 2.2 inch
Schuko x 4	C20 x 1	MiniBoot-4SCH			10A / 16A	
French x 4	C20 x 1	MiniBoot-4FR			10A / 16A	

CE CB UK RoHS3 REACH

* Custom configuration available on request
** Input cordset excluded
*** Dimensions are subject to change without prior notice



- ❶ RMS current meter x 1
- ❷ Sensor port x 2
- ❸ Serial port x 1
- ❹ Gigabit IP LAN port x 1
- ❺ USB Wifi port x 1
- ❻ Switched outlets (US NEMA, C13)
- ❼ C20 Inlet x 1
- ❽ Resettable fuse x 1

MiniBoot - NEMA / IEC			Amp			Product Dimension
Outlet	Inlet	Model	110V	208V	230V	W x D x H
NEMA x 8	C20	MiniBoot-8US	15A			345 x 145 x 44.5 mm 13.6 x 5.7 x 1.8 inch
C13 x 8	C20	MiniBoot-8C13		16A	10A / 13A / 16A	



RoHS3

REACH

- * Custom configuration available on request
- ** Input cordset excluded
- *** Dimensions are subject to change without prior notice

Hardware Specifications

Electrical	
Nominal input voltage	110V / 208V / 230V
Acceptable input voltage	±10% nominal
Input frequency	50 / 60Hz
Inlet	C20
Outlet	US NEMA, C13, UK BS1363, Schuko or French
Local meter	3-digit RMS current meter
Accuracy	± (3% of the reading + 5 last digits) RMS
Overload protection	Resettable fuse
Electrical endurance	1 x 10 ⁵ operations

Chassis	
Color	White
Material	Steel

Environmental	
Operating temperature	-5 to 60°C degree (23 to 140°F)
Storage temperature	-25 to 65°C degree (13 to 149°F)
Operating humidity	0~95%, non-condensing
Storage humidity	0~95%, non-condensing

Compliance	110V / 208V	230V
EMC	FCC Part 15 Subpart B ICES-003 Issue 7	CE / EMC
Safety	UL 62368-1 : 2014 CSA C22.2 No. 62368-1 : 2014	CB, CE / LVD & UKCA EN 62368-1 : 2014 / A11 : 2017 BS EN 62368-1 : 2014 / A11 : 2017 IEC 62368-1 : 2014
Environment	RoHS3, Reach & WEEE	
ISO	9001 / 14001	

Physical	NEMA or C13		
	2 x outlet	4 x outlet	8 x outlet
Product (W x D x H)	200 x 145 x 44.5 mm		345 x 145 x 44.5 mm
Packing (W x D x H)	300 x 196 x 81 mm		525 x 230 x 80 mm
Net weight	0.9 kg / 2.0 lb		1.6 kg / 3.5 lb
Gross weight	1.2 kg / 2.7 lb		2.54 kg / 5.6 lb

Physical	UK, SCH or FR	
	4 x outlet	
Product (W x D x H)	220 x 150 x 55 mm	
Packing (W x D x H)	300 x 196 x 81 mm	
Net weight	1.23 kg / 2.7 lb	
Gross weight	1.53 kg / 3.4 lb	

Remote Reboot & Amp Monitoring Over IP

Remote management helps reducing manpower and hence improving uptime and productivity. It also benefits users with capacity planning and increasing the overall efficiency of the power management. MiniBoot offers two remote power management solutions for users' selection.



Built-in



via SNMP V2 / V3



Built-in MiniBoot GUI

User-friendly GUI is included with MiniBoot. The Administrator can remotely manage the MiniBoot via the web browser. It provides individual outlet switching On/Off, current monitoring and alarm alert functions. With enterprise level IP authentication, the administrator can manage the MiniBoot remotely with high security.

Circuit Monitoring & Outlet Switching

MiniBoot Version: Q121V1

Details

Model: MiniBoot-BC13 Name: default_mib_name
Status: Connected Location: default_mib_loc

Setting

Sensor 1: ☐ Sensor 2: ☐

System

Max amp: 16.0 Alarm amp: 14.2
Load amp: 0.0 Peak amp: 0.0
Low alert amp: 0.0
Peak amp: 8.9 20000101 00:00:00

Outlet

Outlet	Name	Amp	kWh	kVA	Status	Switch
01	outlet_name_01	-	-	-	OFF	ON
02	outlet_name_02	-	-	-	OFF	ON
03	outlet_name_03	-	-	-	OFF	ON
04	outlet_name_04	-	-	-	OFF	ON

Click outlet icon for setting

Outlet Control

Device

Details

Outlet Control

Setting

Rule ID	Name	Period	Time
01	Office Opening	00:00 - 23:59	D
02	Checking Failure	09:00 - 23:59	S
03	Office Closing	00:00 - 23:59	D
04	The default rule 4 name	00:00 - 23:59	D
05	The default rule 5 name	00:00 - 23:59	D
06	The default rule 6 name	00:00 - 23:59	D
07	The default rule 7 name	00:00 - 23:59	D

System Audit Trail

MiniBoot Version: Q121V1

Device

Details

Setting

#	Type	Date & Time	Event
1	System	2020-10-08 03:39:45	Change outlet power control settings
2	System	2020-10-08 03:39:45	Change outlet power control settings
3	System	2020-10-08 03:39:45	Change outlet power control settings
4	System	2020-10-08 03:39:45	Change outlet power control settings
5	System	2020-10-08 03:39:45	Change outlet power control settings
6	System	2020-10-08 03:39:45	Change outlet power control settings
7	System	2020-10-08 03:39:45	Change outlet power control settings
8	System	2020-10-08 03:39:45	Change outlet power control settings
9	System	2020-10-08 03:39:45	Change outlet power control settings

3rd Party DCIM via SNMP V2 / V3

MiniBoot supports SNMP V2 / V3 integration for clients requiring remote management of the MiniBoot using their existing DCIM (Data Center Infrastructure Management) in order to centralize the management for monitoring power, cooling and environmental factors across facilities and IT systems.

MiniBoot Software

FREE MiniBoot Web Power Reboot GUI

Functions	<ul style="list-style-type: none"> Manual outlet on / off by GUI / SNMP Automatic outlet on / off by scheduling , IP Ping and sensor condition Aggregate current (Amp) monitoring Alarm alert
Enterprise Level IP Authentication	<ul style="list-style-type: none"> Active Directory (AD), Lightweight Directory Access Protocol (LDAPv3 / LDAPS) Remote Access Dial-In User Service (RADIUS) protocol, or local credential database
Remote Management	<ul style="list-style-type: none"> Protocols: HTTP(S); SSH Command Line Interface; Telnet; SMTP; IPv6/IPv4
Alarms / Alerts	<ul style="list-style-type: none"> Receive alerts via SNMP, email (SMTP), and syslog when predefined thresholds are exceeded for both MiniBoot and environmental sensor events Common SNMP MIBs (Management Information Base) for all MiniBoot models
SNMP	<ul style="list-style-type: none"> SNMPv1/v2 & SNMPv3 for integration to DCIM

Free Mounting Kit

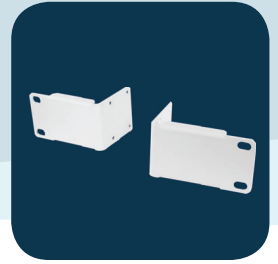
Side Mount Kit

- Included with all MiniBoot models
- Enables easy installation into existing kiosks, walls, work panels and furniture



Rack Mount Kit

- Included with IEC / US MiniBoot models
- 19" horizontal rack mount version



Sensors & Peripherals

WiFi Kit

- 802.11 g/n/ac WiFi
- Low-profile design wireless athena
- Magnetic base design for tool-less installation
- 1M cord with USB port



Temperature & Humidity Sensor Temperature Sensor

- Plug & play
- External sensor with 2M or 4M cord
- Low profile design with magnetic base for easily affix to the rack



Smoke Sensor

- Smoke Sensor with 1M or 3M cord
- When smoke alarm triggers the red LED light is visible on the sensor with continuous audio alert



Door Sensor

- Mechanical door sensor with 2M or 4M cord
- Cost efficient integration into rack



Mini IP Solution Package

Please contact our professional
distribution partners

**AUSTIN
HUGHES**





Founded in 1995, Austin Hughes is a design and manufacturing group that offers a broad range of solutions based around 19-inch rack mount technology. These solutions include UltraRack IT server rack, InfraRack smart rack, InfraPower rack PDU & ATS, InfraCool rack cooling systems, InfraGuard rack sensors and peripherals, InfraSolution rack access control and CyberView rack LCD KVM switches. We also offer industrial & commercial IT products, such as UltraView professional displays and Mini IP solutions.

Austin Hughes has ISO14001 and ISO9001 approved design, manufacturing, assembly, and test facilities. We support a worldwide customer base through our global locations.



As a leading global IT manufacturer, Austin Hughes provides TAA-compliant data center solutions, manufactures and assembles products in strategic TAA-certified locations.



Rack Power Expert



Professional Distribution Partner



Visit our Website ▶



Americas

Austin Hughes Solutions Inc.
21375 Cabot Blvd
Hayward, CA 94545
United States

inquiry-americas@austin-hughes.com

EMEA

Austin Hughes Europe Ltd.
Unit 1, Chancery Gate Business Centre
Manor House Avenue
Southampton, SO15 0AE
United Kingdom

inquiry-emea@austin-hughes.com

APAC

Austin Hughes Electronics Ltd.
Unit 3608-12, Cable TV Tower
9 Hoi Shing Road, Tsuen Wan
Hong Kong

inquiry-apac@austin-hughes.com

ASEAN

Austin Hughes Pte. Ltd.
164 Gul Circle
#01-07 JTC Space@Gul
Singapore 629621

inquiry-asean@austin-hughes.com

Austin Hughes has an extensive distribution network, including the Americas, EMEA, APAC & ASEAN
Contact your nearest sales office for details of local representation

Please ask for details of other products from Austin Hughes. Every effort has been made to ensure that the information contained herein is correct. There is a possibility that the image(s) shown may not be exactly the same as the final product. The company reserves the right to modify product specifications without prior notice and assumes no responsibility for any error which may appear in this publication.

All brand names, logo and registered trademarks are properties of their respective owners.
Copyright 2024 Austin Hughes Electronics Ltd. All rights reserved.

Distributed by:

Distributor by country on application

CA-MiniBoot-Q324V2