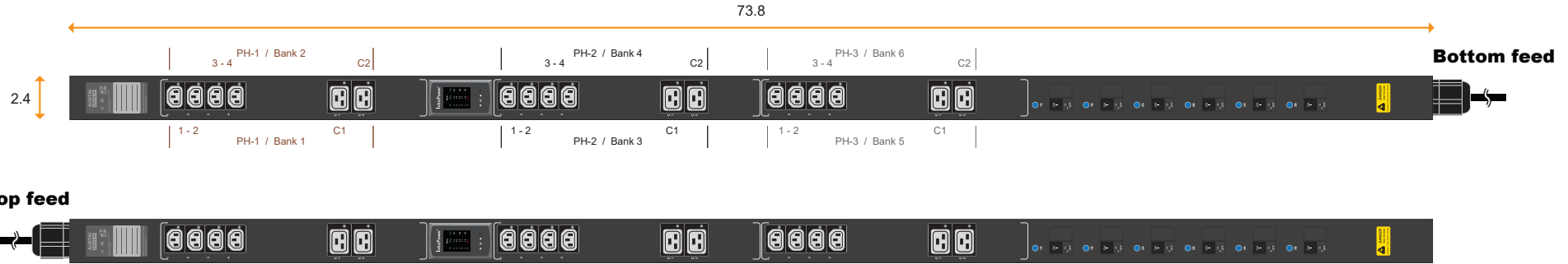


# 3-Phase metered PDU specification drawing

## 208V 50A / 60A PDU : C13 x 12 + C19 x 6

unit : inch



PDU Feed	Code
Bottom	<b>B</b>
Top	<b>T</b>



60A model :	Circuit Protection
VP12C13/6C19-60A-MK/CR_EN/2 <b>B</b> -1	2-pole MCB x 6

- Input Rating : 60Amp (48A derated), 208V 3PH
- Power Capacity : 17.3 kVA
- Cordset : 4-wire 6.6ft SOOW 6 AWG/4C cordset
- Protection : 20A 2-pole hydraulic MCB x 6
- PH-1 - Bank 1 : C13 #1-2 + C19 #C1
- Bank 2 : C13 #3-4 + C19 #C2
- PH-2 - Bank 3 : C13 #1-2 + C19 #C1
- Bank 4 : C13 #3-4 + C19 #C2
- PH-3 - Bank 5 : C13 #1-2 + C19 #C1
- Bank 6 : C13 #3-4 + C19 #C2
- Weight : Net - lb / Gross - lb

Chassis Color	Code
Black	<b>1</b>
White	<b>2</b>
Red	<b>3</b>
Blue	<b>4</b>
Green	<b>5</b>
Orange	<b>6</b>
Yellow	<b>7</b>
Purple	<b>8</b>



50A model :	Circuit Protection
VP12C13/6C19-50A-MK/CR_CS8365C/2 <b>B</b> -1	2-pole MCB x 6

- Input Rating : 50Amp (40A derated), 208V 3PH
- Power Capacity : 14.4 kVA
- Cordset : 4-wire 6.6ft SOOW 6 AWG/4C cordset
- Protection : 20A 2-pole hydraulic MCB x 6
- PH-1 - Bank 1 : C13 #1-2 + C19 #C1
- Bank 2 : C13 #3-4 + C19 #C2
- PH-2 - Bank 3 : C13 #1-2 + C19 #C1
- Bank 4 : C13 #3-4 + C19 #C2
- PH-3 - Bank 5 : C13 #1-2 + C19 #C1
- Bank 6 : C13 #3-4 + C19 #C2
- Weight : Net - lb / Gross - lb

Standard color : Black

- Operating Temperature : -5 to 60 °C
- Storage Temperature : -25 to 65 °C
- Operating Altitude : 0 to 2,000 m
- Storage Altitude : 0 to 15,000 m
- Humidity : 8 to 95% RH, non-condensing

- Meter Features ( MK meter )**
- Local Display : Hotswappable 1.8" Color LCD
  - Phase level x 3 : Current ( A ), Phase Voltage ( V ), Energy ( kW ), Power Factor & Frequency ( Hz )
  - Accuracy : Billing Grade +/-1%

- EMC Compliance : FCC Part 15 Subpart B (Class A)
- Safety Compliance : Tested to UL 60730-1:2016 and CAN / CSA-E60730-1:2015  
Tested to UL62368-1:2014 and CAN / CSA-C22.2 No. 62368-1:2014
- Environment Compliance : RoHS3 & REACH

**AUSTIN HUGHES**  
Design. Manufacturing. Global Services.

The company reserves the right to modify product specifications without prior notice and assumes no responsibility for any error which may appear in this publication.

Copyright 2022 Austin Hughes Electronics Ltd. All rights reserved.

- Product Dimension : 2.4 (W) x 2.8 (D) x 73.8 (H) inch
- Packing dimension ( for 2 PDUs ) : 4.3 (W) x 10.6 (D) x 85.4 (H) inch

## Lockable IEC Outlet

- Patented design for InfraPower PDU



C13 Outlet



C19 Outlet

## Lockable IEC Cable

- Patented design of InfraPower PDU
- Low cost, easy to lock & secure
- Proprietary for lockable IEC outlet
- Applicable to standard IEC outlet
- 6 colors & 3 lengths available
- Custom color & length on request
- VDE & ENEC approval

### C13 - C14

H05VV-F 3G 0.75mm<sup>2</sup>

Cable Color	0.5M	1M	2M
Black	✓	✓	✓
Grey	✓	✓	✓
Red	✓	✓	✓
Blue	✓	✓	✓
Green	✓	✓	✓
Orange	✓	✓	✓



### C19 - C20

H05VV-F 3G 1.5mm<sup>2</sup>

Cable Color	1M	2M
Black	✓	✓
Grey	✓	✓
Red	✓	✓
Blue	✓	✓
Green	✓	✓
Orange	✓	✓



C13 - C14



lockable cable

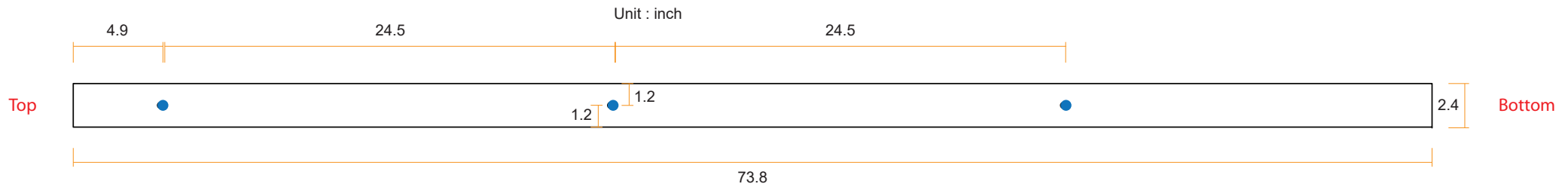
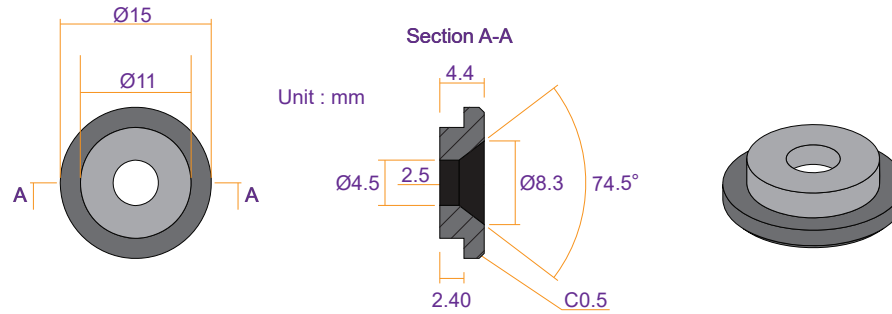
C19 - C20

- ✓ low cost
- ✓ easy to lock
- ✓ secure





### VMS Mounting Button

 **x 3** +  **x 3**  
**M4 Screw**  
 - Flat head  
 - M4x8mm  
**PEG**



### VMB Mounting Bracket

 **x 4** +  **x 2**  
**M3.2 Screw**  
 - Flat head  
 - M3.2x6mm  
**Bracket**

