

Circuit Protection	Code
Fuse	<b>F</b>
MCB	<b>CR</b>



32A model :	Circuit Protection
VP12C13/6C19-32A-MK/ <b>F</b> _EN/2 <b>B</b> -1	Resettable Fuse x 6
VP12C13/6C19-32A-MK/ <b>CR</b> _EN/2 <b>T</b> -1	1-pole MCB x 6

- Input Rating : 32Amp, 400V 3PH
- Cordset : 5-wire 2 meter 4mm sq. H05V V-F cordset
- Protection : 16A resettable fuse or 16A single pole hydraulic MCB x 6
- PH-1 - Bank 1 : Output 16A max., C13 #1-2 + C19 #C1  
Bank 2 : Output 16A max., C13 #3-4 + C19 #C2
- PH-2 - Bank 3 : Output 16A max., C13 #1-2 + C19 #C1  
Bank 4 : Output 16A max., C13 #3-4 + C19 #C2
- PH-3 - Bank 5 : Output 16A max., C13 #1-2 + C19 #C1  
Bank 6 : Output 16A max., C13 #3-4 + C19 #C2
- Weight : Net 9.5 Kg / Gross 10.5 Kg

PDU Feed	Code
Bottom	<b>B</b>
Top	<b>T</b>

Chassis Color	Code
Black	<b>1</b>
White	<b>2</b>
Red	<b>3</b>
Blue	<b>4</b>
Green	<b>5</b>
Orange	<b>6</b>
Yellow	<b>7</b>
Purple	<b>8</b>



16A model :	Circuit Protection
VP12C13/6C19-16A-MK/ <b>F</b> _EN/2 <b>B</b> -1	Resettable Fuse x 3
VP12C13/6C19-16A-MK/ <b>CR</b> _EN/2 <b>T</b> -1	1-pole MCB x 3

- Input Rating : 16Amp, 400V 3PH
- Cordset : 5-wire 2 meter 1.5mm sq. H05V V-F cordset
- Protection : 16A resettable fuse or 16A single pole hydraulic MCB x 3
- PH-1 : Output 16A max., C13 #1-4 + C19 #C1-C2
- PH-2 : Output 16A max., C13 #1-4 + C19 #C1-C2
- PH-3 : Output 16A max., C13 #1-4 + C19 #C1-C2
- Weight : Net 9.5 Kg / Gross 10.5 Kg

Standard color : Black

Operating Temperature : -5 to 60 °C  
Storage Temperature : -25 to 65 °C  
Operating Altitude : 0 to 2,000 m  
Storage Altitude : 0 to 15,000 m  
Humidity : 8 to 95% RH, non-condensing

### Meter Features ( MK meter )

Local Display : Hotswappable 1.8" Color LCD

Phase level x 3 : Current ( A ), Phase Voltage ( V ), Energy ( kW ), Power Factor & Frequency ( Hz )

Accuracy : Billing Grade +/-1%

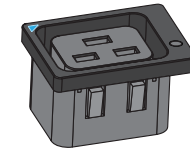
EMC Compliance : CE / EMC  
Safety Compliance : CE / LVD & UKCA  
Tested to EN 62368-1:2014 / A11:2017 standard  
Tested to EN 60730-1:2016 / A1:2019 standard  
Environment Compliance : RoHS3 & REACH

## Lockable IEC Outlet

- Patented design for InfraPower PDU



C13 Outlet



C19 Outlet

## Lockable IEC Cable

- Patented design of InfraPower PDU
- Low cost, easy to lock & secure
- Proprietary for lockable IEC outlet
- Applicable to standard IEC outlet
- 6 colors & 3 lengths available
- Custom color & length on request
- VDE & ENEC approval

### C13 - C14

H05VV-F 3G 0.75mm<sup>2</sup>

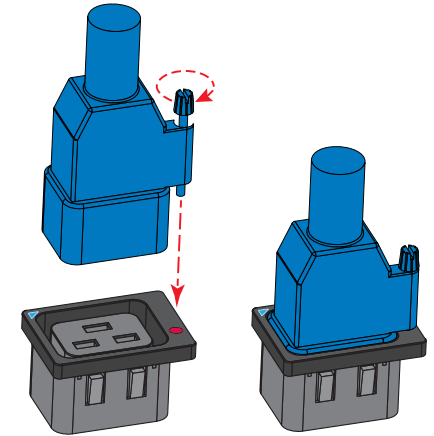
Cable Color	0.5M	1M	2M
Black	✓	✓	✓
Grey	✓	✓	✓
Red	✓	✓	✓
Blue	✓	✓	✓
Green	✓	✓	✓
Orange	✓	✓	✓



### C19 - C20

H05VV-F 3G 1.5mm<sup>2</sup>

Cable Color	1M	2M
Black	✓	✓
Grey	✓	✓
Red	✓	✓
Blue	✓	✓
Green	✓	✓
Orange	✓	✓

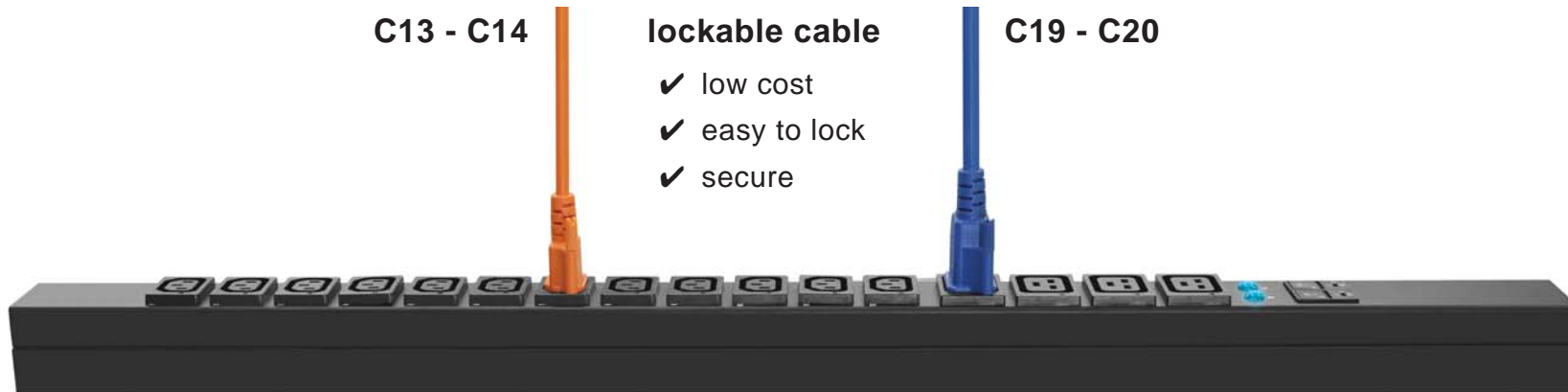


C13 - C14



lockable cable

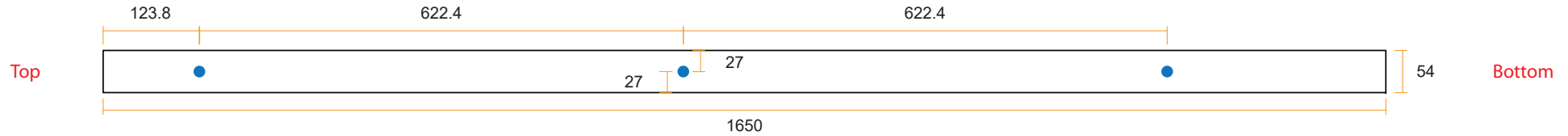
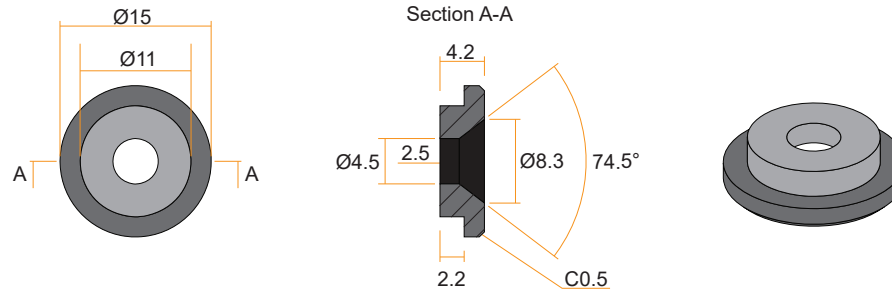
C19 - C20

- ✓ low cost
- ✓ easy to lock
- ✓ secure





### VMS Mounting Button

 **x 3** +  **x 3**  
**M4 Screw**  
 - Flat head  
 - M4x8mm  
**PEG**



### VMB Mounting Bracket

 **x 4** +  **x 2**  
**M3.2 Screw**  
 - Flat head  
 - M3.2x6mm  
**Bracket**

