



FC CE CB UK CA RoHS3 REACH

# Mini IP KVM User Manual

Desktop Remote Server Management at Anywhere

- Mini Size
- Variety of Video Port Selection
- 1-port, 2-port, 4-port IP KVM Gateway
- User Friendly IP Remote Access
- OS Support : Mac / Windows / Linux

## Legal Information

First English printing, April 2025

Information in this document has been carefully checked for accuracy; however, no guarantee is given to the correctness of the contents. The information in this document is subject to change without notice. We are not liable for any injury or loss that results from the use of this equipment.

## Safety Instructions

**Please read all of these instructions carefully before you use the device. Save this manual for future reference.**

- Unplug equipment before cleaning. Don't use liquid or spray detergent; use a moist cloth.
- Keep equipment away from excessive humidity and heat. Preferably, keep it in an air-conditioned environment with temperatures not exceeding 40° Celsius (104° Fahrenheit).
- When installing, place the equipment on a sturdy, level surface to prevent it from accidentally falling and causing damage to other equipment or injury to persons nearby.
- When the equipment is in an open position, do not cover, block or in any way obstruct the gap between it and the power supply. Proper air convection is necessary to keep it from overheating.
- Arrange the equipment's power cord in such a way that others won't trip or fall over it.
- If you are using a power cord that didn't ship with the equipment, ensure that it is rated for the voltage and current labeled on the equipment's electrical ratings label. The voltage rating on the cord should be higher than the one listed on the equipment's ratings label.
- Observe all precautions and warnings attached to the equipment.
- If you don't intend on using the equipment for a long time, disconnect it from the power outlet to prevent being damaged by transient over-voltage.
- Keep all liquids away from the equipment to minimize the risk of accidental spillage. Liquid spilled on to the power supply or on other hardware may cause damage, fire or electrical shock.
- Only qualified service personnel should open the chassis. Opening it yourself could damage the equipment and invalidate its warranty.
- If any part of the equipment becomes damaged or stops functioning, have it checked by qualified service personnel.

## What the warranty does not cover

- Any product, on which the serial number has been defaced, modified or removed.
- Damage, deterioration or malfunction resulting from:
  - ☐ Accident, misuse, neglect, fire, water, lightning, or other acts of nature, unauthorized product modification, or failure to follow instructions supplied with the product.
  - ☐ Repair or attempted repair by anyone not authorized by us.
  - ☐ Any damage of the product due to shipment.
  - ☐ Removal or installation of the product.
  - ☐ Causes external to the product, such as electric power fluctuation or failure.
  - ☐ Use of supplies or parts not meeting our specifications.
  - ☐ Normal wear and tear.
  - ☐ Any other causes which does not relate to a product defect.
- Removal, installation, and set-up service charges.

## Regulatory Notices Federal Communications Commission (FCC)

This equipment has been tested and found to comply with the limits for a Class A digital device, pursuant to Part 15 of the FCC rules. These limits are designed to provide reasonable protection against harmful interference in business, industrial and commercial environments.

Any changes or modifications made to this equipment may void the user's authority to operate this equipment. This equipment generates, uses, and can radiate radio frequency energy and, if not installed and used in accordance with the instructions, may cause harmful interference to radio communications.

However, there is no guarantee that interference will not occur in a particular installation. If this equipment does cause harmful interference to radio or television reception, which can be determined by turning the equipment off and on, the user is encouraged to try to correct the interference by one or more of the following measures:

- Re-position or relocate the receiving antenna.
- Increase the separation between the equipment and receiver.
- Connect the equipment into an outlet on a circuit different from that to which the receiver is connected.

# Contents

<b>&lt; Part 1 &gt; Models &amp; package content</b>	<b>P.3</b>
<b>&lt; Part 2 &gt; Setting</b>	<b>P.4</b>
2.1    Login Mini IP KVM	
2.2    Remote Console Resolution	
2.3    Directional Mouse	
2.4    Remote Console Hotkey	
<b>&lt; Part 3 &gt; USB-C IP KVM</b>	<b>P.7</b>
3.1    Specification	
3.2    Design Overview	
3.3    I/O & Connection	
<b>&lt; Part 4 &gt; HDMI IP KVM</b>	<b>P.9</b>
4.1    Specification	
4.2    Design Overview	
4.3    I/O & Connection	
<b>&lt; Part 5 &gt; VGA IP KVM</b>	<b>P.11</b>
5.1    Specification	
5.2    Design Overview	
5.3    I/O & Connection	
<b>&lt; Part 6 &gt; DVI-D IP KVM</b>	<b>P.13</b>
6.1    Specification	
6.2    Design Overview	
6.3    I/O & Connection	

## < Part 1 > Models & package content

### Models



#### USB-C

- 1-port ( IP-C101 )
- 2-port ( IP-C102 )
- 4-port ( IP-C104 )



#### VGA

- 1-port ( IP-S101 )
- 2-port ( IP-S102 )
- 4-port ( IP-S104 )



#### HDMI

- 1-port ( IP-H101 )
- 2-port ( IP-H102 )
- 4-port ( IP-H104 )



#### DVI-D

- 1-port ( IP-D101 )
- 2-port ( IP-D102 )
- 4-port ( IP-D104 )

### Package Content

- 1 x Mini IP KVM
- 1 x USB-C to USB-A 6ft power cable
- 1 x Mounting set

## < Part 2 > Setting

 Please make sure to follow the below steps to setup your KVM IP properly.

### < 2.1 > Login Mini IP KVM

#### Method 1 : Over a DHCP-enabled network ( factory default )

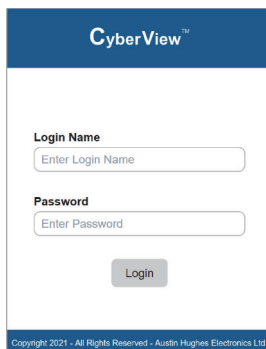
1. Connect a Cat 5e / 6 cable to the IP port of Mini IP KVM.
2. Connect the other end of the Cat 5e / 6 cable to your TCP/IP network.
3. Get the DHCP assigned IPv4 address from the DHCP server.
4. Open a web browser to enter the assigned IPv4 address to access the login page.

#### Method 2 : Via a connected computer NOT a DHCP server

1. Use a Cat 5e / 6 cable to connect the Mini IP KVM IP port and the computer
2. Default IP setting of Mini IP KVM will be assigned automatically.  
IP address : 192.168.0.1  
Subnet mask : 255.255.255.0  
Gateway : 192.168.0.254
3. Configure the IP setting of the computer as the same network of the Mini IP KVM
4. Open a web browser to enter the Mini IP KVM's IPv4 address to access the login page

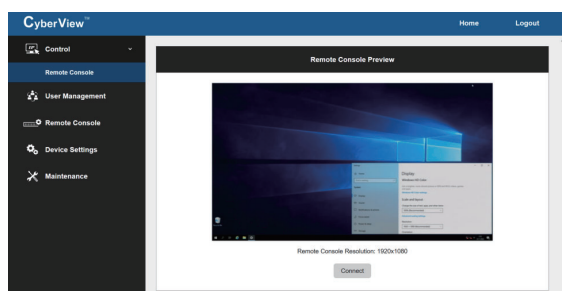
#### To log in to the Mini IP KVM do as follows:

1. Open a web browser to enter the Mini IP KVM's IPv4 address to access the login page



The image shows the CyberView login page. It has a blue header with the 'CyberView' logo. Below the header, there are two input fields: 'Login Name' and 'Password'. Each field has a placeholder text 'Enter Login Name' and 'Enter Password' respectively. Below these fields is a 'Login' button. At the bottom of the page, there is a small copyright notice: 'Copyright 2021 - All Rights Reserved - Austin Hughes Electronics Ltd.'

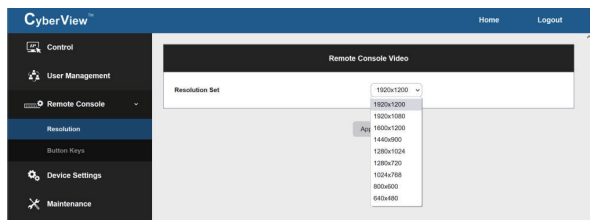
2. In login dialog box, enter the login name and password, then click **Login**, the default login name and password are **00000000**.
3. The Mini IP KVM GUI is displayed, and the navigation bar is on left-side.



## < 2.2 > Remote console resolution

The IP remote console displayed on the HTML5-based browser support multiple types of resolution, with a maximum of 1,920 x 1,200.

Click **Remote Console** and then **Resolution**, the Remote Console Video page is displayed, select the same resolution as target servers, click **Apply** to save the resolution.



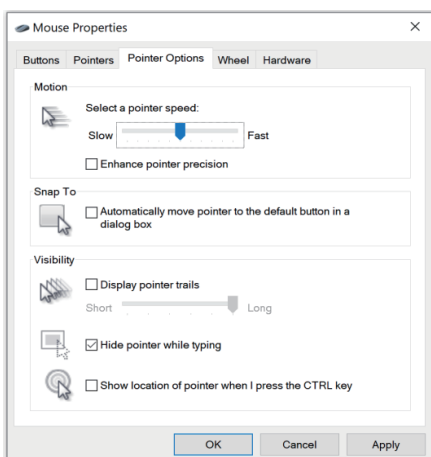
## < 2.3 > Directional Mouse

Change mouse mode to directional mouse, before use IP remote access, you need to turn off mouse acceleration & change display scaling to 100% for all connected target servers, Please refer to below for Windows operation system.

### Mouse setting

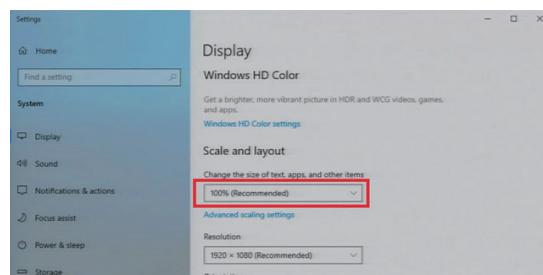
From the Control Panel, double-click the Mouse icon to open the Mouse Properties dialog box.

1. Move the pointer speed slider to the default of 50%. ( the middle of the slider or the sixth tick from the left ).
2. Uncheck “Enhance pointer precision” & “ Automatically move pointer to the default button in a dialog box” & “Display pointer trails”.
3. Windows enables mouse acceleration by default. Make sure you are logged in to windows to check mouse synchronization.
4. Mouse acceleration can only be turned off on a per Windows user basis. If you log in to Windows with a different user name, then you will have to configure mouse properties separately for that user as well.



### Change display scaling setting 100%

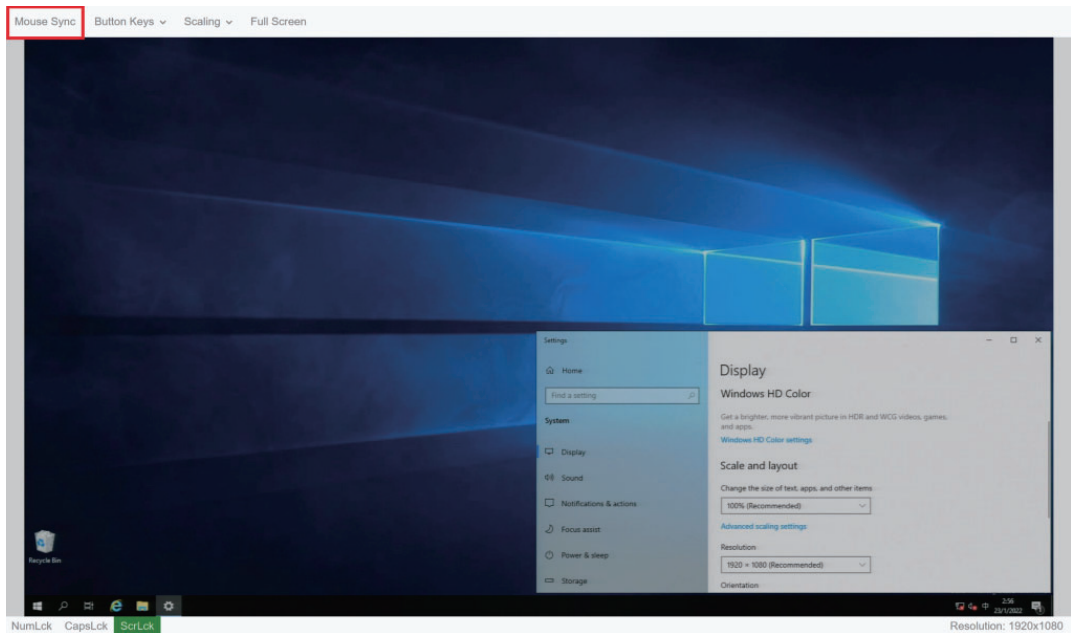
1. Open Settings.
2. Click on System.
3. Click on Display.
4. Under the “Scale and layout” section, select the scale 100%.



< 2.4 > Remote console hotkey

Click **Control** and then **Remote console**, the Remote console Preview is displayed, then Click **Connect**, the remote console opens in a separate windows.

When first start, the local mouse is not synchronized with the remote mouse, it appears at a distance to each other, press the **Mouse Sync** once ( positioning top left corner ), the mouse will align.



For 4-port & 2-port Mini IP KVM models

Hotkey	Function
Scroll Lock + Scroll Lock + ↑	Switch to previous port
Scroll Lock + Scroll Lock + ↓	Switch to next port
Scroll Lock + Scroll Lock + Port no.	Switch to specific port
Scroll Lock + Scroll Lock + S	Auto scan for powered on PC
Scroll Lock + Scroll Lock + B	* Enable / Disable beeper sound
Scroll Lock + Scroll Lock + G	# Enable USB Legacy mode
Scroll Lock + Scroll Lock + K	* Disable USB Legacy mode

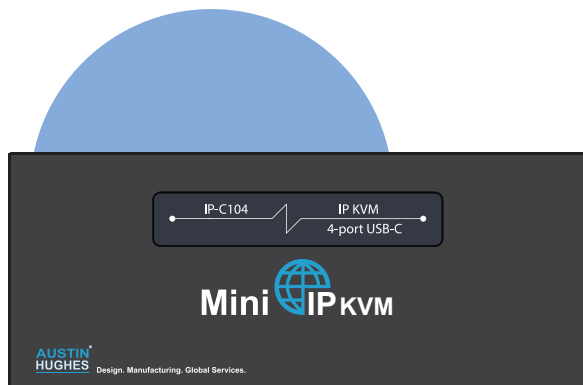
- Remarks:
- Example of “Scroll Lock + Scroll Lock + Port no.”
    - Port no. : 1 to 4 ( e.g. Port 4 : Scroll Lock + Scroll Lock + 4 )
  - You must press the hotkey within 2 seconds
  - A beep sound will be heard for successful entering

For 1-port Mini IP KVM models

Hotkey	Function
Scroll Lock + Scroll Lock + G	# Enable USB Legacy mode
Scroll Lock + Scroll Lock + K	* Disable USB Legacy mode

# Enable USB legacy mode to downgrade the 2 x USB 2.0 ports to USB 1.1  
\* Factory default

## < Part 3 > USB-C IP KVM



### Benefits

- IP remote access to PC(s) with USB-C connection
- 1-port, 2-port, 4-port models for selection
- OS Support : Mac / Windows / Linux
- Stylish mini size chassis for limited spacing environment
- Powerful quad-core processor for high quality video & image via IP
- Enterprise level IP authentication
- User-friendly HTML-base & Java-free remote access over IP
- Support BIOS access, no need to run OS on the connected PC(s)
- Hot pluggable, no software or drivers required
- 2 x USB hub port share peripheral devices among PC(s)

## < 3.1 > Specifications

IP Console	
Connector	1000 BaseT Gigabit Ethernet Port ( RJ45 )
User management	1 x active user, 15-user login
Network protocol	DHCP / BOOTP / DNS
Security	TLS 1.3, AES, LDAP, Active Directory (AD), HTTP(s)
Browser	Safari, Chrome, Firefox, Edge, etc.
Resolution ( max )	1920 x 1080 / 1920 x 1200 / 1600 x 1200

KVM Port	
Port number	1 / 2 / 4
Connector	USB-C ( Video + KB / MS )
Resolution ( max )	1920 x 1080 / 1920 x 1200 / 1600 x 1200

Local Console	
Video	1 x HDMI 1.4
Keyboard / Mouse	2 x USB-A
USB Hub 2.0	2 x USB-A
Resolution ( max )	1920 x 1080 / 1920 x 1200 / 1600 x 1200

Compatibility	
Hardware compatibility	Mac / HP / IBM / Dell PC, Server and Blade Server
OS support	Mac / Windows / Linux

Compliance	
EMC	FCC & CE
Safety	CE / LVD , UKCA & CB
Environment	RoHS3 & REACH

Environment	
Operating temp.	0 to 55°C degree
Storage temp.	-20 to 60°C degree
Operating humidity	20 to 90%, non-condensing
Storage humidity	5 to 90%, non-condensing
Operating altitude	16,000 ft
Non-operating altitude	40,000 ft
Shock	10G acceleration ( 11ms duration )
Vibration	5~500Hz 1G RMS random vibration

Power	
Input	USB-C
Consumption	11W / 5V@2.2A ( without peripherals )

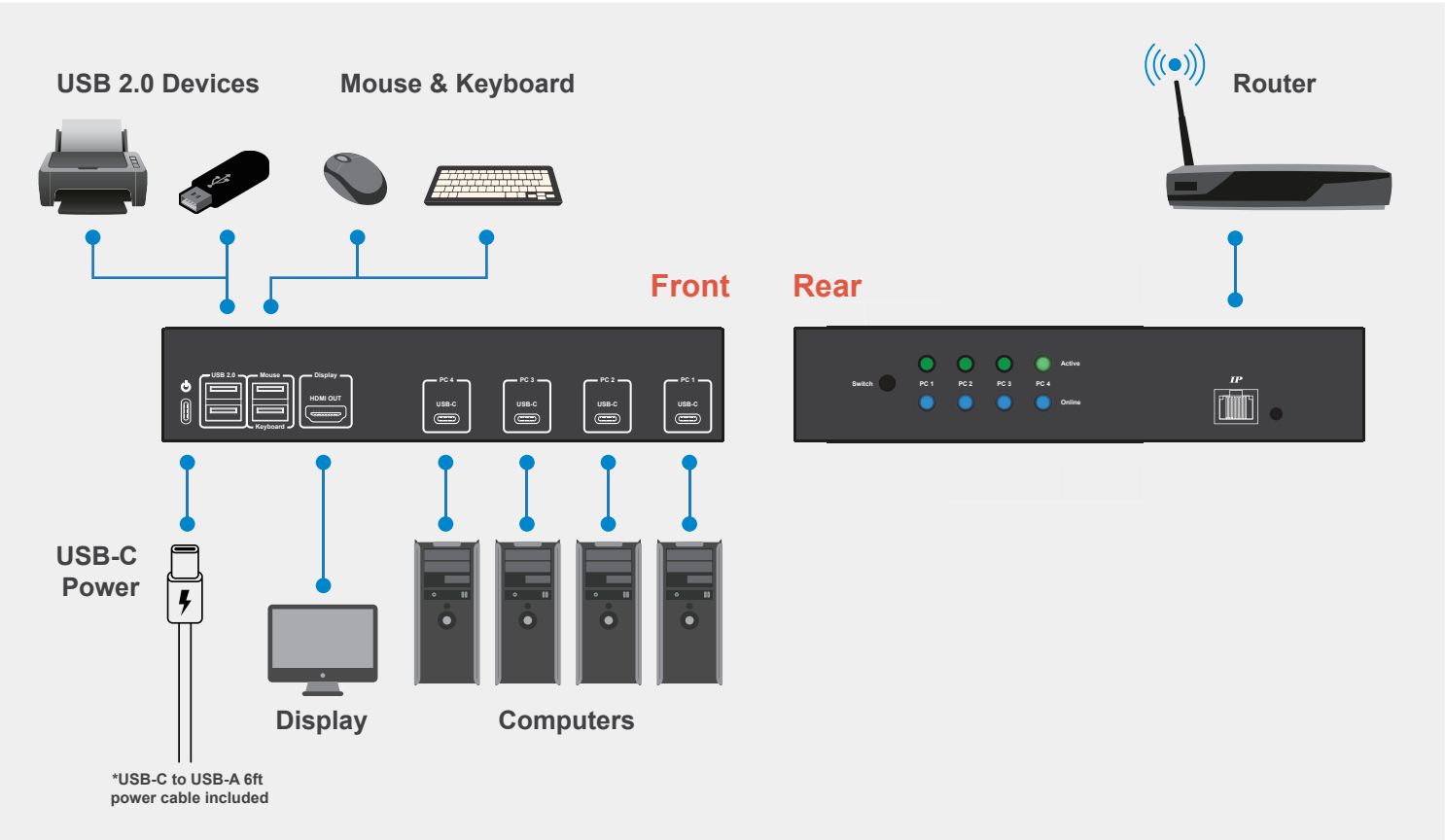
Physical		IP-C101	IP-C102	IP-C104
Product (W x D x H)		120 x 87 x 30 (mm) 4.72 x 3.43 x 1.18 (inch)	160 x 87 x 30 (mm) 6.30 x 3.43 x 1.18 (inch)	220 x 87 x 44 (mm) 8.66 x 3.43 x 1.73 (inch)
Packing (W x D x H)		358 x 257 x 55 mm 14.09 x 10.12 x 2.17 inch		
Weight	Net	0.445 kg / 0.981 lb	0.578 kg / 1.274 lb	0.712 kg / 1.569 lb
	Gross	0.745 kg / 1.642 lb	0.878 kg / 1.936 lb	1.212 kg / 2.672 lb
Chassis color		Dark		
Chassis materials		Steel		

< 3.2 > Design Overview

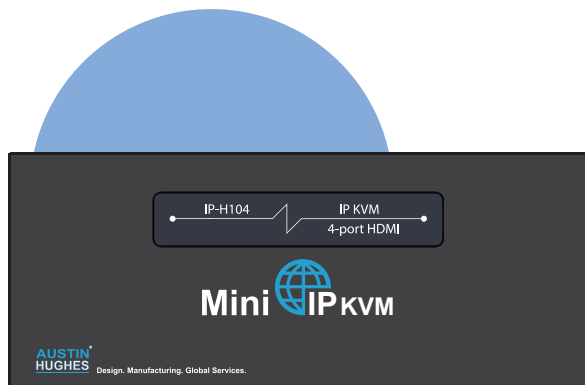


- 1 Power input
- 2 USB-A for USB 2.0 Devices
- 3 USB-A for Keyboard & Mouse
- 4 HDMI Output to Monitor
- 5 USB-C to Computers
- 6 PC Selection Switch ( 4-port model only )
- 7 LED Indicators ( 4-port model only )
- 8 1000 BaseT Gigabit Ethernet
- 9 Reset

< 3.3 > Connection Diagram



## < Part 4 > HDMI IP KVM



### Benefits

- IP remote access to PC(s) with HDMI connection
- 1-port, 2-port, 4-port models for selection
- OS Support : Mac / Windows / Linux
- Stylish mini size chassis for limited spacing environment
- Powerful quad-core processor for high quality video & image via IP
- Enterprise level IP authentication
- User-friendly HTML-base & Java-free remote access over IP
- Support BIOS access, no need to run OS on the connected PC(s)
- Hot pluggable, no software or drivers required
- 2 x USB hub port share peripheral devices among PC(s)

## < 4.1 > Specifications

IP Console	
Connector	1000 BaseT Gigabit Ethernet Port ( RJ45 )
User management	1 x active user, 15-user login
Network protocol	DHCP / BOOTP / DNS
Security	TLS 1.3, AES, LDAP, Active Directory (AD), HTTP(s)
Browser	Safari, Chrome, Firefox, Edge, etc.
Resolution ( max )	1920 x 1080 / 1920 x 1200 / 1600 x 1200

KVM Port	
Port number	1 / 2 / 4
Connector	HDMI 1.4 + USB-B ( Video + KB / MS )
Resolution ( max )	1920 x 1080 / 1920 x 1200 / 1600 x 1200

Local Console	
Video	1 x HDMI 1.4
Keyboard / Mouse	2 x USB-A
USB Hub 2.0	2 x USB-A
Resolution ( max )	1920 x 1080 / 1920 x 1200 / 1600 x 1200

Compatibility	
Hardware compatibility	Mac / HP / IBM / Dell PC, Server and Blade Server
OS support	Mac / Windows / Linux

Compliance	
EMC	FCC & CE
Safety	CE / LVD , UKCA & CB
Environment	RoHS3 & REACH

Environment	
Operating temp.	0 to 55°C degree
Storage temp.	-20 to 60°C degree
Operating humidity	20 to 90%, non-condensing
Storage humidity	5 to 90%, non-condensing
Operating altitude	16,000 ft
Non-operating altitude	40,000 ft
Shock	10G acceleration ( 11ms duration )
Vibration	5~500Hz 1G RMS random vibration

Power	
Input	USB-C
Consumption	11W / 5V@2.2A ( without peripherals )

Physical		IP-H101	IP-H102	IP-H104
Product (W x D x H)		160 x 87 x 30 (mm) 6.30 x 3.43 x 1.18 (inch)	220 x 87 x 30 (mm) 8.66 x 3.43 x 1.18 (inch)	220 x 87 x 44 (mm) 8.66 x 3.43 x 1.73 (inch)
Packing (W x D x H)		358 x 257 x 55 mm 14.09 x 10.12 x 2.17 inch		
Weight	Net	0.469 kg / 1.034 lb	0.609 kg / 1.343 lb	0.750 kg / 1.653 lb
	Gross	0.769 kg / 1.695 lb	0.909 kg / 2.005 lb	1.250 kg / 2.756 lb
Chassis color		Dark		
Chassis materials		Steel		

## < 4.2 > Design Overview

Top



1-port HDMI Input



2-port HDMI Input



4-port HDMI Input

Front

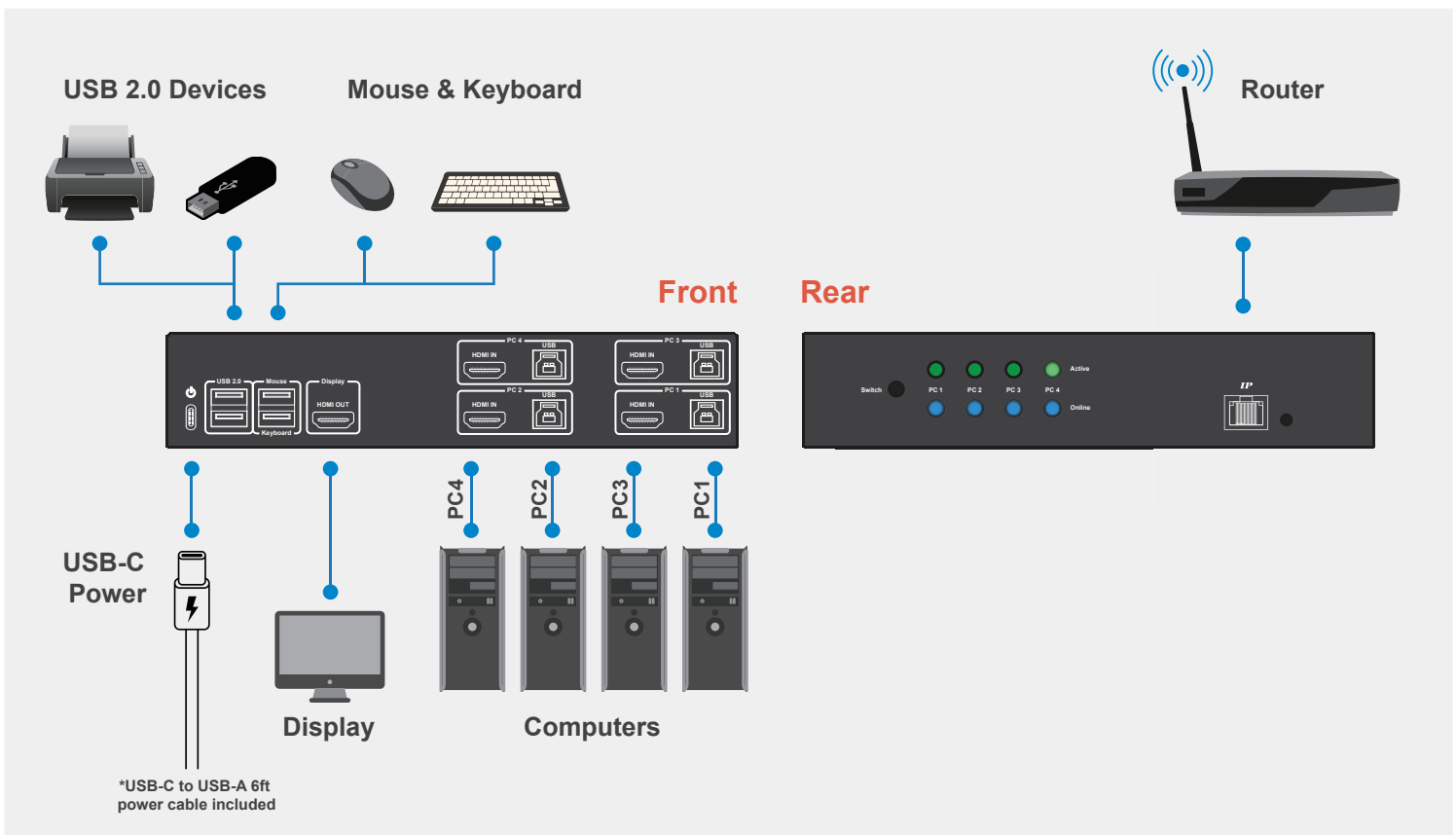


Rear

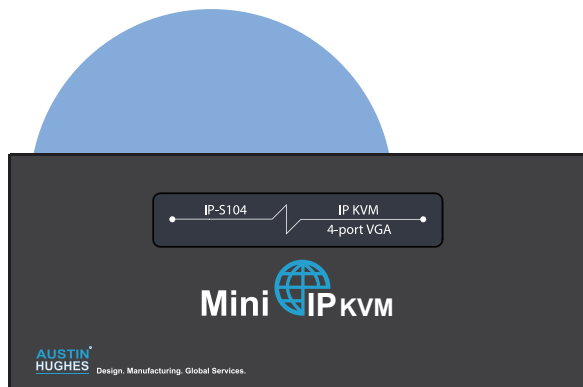


- 1 Power input
- 2 USB-A for USB 2.0 Devices
- 3 USB-A for Keyboard & Mouse
- 4 HDMI Output to Monitor
- 5 HDMI + USB-B to Computers
- 6 PC Selection Switch ( 4-port model only )
- 7 LED Indicators ( 4-port model only )
- 8 1000 BaseT Gigabit Ethernet
- 9 Reset

## < 4.3 > Connection Diagram



## < Part 5 > VGA IP KVM



### Benefits

- IP remote access to PC(s) with VGA connection
- 1-port, 2-port, 4-port models for selection
- OS Support : Mac / Windows / Linux
- Stylish mini size chassis for limited spacing environment
- Powerful quad-core processor for high quality video & image via IP
- Enterprise level IP authentication
- User-friendly HTML-base & Java-free remote access over IP
- Support BIOS access, no need to run OS on the connected PC(s)
- Hot pluggable, no software or drivers required
- 2 x USB hub port share peripheral devices among PC(s)

## < 5.1 > Specifications

IP Console	
Connector	1000 BaseT Gigabit Ethernet Port ( RJ45 )
User management	1 x active user, 15-user login
Network protocol	DHCP / BOOTP / DNS
Security	TLS 1.3, AES, LDAP, Active Directory (AD), HTTP(s)
Browser	Safari, Chrome, Firefox, Edge, etc.
Resolution ( max )	1920 x 1080 / 1920 x 1200 / 1600 x 1200

KVM Port	
Port number	1 / 2 / 4
Connector	VGA + USB-B ( Video + KB / MS )
Resolution ( max )	1920 x 1080 / 1920 x 1200 / 1600 x 1200

Local Console	
Video	1 x VGA
Keyboard / Mouse	2 x USB-A
USB Hub 2.0	2 x USB-A
Resolution ( max )	1920 x 1080 / 1920 x 1200 / 1600 x 1200

Compatibility	
Hardware compatibility	Mac / HP / IBM / Dell PC, Server and Blade Server
OS support	Mac / Windows / Linux

Compliance	
EMC	FCC & CE
Safety	CE / LVD , UKCA & CB
Environment	RoHS3 & REACH

Environment	
Operating temp.	0 to 55°C degree
Storage temp.	-20 to 60°C degree
Operating humidity	20 to 90%, non-condensing
Storage humidity	5 to 90%, non-condensing
Operating altitude	16,000 ft
Non-operating altitude	40,000 ft
Shock	10G acceleration ( 11ms duration )
Vibration	5~500Hz 1G RMS random vibration

Power	
Input	USB-C
Consumption	11W / 5V@2.2A ( without peripherals )

Physical		IP-S101	IP-S102	IP-S104
Product (W x D x H)		160 x 87 x 30 (mm) 6.30 x 3.43 x 1.18 (inch)	220 x 87 x 30 (mm) 8.66 x 3.43 x 1.18 (inch)	220 x 87 x 44 (mm) 8.66 x 3.43 x 1.73 (inch)
Packing (W x D x H)		358 x 257 x 55 mm 14.09 x 10.12 x 2.17 inch		
Weight	Net	0.472 kg / 1.04 lb	0.613 kg / 1.351 lb	0.754 kg / 1.662 lb
	Gross	0.772 kg / 1.702 lb	0.913 kg / 2.013 lb	1.254 kg / 2.765 lb
Chassis color		Dark		
Chassis materials		Steel		

## < 5.2 > Design Overview

Top



1-port VGA Input

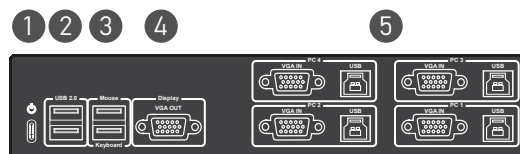
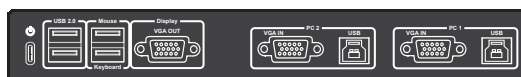
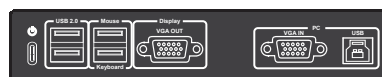


2-port VGA Input



4-port VGA Input

Front

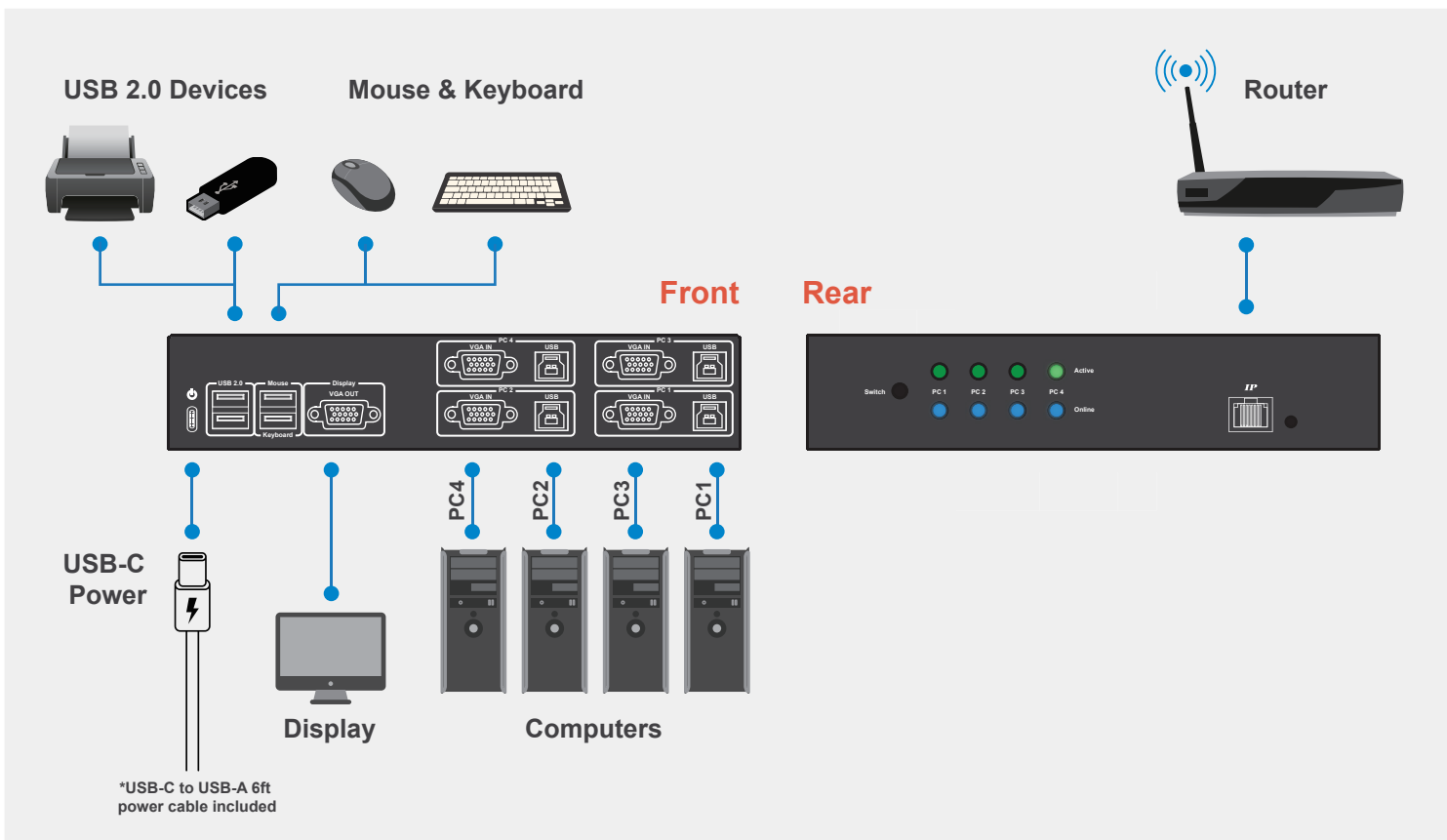


Rear

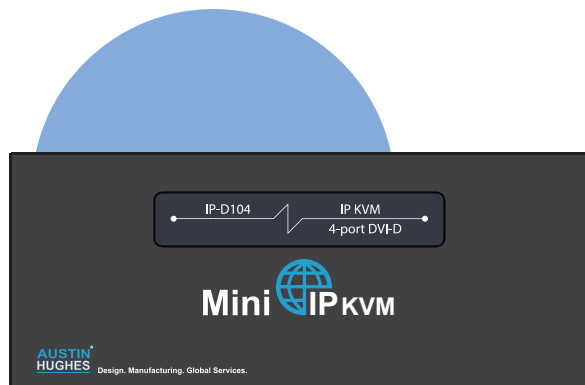


- 1 Power input
- 2 USB-A for USB 2.0 Devices
- 3 USB-A for Keyboard & Mouse
- 4 VGA Output to Monitor
- 5 VGA + USB-B to Computers
- 6 PC Selection Switch ( 4-port model only )
- 7 LED Indicators ( 4-port model only )
- 8 1000 BaseT Gigabit Ethernet
- 9 Reset

## < 5.3 > Connection Diagram



## < Part 6 > DVI-D IP KVM



### Benefits

- IP remote access to PC(s) with DVI-D connection
- 1-port, 2-port, 4-port models for selection
- OS Support : Mac / Windows / Linux
- Stylish mini size chassis for limited spacing environment
- Powerful quad-core processor for high quality video & image via IP
- Enterprise level IP authentication
- User-friendly HTML-base & Java-free remote access over IP
- Support BIOS access, no need to run OS on the connected PC(s)
- Hot pluggable, no software or drivers required
- 2 x USB hub port share peripheral devices among PC(s)

## < 6.1 > Specifications

IP Console	
Connector	1000 BaseT Gigabit Ethernet Port ( RJ45 )
User management	1 x active user, 15-user login
Network protocol	DHCP / BOOTP / DNS
Security	TLS 1.3, AES, LDAP, Active Directory (AD), HTTP(s)
Browser	Safari, Chrome, Firefox, Edge, etc.
Resolution ( max )	1920 x 1080 / 1920 x 1200 / 1600 x 1200

KVM Port	
Port number	1 / 2 / 4
Connector	DVI-D + USB-B ( Video + KB / MS )
Resolution ( max )	1920 x 1080 / 1920 x 1200 / 1600 x 1200

Local Console	
Video	1 x DVI-D
Keyboard / Mouse	2 x USB-A
USB Hub 2.0	2 x USB-A
Resolution ( max )	1920 x 1080 / 1920 x 1200 / 1600 x 1200

Compatibility	
Hardware compatibility	Mac / HP / IBM / Dell PC, Server and Blade Server
OS support	Mac / Windows / Linux

Compliance	
EMC	FCC & CE
Safety	CE / LVD , UKCA & CB
Environment	RoHS3 & REACH

Environment	
Operating temp.	0 to 55°C degree
Storage temp.	-20 to 60°C degree
Operating humidity	20 to 90%, non-condensing
Storage humidity	5 to 90%, non-condensing
Operating altitude	16,000 ft
Non-operating altitude	40,000 ft
Shock	10G acceleration ( 11ms duration )
Vibration	5~500Hz 1G RMS random vibration

Power	
Input	USB-C
Consumption	11W / 5V@2.2A ( without peripherals )

Physical		IP-D101	IP-D102	IP-D104
Product (W x D x H)		160 x 87 x 30 (mm) 6.30 x 3.43 x 1.18 (inch)	220 x 87 x 30 (mm) 8.66 x 3.43 x 1.18 (inch)	220 x 87 x 44 (mm) 8.66 x 3.43 x 1.73 (inch)
Packing (W x D x H)		358 x 257 x 55 mm 14.09 x 10.12 x 2.17 inch		
Weight	Net	0.480 kg / 1.058 lb	0.623 kg / 1.373 lb	0.767 kg / 1.690 lb
	Gross	0.780 kg / 1.719 lb	0.923 kg / 2.034 lb	1.267 kg / 2.793 lb
Chassis color		Dark		
Chassis materials		Steel		

## < 6.2 > Design Overview

Top



1-port DVI-D Input

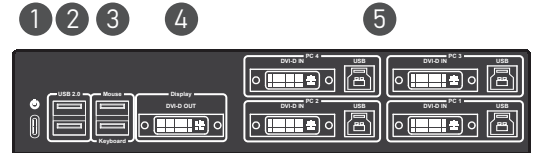
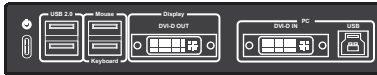


2-port DVI-D Input



4-port DVI-D Input

Front

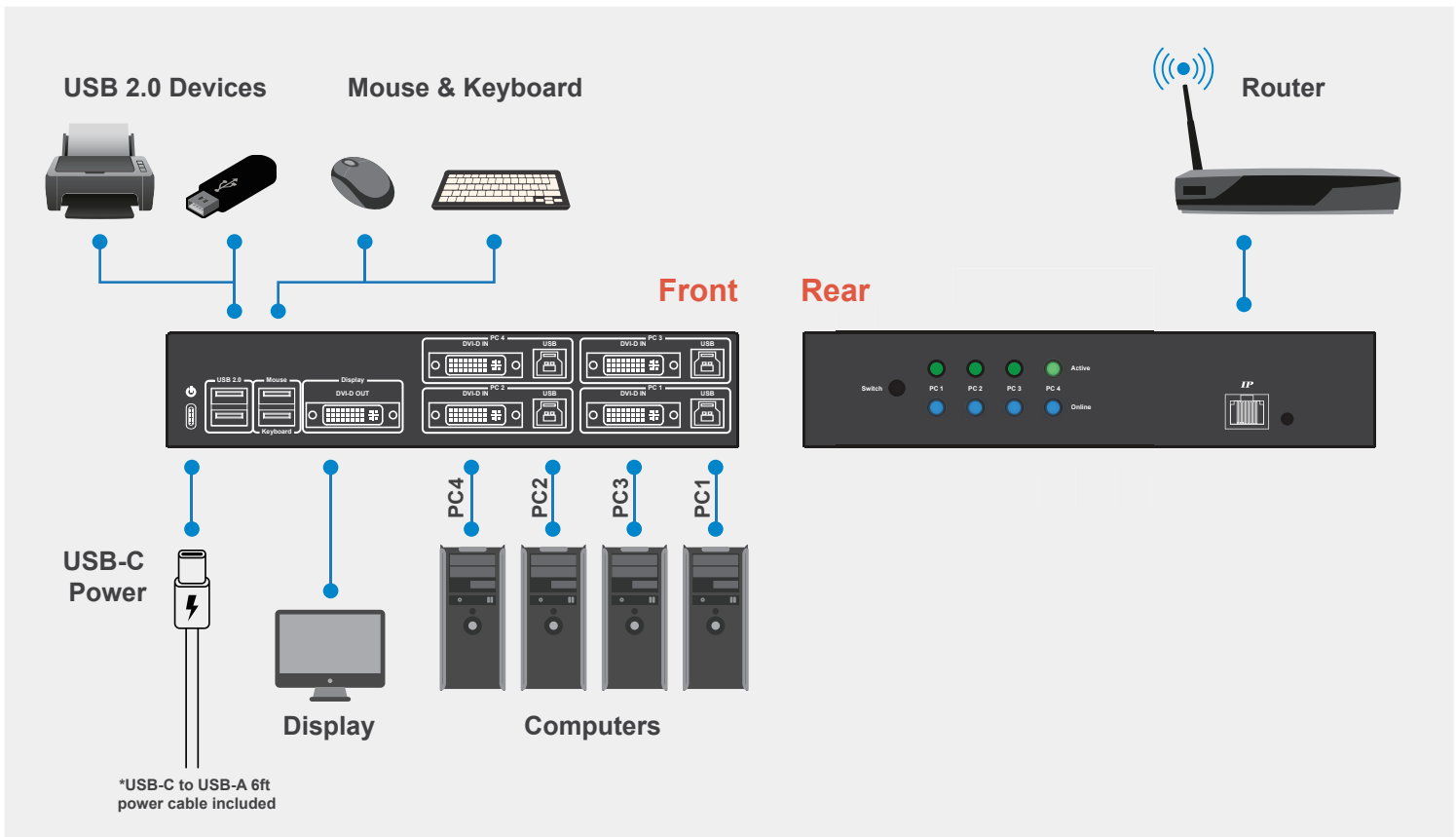


Rear



- |  |                               |   |
|--|-------------------------------|---|
| 1 Power input                          | 2 USB-A for USB 2.0 Devices   | 3 USB-A for Keyboard & Mouse                |
| 4 DVI-D Output to Monitor              | 5 DVI-D + USB-B to Computers  | 6 PC Selection Switch ( 4-port model only ) |
| 7 LED Indicators ( 4-port model only ) | 8 1000 BaseT Gigabit Ethernet | 9 Reset                                     |

## < 6.3 > Connection Diagram



The company reserves the right to modify product specifications without prior notice and assumes no responsibility for any error which may appear in this publication.

All brand names, logo and registered trademarks are properties of their respective owners.

Copyright 2025 Austin Hughes Electronics Ltd. All rights reserved.