

unit : inch



| Chassis Color | Code     |
|---------------|----------|
| Black         | <b>1</b> |
| White         | <b>2</b> |
| Red           | <b>3</b> |
| Blue          | <b>4</b> |
| Green         | <b>5</b> |
| Orange        | <b>6</b> |
| Yellow        | <b>7</b> |
| Purple        | <b>8</b> |

Standard color: Black

| 30A model | V16US-30A-MD/CR_530/3B-1  | MD PDU Local metered | 30A Inlet NEMA 5-30P            | Circuit A : 12A max., US #1-8<br>Circuit B : 12A max., US #9-16 |
|-----------|---------------------------|----------------------|---------------------------------|---|
|           | V16US-30A- CR_530/3B-1    | Basic PDU            | 10ft Cordset<br>3W 10AWG UL SJT |   |
| 30A model | V16US-30A-MD/CR_L530/3B-1 | MD PDU Local metered | 30A Inlet NEMA L5-30P           | Circuit A : 12A max., US #1-8<br>Circuit B : 12A max., US #9-16 |
|           | V16US-30A- CR_L530/3B-1   | Basic PDU            | 10ft Cordset<br>3W 10AWG UL SJT |   |
| 20A model | V16US-20A-MD/CR_520/3B-1  | MD PDU Local metered | 20A Inlet NEMA 5-20P            | Circuit : 16A max., US #1-16                                    |
|           | V16US-20A- CR_520/3B-1    | Basic PDU            | 10ft Cordset<br>3W 12AWG UL SJT |   |
| 20A model | V16US-20A-MD/CR_L520/3B-1 | MD PDU Local metered | 20A Inlet NEMA L5-20P           | Circuit : 16A max., US #1-16                                    |
|           | V16US-20A- CR_L520/3B-1   | Basic PDU            | 10ft Cordset<br>3W 12AWG UL SJT |   |
| 15A model | V16US-15A-MD/CR_515/3B-1  | MD PDU Local metered | 15A Inlet NEMA 5-15P            | Circuit : 12A max., US #1-16                                    |
|           | V16US-15A- CR_515/3B-1    | Basic PDU            | 10ft Cordset<br>3W 14AWG UL SJT |   |

Remarks : To comply with US LISTED / National Electrical Code, the circuit Amp has been de-rated to 80% of the original.



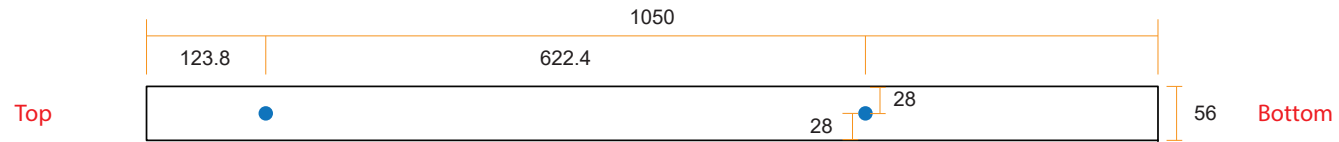
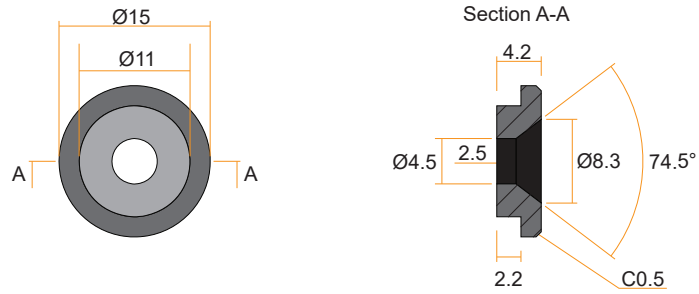
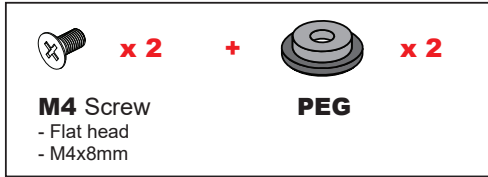
| Specification                |                               |
|------------------------------|-------------------------------|
| Operating Temperature        | : -5 to 60 °C                 |
| Storage Temperature          | : -25 to 65 °C                |
| Operating Altitude           | : 0 to 2,000 m                |
| Storage Altitude             | : 0 to 15,000 m               |
| Humidity (non-condensing)    | : 8 to 95% RH                 |
| Chassis Material / Color     | : Steel / Black               |
| Product Dimension            | : 2.2W x 2.2D x 41.3H (inch)  |
| Packing Dimension ( 2-in-1 ) | : 4.3W x 10.6D x 54.8H (inch) |
| Net / Gross Weight           | : 10.46 lb / 12.88 lb         |

| Meter Features   | MD PDU | Basic PDU |
|--|--------|-----------|
|  |        |           |
| Local Display : 3-digit LED ammeter measuring input load current | ✓      | ✗         |
| Measurement : Current ( A )                                      | ✓      | ✗         |
| Accuracy : ± ( 3% of the reading + 5 digits ) RMS                | ✓      | ✗         |

| Safety Certificates  |   |
|----------------------|---|
| CB                   | : IEC 62368-1:2018                                  |
| UL-US                | : UL 62368-1, 3rd Ed, 2021-10-22                    |
| UL-CA                | : CAN/ CSA C22.2 No. 62368-1:19, 3rd Ed, 2021-10-22 |
| EMC Certificates     |   |
| FCC                  | : FCC 47 CFR Part 15 Subpart B                      |
| Environment          |   |
| : RoHS, Reach & WEEE |   |

# Mounting kit & Diagram

## VMS Mounting Button



Unit : mm  
1 inch = 25.4 mm

## VMB Mounting Bracket

