

Z IP In-line Meter

3-Phase 400V / 208V

1-Phase 230V / 208V / 110V



Smoother. Smarter. Superior.

While basic PDUs remain common in today's data centers, real-time power monitoring has become an essential requirement.

To negate the need for purchasing new intelligent PDUs and slash the labor costs associated with de-installing and re-cabling, the InfraPower Z IP In-line Meter is the most effective enhancement approach for a smoother upgrade of your basic PDUs with both local monitoring and remote management.

IP ACCESS - High Availability.

- Z IP In-line Meter model with embedded dual Gigabit ethernet LAN IP for redundant network access via IP
- Enterprise IP Authentication, LDAPv3 / LDAPS, Active Directory®, RADIUS, 802.1x, or local credential database.

Protocol - Natively Compatible with DCIM

- SNMP V2 V3, Web GUI, Modbus/TCP, RestAPI, etc

METERING - Precise Intelligence.

- Z iMeters provide real-time local & remote power management
- Billing grade meter accuracy within +/- 0.5%

LINKING - Cost Saving Efficiency.

- Z IP In-line Meter provide daisy chain functionality
- Via one single Z IP In-line Meter up to 32 iMeter levels can be accessed via single network IP

Single Feed or Dual Feed

- Single Feed In-line meter simply connects between a basic PDU and the power source. It eliminates the need to replace existing rack PDUs, dramatically reducing project implementation time.
- Dual Feed In-line meter provides metering capabilities for two basic PDUs within the same rack. Users benefit from further network efficiency, as both PDUs can be monitored remotely via a single IP address.

Vertical or Horizontal

- For ultimate convenience during local monitoring, the sophisticated 2.8" touchscreen display can be rotated and configured for either a vertical or horizontal layout.

Sophisticated 2.8" Touchscreen Display

- The sharp, highly visible 2.8" color touchscreen LCD displays crucial local data for the entire PDU, including current (Amp), voltage (Volt), power (kW), power factor, and energy consumption (kWh). All data is captured with a billing-grade accuracy of within +/- 0.5%.

Field-Replaceable

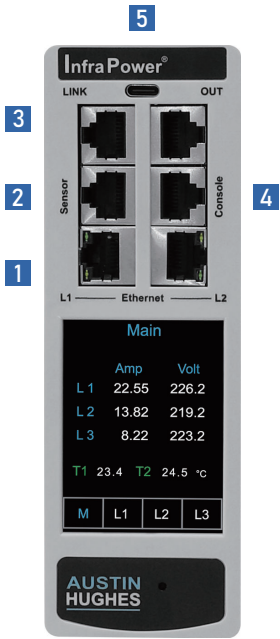
- Engineered for zero downtime. Both the Z iMeter and the DC power modules are field-replaceable, allowing you to swap components without powering down the PDU or interrupting mission-critical equipment.

Remote PDU Monitoring

InfraPower provides a choice of three flexible remote monitoring solutions:

- Free IPM-04 management software (supports up to 1600 In-line meters)
- Web-based GUI
- Seamless integration with third-party DCIM/ BMS platforms

New Generation Z IP Meter



- 1 Embedded dual LAN IP
- 2 Sensor port x 1
- support single or daisy chain sensors (up to 4)
- 3 LINK & OUT cascading ports
- up to 32 levels of iMeter
- 4 Console port x 1
- iMeter configuration
- 5 USB-C function port x 1
- WIFI
- firmware update
- backup power for meter against power failure
- * The latest Z PDU controller, powered by ARM9 CPU (Microchip AT91SAM9G25)

2.8" Touchscreen Color Display

The sharp & highly visible display of 2.8" touchscreen LCD provides local data of:

- Energy Consumption (kWh)
- Power (KW)
- Power Factor
- Current (Amp)
- Voltage (V)
- Temperature & Humidity

Billing Grade Meter Accuracy

The +/- 0.5% accuracy of the InfraPower PDU meter is vital for billing accuracy, energy efficiency, capacity planning and performance monitoring.

Field Replaceable Design

Meter

The field-replaceable Z In-line Meter features a 2.8" color LCD display with touchscreen functionality. Its hot-swappable design helps eliminate maintenance downtime, allowing you to easily replace a potentially defective meter without any service interruption.

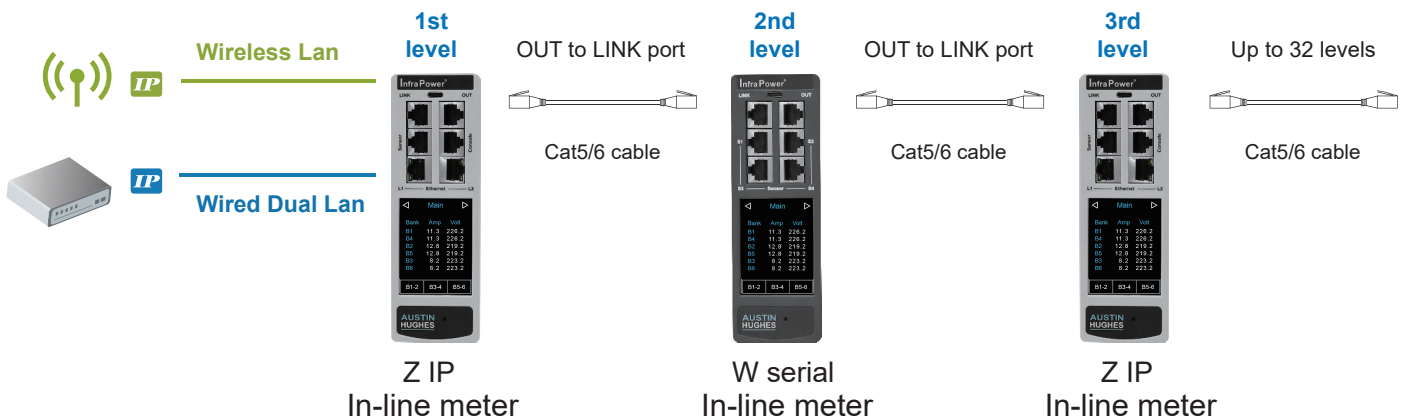
DC Module

Given the mission-critical nature of the environment, the Z In-line Meter is designed and built to provide extremely high levels of resiliency. Field-replaceable DC power modules are used within the intelligent PDU models to avoid unnecessary downtime.



In-line Meter Cascade

The InfraPower Rack IP In-line Meter provides connection ports for daisy-chaining. A single Z IP In-line Meter can connect up to 31 expansion in-line meters (both 1-phase and 3-phase). This means only one network IP address—configured via the primary Z IP In-line Meter—is required to manage all 32 levels of in-line meters. Expansion units can be either Z IP or W serial in-line meters (Serial meter models available upon request).



Single Feed Inline Meter



110V model	Female Outlet	Cordset	Male Inlet	Cordset
EW-30A_L530	NEMA L5-30R	10AWG UL	NEMA L5-30P	10AWG UL
EW-30A_530	NEMA 5-30R	10AWG UL	NEMA 5-30P	10AWG UL

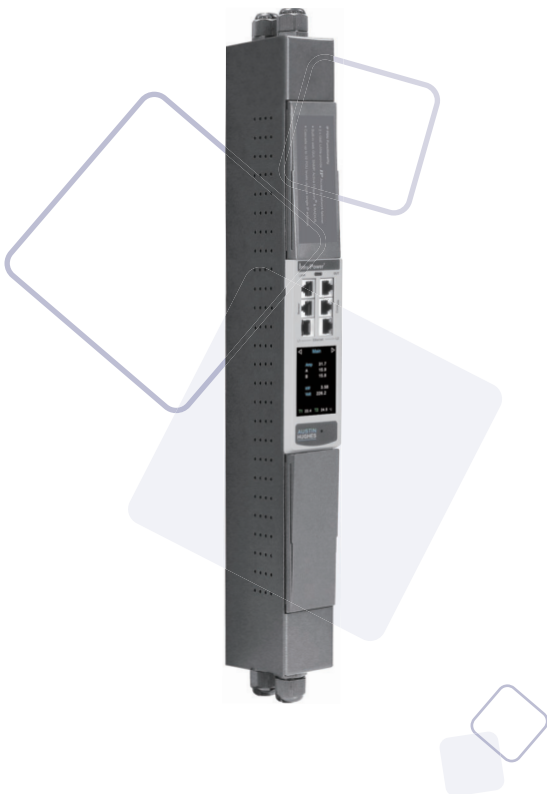
110V model	Female Outlet	Cordset	Male Inlet	Cordset
EW-20A_L520	NEMA L5-20R	12AWG UL	NEMA L5-20P	12AWG UL
EW-20A_520	NEMA 5-20R	12AWG UL	NEMA 5-20P	12AWG UL

110V model	Female Outlet	Cordset	Male Inlet	Cordset
EW-15A_515	NEMA 5-15R	14AWG UL	NEMA 5-15P	14AWG UL

208V model	Female Outlet	Cordset	Male Inlet	Cordset
EW-30A_L630	30A NEMA L6-30C	10AWG UL	30A NEMA L6-30P	10AWG UL
EW-20A_L620	20A NEMA 6-20C	12AWG UL	20A NEMA L6-20P	12AWG UL

230V model	Female Outlet	Cordset	Male Inlet	Cordset
EW-63A_EN	63A IEC 60309 2P+E	10.0mm sq. H05V V-F	63A IEC 60309 2P+E	10.0mm sq. H05V V-F
EW-32A_EN	32A IEC 60309 2P+E	4.0mm sq. H05V V-F	32A IEC 60309 2P+E	4.0mm sq. H05V V-F
EW-16A_EN	16A IEC 60309 2P+E	1.5mm sq. H05V V-F	16A IEC 60309 2P+E	1.5mm sq. H05V V-F

Dual Feed Inline Meter



110V model	Female Outlet x 2	Cordset x 2	Male Inlet x 2	Cordset x 2
DEW-30A_L530	NEMA L5-30R	10AWG UL	NEMA L5-30P	10AWG UL
DEW-30A_530	NEMA 5-30R	10AWG UL	NEMA 5-30P	10AWG UL

110V model	Female Outlet x 2	Cordset x 2	Male Inlet x 2	Cordset x 2
DEW-20A_L520	NEMA L5-20R	12AWG UL	NEMA L5-20P	12AWG UL
DEW-20A_520	NEMA 5-20R	12AWG UL	NEMA 5-20P	12AWG UL

110V model	Female Outlet x 2	Cordset x 2	Male Inlet x 2	Cordset x 2
DEW-15A_515	NEMA 5-15R	14AWG UL	NEMA 5-15P	14AWG UL

208V model	Female Outlet x 2	Cordset x 2	Male Inlet x 2	Cordset x 2
DEW-30A_L630	30A NEMA L6-30C	10AWG UL	30A NEMA L6-30P	10AWG UL
DEW-20A_L620	20A NEMA 6-20C	12AWG UL	20A NEMA L6-20P	12AWG UL

230V model	Female Outlet x 2	Cordset x 2	Male Inlet x 2	Cordset x 2
DEW-63A_EN	63A IEC 60309 2P+E	10.0mm sq. H05V V-F	63A IEC 60309 2P+E	10.0mm sq. H05V V-F
DEW-32A_EN	32A IEC 60309 2P+E	4.0mm sq. H05V V-F	32A IEC 60309 2P+E	4.0mm sq. H05V V-F
DEW-16A_EN	16A IEC 60309 2P+E	1.5mm sq. H05V V-F	16A IEC 60309 2P+E	1.5mm sq. H05V V-F

Single Feed Inline Meter

208V model	Female Outlet	Cordset	Male Inlet	Cordset
PW-60A_EN	60A IEC 60309 3P+E	6AWG UL	60A IEC 60309 3P+E	6AWG UL
PW-50A_CS8365C	50A CS8364	6AWG UL	50A CS8365	6AWG UL
PW-30A_L2130	30A NEMA L21-30C	10AWG UL	30A NEMA L21-30P	10AWG UL
PW-20A_L2120	20A NEMA L21-20C	12AWG UL	20A NEMA L21-20P	12AWG UL
PW-30A_L1530	30A NEMA L15-30C	10AWG UL	30A NEMA L15-30P	10AWG UL
PW-20A_L1520	20A NEMA L15-20C	12AWG UL	20A NEMA L15-20P	12AWG UL

400V model	Female Outlet	Cordset	Male Inlet	Cordset
PW-63A_EN	63A IEC 60309 3P+N+E	10.0mm sq. H05V V-F	63A IEC 60309 3P+N+E	10.0mm sq. H05V V-F
PW-32A_EN	32A IEC 60309 3P+N+E	4.0mm sq. H05V V-F	32A IEC 60309 3P+N+E	4.0mm sq. H05V V-F
PW-16A_EN	16A IEC 60309 3P+N+E	1.5mm sq. H05V V-F	16A IEC 60309 3P+N+E	1.5mm sq. H05V V-F



Dual Feed Inline Meter

208V model	Female Outlet x 2	Cordset x 2	Male Inlet x 2	Cordset x 2
DPW-30A_L2130	30A NEMA L21-30C	10AWG UL	30A NEMA L21-30P	10AWG UL
DPW-20A_L2120	20A NEMA L21-20C	12AWG UL	20A NEMA L21-20P	12AWG UL
DPW-30A_L1530	30A NEMA L15-30C	10AWG UL	30A NEMA L15-30P	10AWG UL
DPW-20A_L1520	20A NEMA L15-20C	12AWG UL	20A NEMA L15-20P	12AWG UL

400V model	Female Outlet x 2	Cordset x 2	Male Inlet x 2	Cordset x 2
DPW-32A_EN	32A IEC 60309 3P+N+E	4.0mm sq. H05V V-F	32A IEC 60309 3P+N+E	4.0mm sq. H05V V-F
DPW-16A_EN	16A IEC 60309 3P+N+E	1.5mm sq. H05V V-F	16A IEC 60309 3P+N+E	1.5mm sq. H05V V-F



208V model	Female Outlet x 2	Cordset x 2	Male Inlet x 2	Cordset x 2
DPW-60A_EN5p	60A IEC 60309 3P+N+E	6AWG UL	60A IEC 60309 3P+N+E	6AWG UL
DPW-60A_EN4p	60A IEC 60309 3P+E	6AWG UL	60A IEC 60309 3P+E	6AWG UL
DPW-50A_CS8365C	50A CS8364	6AWG UL	50A CS8365	6AWG UL

400V model	Female Outlet x 2	Cordset x 2	Male Inlet x 2	Cordset x 2
DPW-63A_EN	63A IEC 60309 3P+N+E	10.0mm sq. H05V V-F	63A IEC 60309 3P+N+E	10.0mm sq. H05V V-F



Software.

PDU management software helps reducing manpower and hence improving uptime and productivity. It also benefits users with capacity planning and increasing the overall efficiency of the data center. Similar to the InfraPower Z-series iPDU, the Z In-line Meter offers three remote management solutions for users to choose from.

1. Free Management Software IPM-04

Free IPM-04 management software offers instantaneous visibility into crucial power quality, energy efficiency, and equipment health. By employing the most comprehensive and precise power management, you can effectively handle energy optimization, capacity planning, remote PDU monitoring, environmental optimization, troubleshooting and maintenance with confidence.

Capacity

- 50 x iMeter Group Support (Just 1 IP for 32 iMeter levels)
- 1600 x iMeter Support
- 5 x Concurrent User

Power Quality Measurements (kWh, kW, kVA, Power Factor, Amp)

- Inlet Power Monitoring

Alarming

- Rising Threshold & Alert
- Overload Threshold & Alert

Environmental Monitoring

- Temperature (°C / °F)
- Humidity (%)
- Smoke Detection
- Door Open / Close Detection

Reporting

- PDU log
- Sensor log
- Event log

2. Web Based GUI PPS-04-S

A web-based GUI is integrated with Z IP In-line meter or external IP dongle (IPD-03-S). It is ideal for users who simply require the power monitoring under a single In-line meter daisy chain (up to 32 iMeter level) without software installation.

3. DCIM

Z series IP In-line meter & IP Dongle are natively compatible with DCIM or some other 3rd party management systems. Protocols include SNMP V2 V3, Web GUI, Modbus/TCP, RestAPI, etc.

Accessories

A range of accessories and peripherals designed to enhance the functionality of Z IP In-line Meters.

Z-TH2



Cascade Temp & Humid Sensor

- Up to 4 sensors in daisy chain
- High accuracy: +/- 2% for temp & humidity
- Low profile design with magnetic base for easy affixing to the rack
- Plug & play

Z-TH01-2M / 4M Z-T01-2M / 4M



Temp & Humid / Temp Sensor

- Low profile design with magnetic base for easy affixing to the rack
- Plug & play
- 2M or 4M cord

Z-S01-1M / 3M



Smoke Sensor

- Once smoke alarm triggered, red LED lights on with continuous beep sound
- 1M or 3M cord

Z-W01-3M



Water Sensor

- Fluid leakage detection
- 5M rope round the rack bottom to detect any fluid flowing to the rack area
- IP65 cable joint connectors provided
- 3M cord

Z-DSW



Mechanical Door Sensor (Pair)

- Low cost / precise
- Cost efficient integration to new rack
- Size (52 x 22.5 x 30.75 mm)
- 2M cord
- Connect directly to handles

Z-DIR



IR Door Sensor (Pair)

- Light weight with magnetic base
- No custom cutting required on doors
- Mini size (33 x 19 x 7 mm)
- 2M cord
- Connect directly to handles

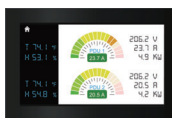
IPD-WIFI



WIFI Kit

- WIFI kit with 1M cord
- 802.11 g/n/ac WiFi
- Low-profile design wireless athena
- Magnetic base design for tool-less affix

IP-ED-01



4.3" Door Mount Display Panel

- 1 smart display panel support 2 iMeters
- Viewable while doors in closed position
- Resistive touchscreen
- Displays power, temp., humid., water leakage, smoke or door status
- Alarm & log

Founded in 1995, Austin Hughes is a design and manufacturing group that offers a broad range of solutions based around 19-inch rack mount technology. These solutions include UltraRack IT server rack, InfraRack smart rack, InfraPower rack PDU, ATS & In-line meter, InfraCool rack cooling systems, InfraGuard rack sensors and peripherals, InfraSolution rack access control and CyberView rack LCD KVM switches. We also offer industrial & commercial IT products, such as UltraView professional displays and Mini IP solutions.

Austin Hughes has ISO14001 and ISO9001 approved design, manufacturing, assembly, and test facilities. We support a worldwide customer base through our global locations.



As a leading global IT manufacturer, Austin Hughes provides TAA-compliant data center solutions, manufactures and assembles products in strategic TAA-certified locations.



Rack Power Expert



Professional Distribution Partner



Americas

Austin Hughes Solutions Inc.
21375 Cabot Blvd
Hayward, CA 94545
United States

inquiry-americas@austin-hughes.com

EMEA

Austin Hughes Europe Ltd.
Unit 1, Chancery Gate Business Centre
Manor House Avenue
Southampton, SO15 0AE
United Kingdom

inquiry-emea@austin-hughes.com

APAC

Austin Hughes Electronics Ltd.
Unit 3608-12, Cable TV Tower
9 Hoi Shing Road, Tsuen Wan
Hong Kong

inquiry-apac@austin-hughes.com

ASEAN

Austin Hughes Pte. Ltd.
1 Bukit Batok Crescent,
#04-27 WCEGA Plaza,
Singapore 658064

inquiry-asean@austin-hughes.com

Austin Hughes has an extensive distribution network, including the Americas, EMEA, APAC & ASEAN
Contact your nearest sales office for details of local representation

Please ask for details of other products from Austin Hughes. Every effort has been made to ensure that the information contained herein is correct. There is a possibility that the image(s) shown may not be exactly the same as the final product. The company reserves the right to modify product specifications without prior notice and assumes no responsibility for any error which may appear in this publication.

All brand names, logo and registered trademarks are properties of their respective owners.
Copyright 2026 Austin Hughes Electronics Ltd. All rights reserved.

Distributed by:

Distributor by country on application